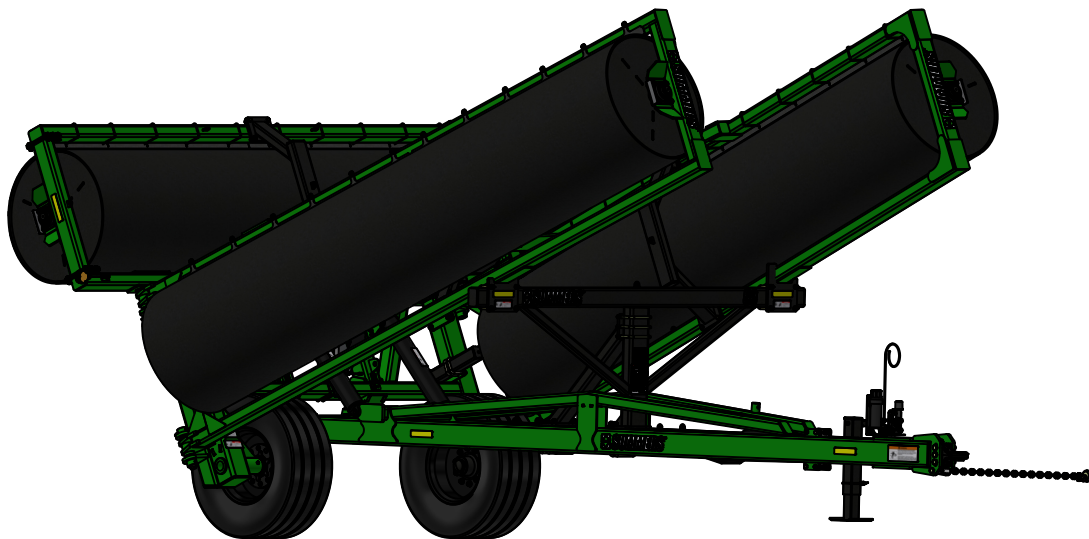


# **SUMMERS<sup>®</sup>**

## **OPERATOR'S MANUAL**

### **WING FOLD LAND ROLLER**



The Operator Is Responsible For Adjusting The Machine For Proper Performance And/Or Function. Machine Does Not Come "Field Ready" From The Factory.

#### **NOTICE**

Read And Understand Operator's Manual Before Using Machine.



### **SUMMERS MANUFACTURING CO., INC.**

[www.summersmfg.com](http://www.summersmfg.com)

DEVILS LAKE, NORTH DAKOTA 58301

(701) 662-5391

WING FOLD  
LAND ROLLER

WING FOLD  
LAND ROLLER



# TABLE OF CONTENTS

---

<b>WARRANTY .....</b>	<b>4</b>
<b>GENERAL INFORMATION .....</b>	<b>5</b>
OPERATOR ORIENTATION.....	6
SAFETY.....	8
SAFETY GENERAL.....	9
SAFETY DECALS.....	11-13
DECAL LOCATON.....	17
<b>OPERATION AND MAINTENANCE .....</b>	<b>18-22</b>
CONNECTING TO THE TRACTOR.....	19
PREPARING FOR FIELD OPERATION .....	20
FIELD OPERATION.....	21
TRANSPORT.....	21-22
DISCONNECTING FROM THE TRACTOR .....	22
STORAGE .....	22
MAINTENANCE.....	22
TROUBLESHOOTING.....	22
<b>SPECIFICATIONS .....</b>	<b>23-24</b>
<b>PARTS/DIAGRAMS .....</b>	<b>26-52</b>
HUBS/AXLES .....	26-27
HITCH.....	28-31
WING REST .....	32-33
RIGHT WING.....	34-35
LEFT WING .....	36-37
CENTER.....	38-39
FLOW DIVIDER/SMV .....	40-41
HITCH JACK.....	42-43
JACK HYDRAULIC DIAGRAM.....	44-45
TILT HYDRAULIC DIAGRAM .....	46-47
WING FOLD HYDRAULIC DIAGRAM.....	48-49
LIGHT DIAGRAM.....	50-51
ACRE METER .....	52
NOTES .....	53

# WARRANTY

---

Summers warrants only products of its manufacture against operational failure caused by defective materials or workmanship which occur during normal use within 36 months from the date of purchase by the end user from Summers dealer. Summers warrants land rollers for 10 years with 100% coverage of defective manufactured components in years 1-3, 75% in years 4-6 and 50% in years 7-10.

Summers obligation is to replace free of charge, any part of our product that Summers' inspection shows to be defective excluding transportation charges to Devils Lake, ND and return and also excluding all transportation costs from Summers' dealer to the dealer's customer and all other costs such as removal and installation expense. Other exclusions are bought out goods from other manufactures after year one. Examples include: cylinders, bearings, hubs & hoses.

Summers shall not be liable for loss of time, manufacturing costs, labor, material, loss of profits, consequential damages, direct or indirect, because of defective products whether due to rights arising under the contract of sale or independently thereof, and whether or not such claim is based on contract, tort or warranty.

Written permission for any warranty claim return must be first obtained from authorized Summers' personnel. All returns must be accompanied with a complete written explanation of claimed defects and the circumstances of operational failure.

Written warranty for all component parts used in the manufacturing of Summers products is available upon request. Warranty of such component parts will be determined by said component manufacturer upon their inspection of the claimed defective part.

Note: Honda engines and all tires must be taken to local authorized dealer for warranty and service.

**THIS EXPRESS WARRANTY IS THE SOLE WARRANTY OF SUMMERS. THERE ARE NO WARRANTIES WHICH EXTEND BEYOND THE WARRANTY HEREIN EXPRESSLY SET FORTH. THE SALES FOR PRODUCTS OF SUMMERS UNDER ANY OTHER WARRANTY OR GUARANTEE EXPRESS OR IMPLIED IS NOT AUTHORIZED. THIS WARRANTY VOIDS ALL PREVIOUS ISSUES.**



# GENERAL INFORMATION

---

This book is composed of four basic sections: Safety, Operation and Maintenance, Specifications, and Parts. The Operation Section provides information for the proper operation and maintenance of your Summers WING FOLD LAND ROLLER. A complete parts breakdown is provided in the Parts Section.

Parts are referenced in each drawing with the Summers Manufacturing Part Number. Use this Part Number when ordering replacement parts from your Summers dealer.

Reference to “Right” and “Left” in this book is determined when the machine is viewed from the rear.

It is the policy of this company to improve its products whenever possible and practical to do so. We reserve the right to make changes or improvements in the design or construction of parts at any time without incurring the obligation to install such changes on products previously delivered.

**Summers Manufacturing Company, Inc. strongly recommends that each Operator READ and UNDERSTAND the Operator’s Manual before using the machine. In addition, this Operator’s Manual should be REVIEWED at least ANNUALLY thereafter.**

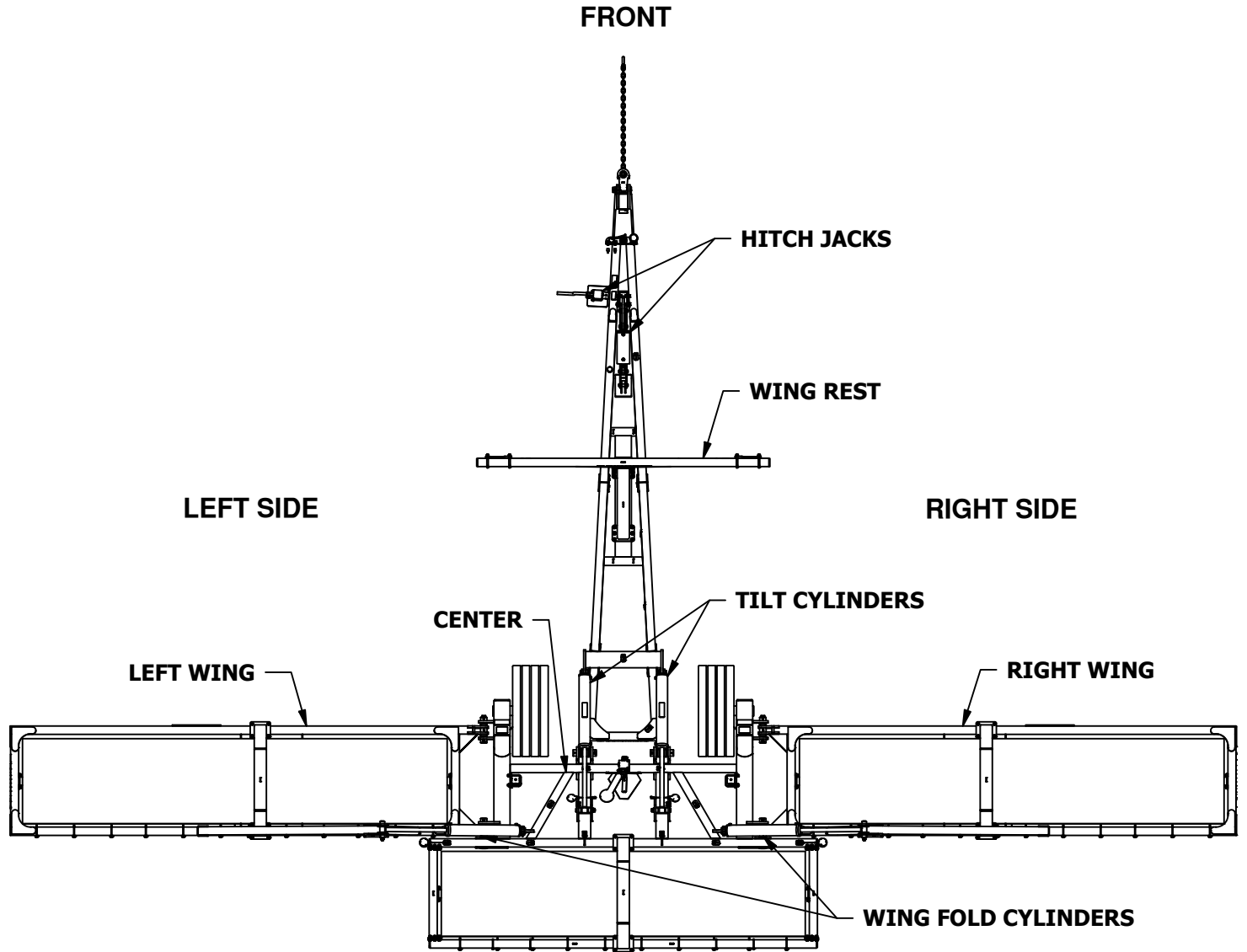
Scan QR Code below for the latest version of all Summers Operator's Manuals.



OWNER REGISTRATION			
Name		Machine Size	
Address		Serial Number	
City			(located on hitch)
State/Province		Date Purchased	
Mail Code		Dealer	

# GENERAL INFORMATION

## OPERATOR ORIENTATION



---

THIS PAGE IS INTENTIONALLY  
LEFT BLANK

# SAFETY

---

## SAFETY ALERT SYMBOL



This symbol is used to denote possible danger and care should be taken to prevent bodily injury.

This symbol means:

**ATTENTION! BECOME ALERT!  
YOUR SAFETY IS INVOLVED!**



Indicates an imminently hazardous situation which, if not avoided, will result in death or serious injury. This signal word is limited to the most extreme situations.



Indicates a potentially hazardous situation which, if not avoided, could result in death or serious injury.



Indicates an potentially hazardous situation which, if not avoided, may result in minor or moderate injury. It may also be used to alert against unsafe practices.



Indicates important information being conveyed. It may be safety or operational in nature.

# SAFETY

## GENERAL SAFETY PRACTICES

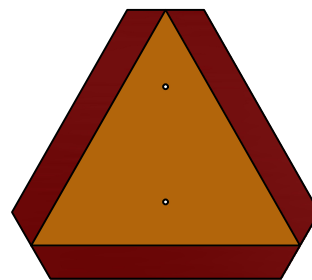
1. READ AND UNDERSTAND Operator's Manual before using machine. Review at least annually thereafter.
2. VERIFY all safety devices and shields are in place before using machine.
3. KEEP hands, feet, hair and clothing away from moving parts.
4. STOP engine, place all controls in neutral, set parking brake, remove ignition key and wait for all moving parts to stop before servicing, adjusting or maintaining.
5. USE CYLINDER LOCKS or lower hydraulically elevated implement components.
6. BE CAREFUL when working around high pressure hydraulic system.
7. DO NOT ALLOW RIDERS.

## TRANSPORT SAFETY

1. Road speed should not exceed 20 mph (32 km/hr).
2. Do not tow if the implement's towing vehicle ratio is greater than 1.5:1. See Specifications Section for implement weights.
3. If more than one implement is to be pulled by a towing vehicle, it is recommended that each implement is to be a maximum of 50% of the weight of the preceding implement. If it is not possible to reach this weight limit, transport the implements separately.
4. When approaching rough roads/ground (such as entering a road), slow down to a safe driving speed.
5. Check all lights and reflectors to ensure ALL regulations are met. Make sure the SMV emblem is attached to the implement and is clearly visible from the rear. SMV emblems are only attached to vehicles traveling slower than 25 mph (40 km/hr). The most hazardous conditions to drive in are a daybreak and dusk. The use of a pilot car is recommended.
6. Always install ALL safety locks before transporting an implement.
7. Always park implements on a firm, level surface.



SPEED INDICATOR SYMBOL  
(SIS)



SLOW MOVING VEHICLE EMBLEM  
(SMV)

## SAFETY LIGHT OPERATION

The Summers WING FOLD LAND ROLLER is equipped with a 7-pin light connector which meets SAE J560 specifications. To protect the connector when not attached to towing vehicle, store the connector in the dust cap.

The Summers WING FOLD LAND ROLLER is also equipped with an Enhanced Flasher Lighting Module which meets ASABE S279 standards.

# SAFETY

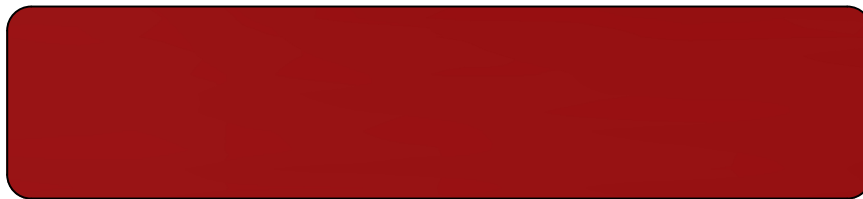
## SAFETY DECALS



8Z0800  
REFLECTOR AMBER ADHSVBCK98-



8Z0805  
REFLCTR REDORANGE ADHSVBK99-



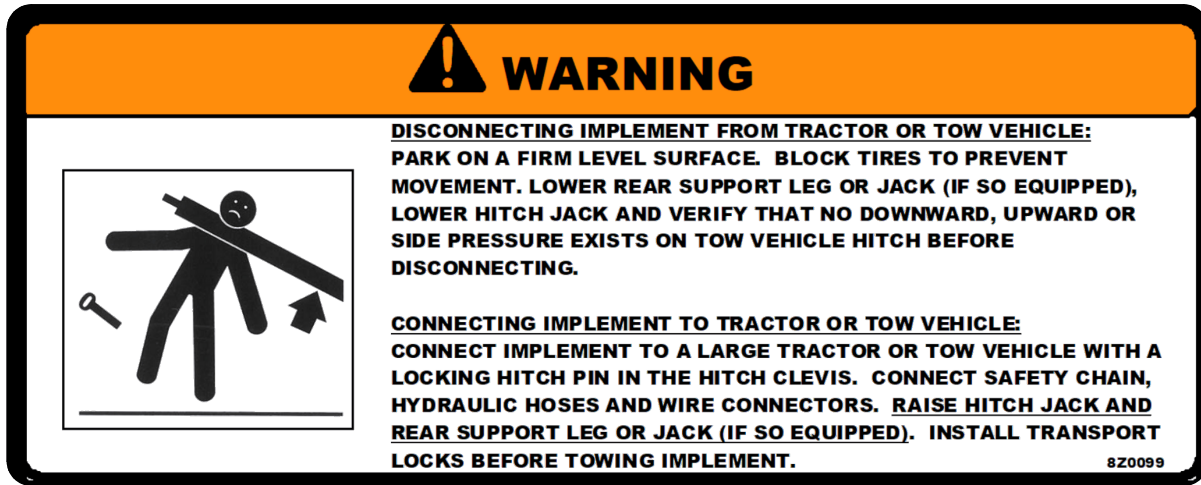
8Z0810  
REFLECTOR RED ADHSV-BACK 98-



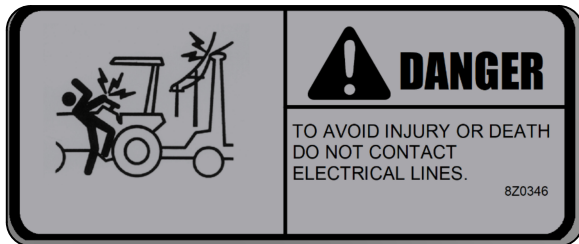
8Z0276  
GENERAL MACHINE CAUTION DECAL

# SAFETY

## SAFETY DECALS



8Z0099  
"WARNING" JACK DECAL



8Z0346  
ELECTROCUTION-TILLAGE EQUIP. DECAL



8Z0087  
DECAL "WARNING" PINCH POINT03-



8Z0344  
DECAL WING DANGER



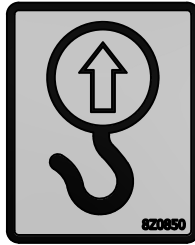
8Z0506  
NOTICE FLOAT DECAL

# SAFETY

## SAFETY DECALS



8Z0100  
MADE IN THE USA DECAL



8Z0850  
DECAL RIG POINT



8Z0106B  
DECAL "DANGER" WNG LNDRLR TRNS



8Z0055  
PLATE SERIAL NUMBER UNIVRSL



**SAFETY**

**DECALS**

---



8Z0245  
DECAL SUMMERS LOGO 4.5"



8Z0750  
DECAL SIZE ID 50'



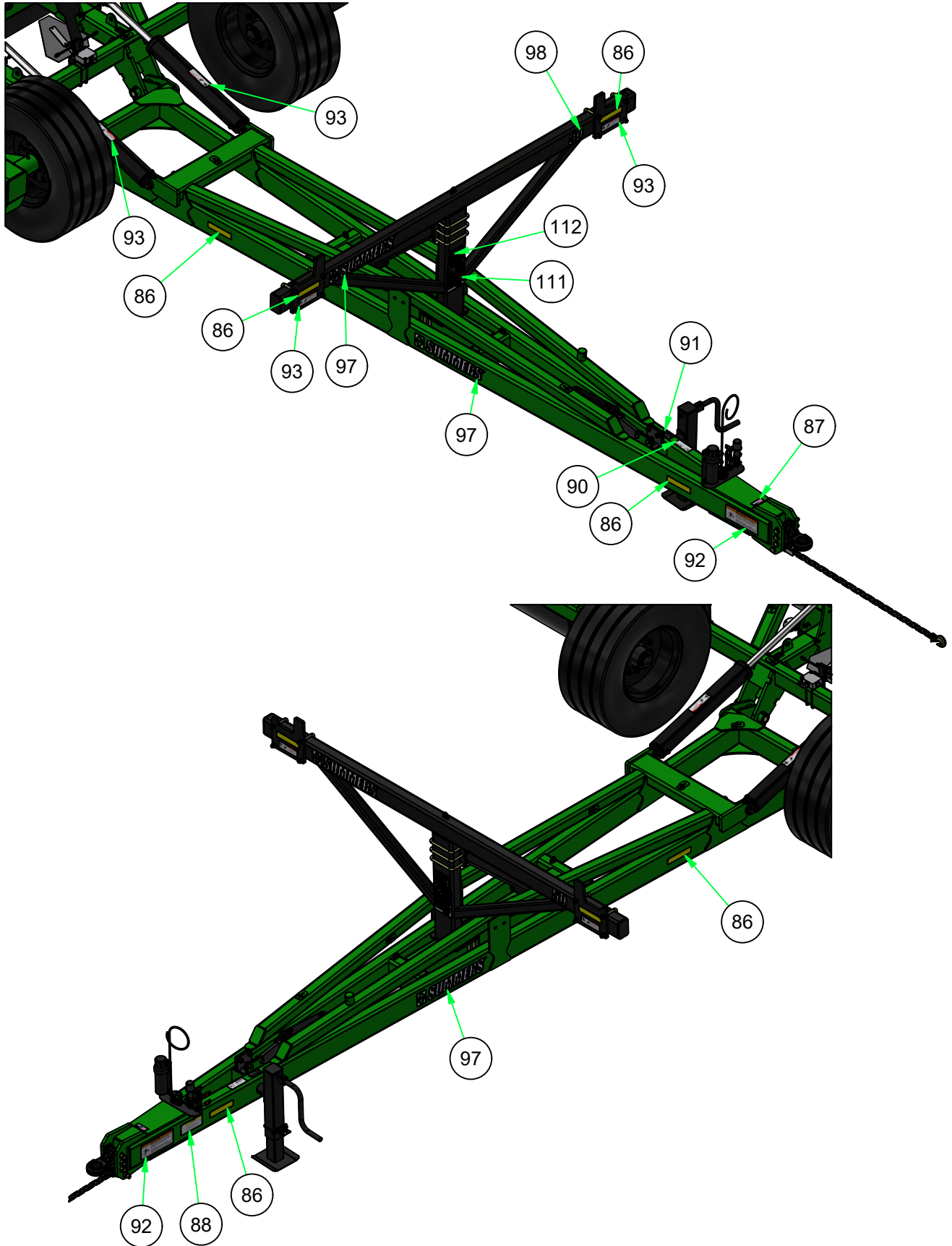
8Z0745  
DECAL SIZE ID 45'



8Z0741  
DECAL SIZE ID 41'

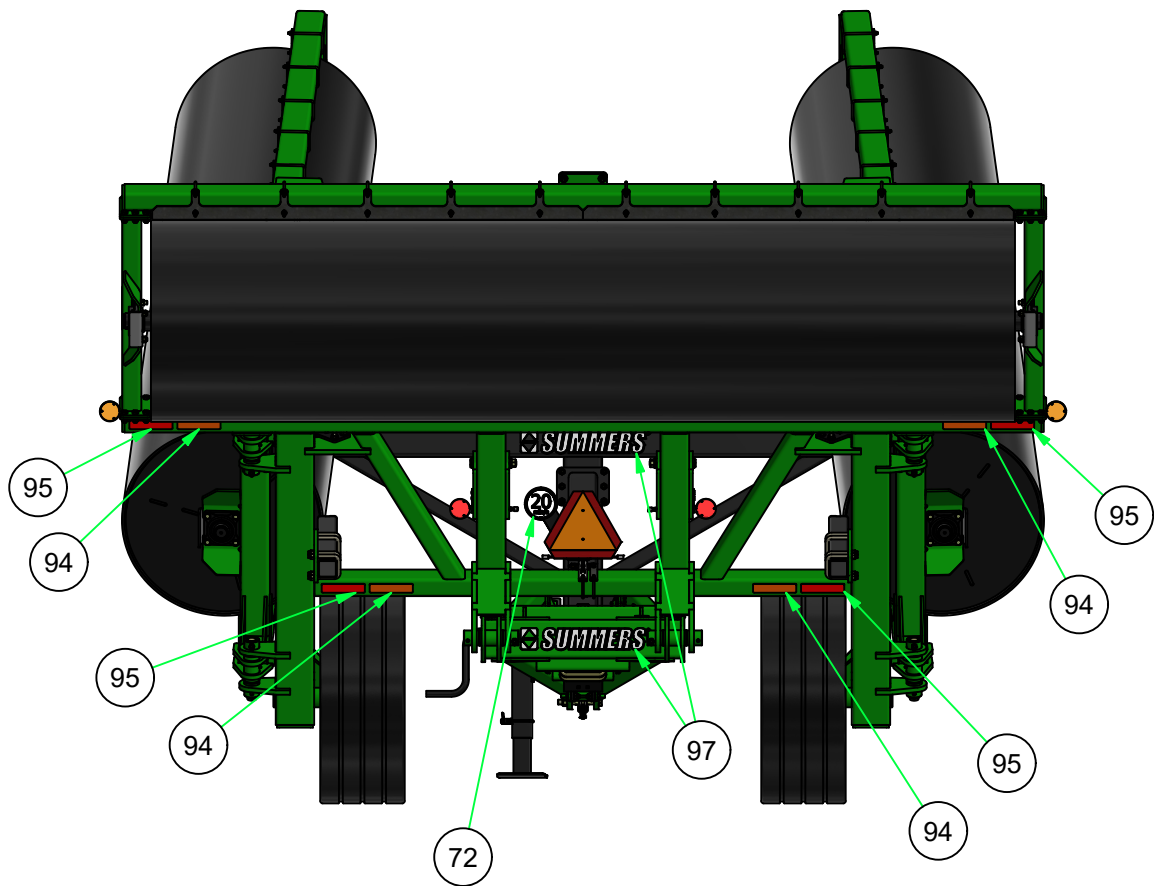
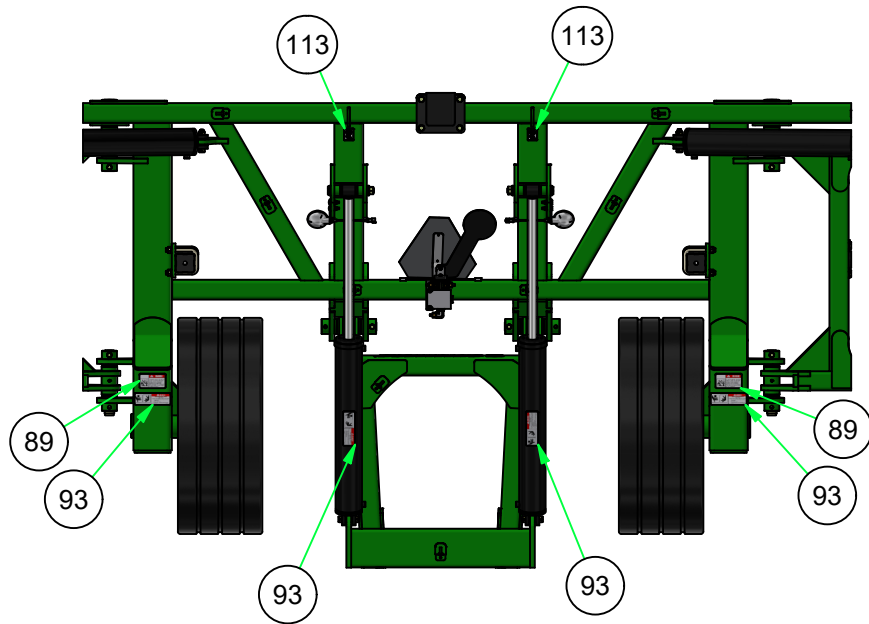
# SAFETY

## DECALS



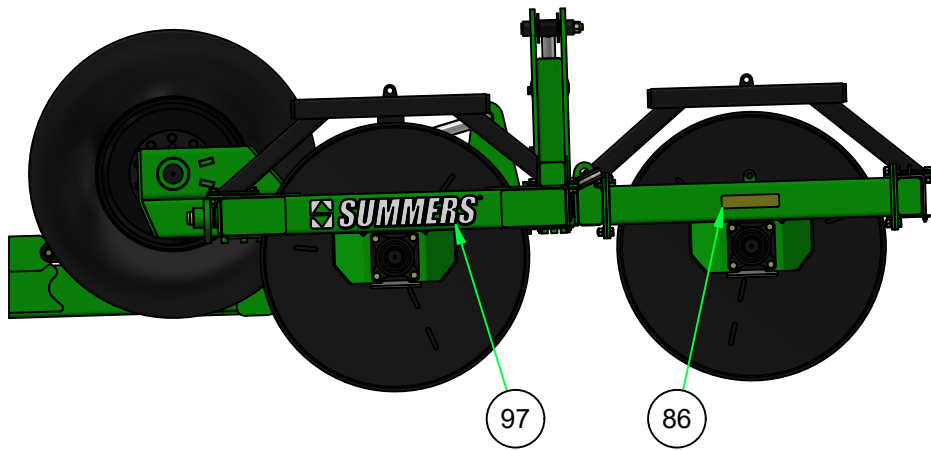
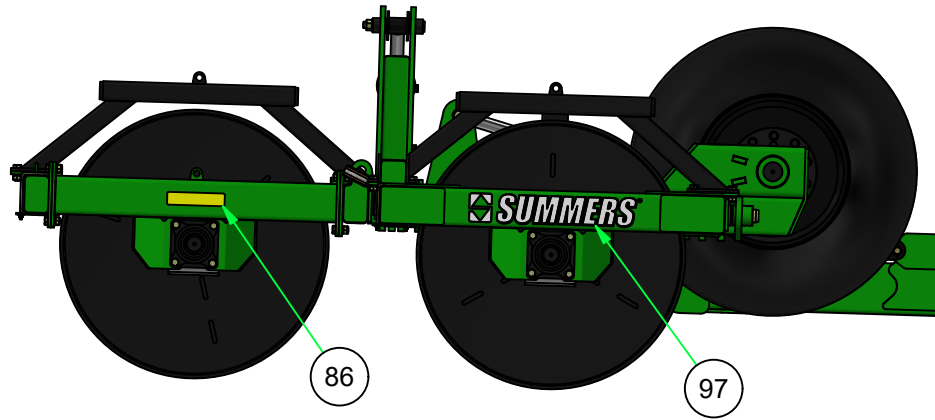
# SAFETY

## DECALS



# SAFETY

## DECALS



# SAFETY

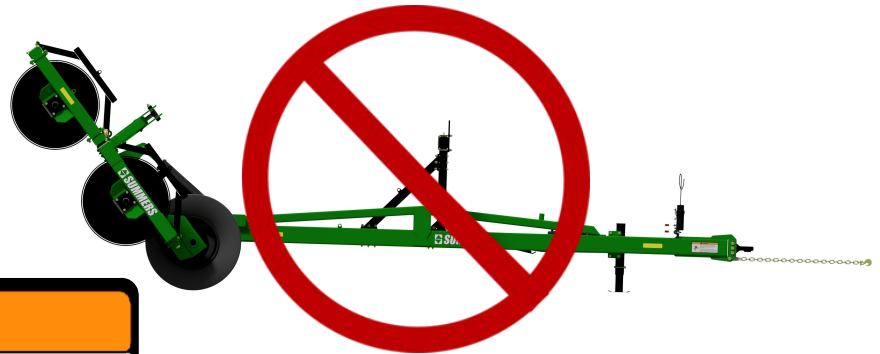
## DECALS

ITEM	PN	DESCRIPTION
72	8Z2606	DECAL 20 MPH SIS
86	8Z0800	REFLECTOR AMBER ADHSVBCK98-
87	8Z0100	MADE IN THE USA DECAL
88	8Z0276	GENERAL MACHINE CAUTION DECAL
89	8Z0344	DECAL WING DANGER
90	8Z0346	ELECTROCUTION-TILLAGE EQUIP. DECAL
91	8Z0055	PLATE SERIAL NUMBER UNIVRSL
92	8Z0099	"WARNING" JACK DECAL
93	8Z0087	DECAL"WARNING"PINCH POINT03-
94	8Z0805	REFLCTR REDORANGE ADHSVBK99-
95	8Z0810	REFLECTOR RED ADHSV-BACK 98-
97	8Z0245	DECAL SUMMERS LOGO 4.5"
98	8Z0750	DECAL SIZE ID 50'
98	8Z0745	DECAL SIZE ID 45'
98	8Z0741	DECAL SIZE ID 41'
111	8Z0106B	DECAL"DANGER" WNG LNDRLR TRNS
112	8Z0506	NOTICE FLOAT DECAL
113	8Z0850	DECAL RIG POINT

# OPERATION AND MAINTENANCE

**⚠ DANGER**


**NEVER PARK, UNHOOK OR SERVICE WITH WINGS RAISED**



**⚠ WARNING**

**DISCONNECTING IMPLEMENT FROM TRACTOR OR TOW VEHICLE:**  
PARK ON A FIRM LEVEL SURFACE. BLOCK TIRES TO PREVENT MOVEMENT. LOWER REAR SUPPORT LEG OR JACK (IF SO EQUIPPED), LOWER HITCH JACK AND VERIFY THAT NO DOWNWARD, UPWARD OR SIDE PRESSURE EXISTS ON TOW VEHICLE HITCH BEFORE DISCONNECTING.

**CONNECTING IMPLEMENT TO TRACTOR OR TOW VEHICLE:**  
CONNECT IMPLEMENT TO A LARGE TRACTOR OR TOW VEHICLE WITH A LOCKING HITCH PIN IN THE HITCH CLEVIS. CONNECT SAFETY CHAIN, HYDRAULIC HOSES AND WIRE CONNECTORS. RAISE HITCH JACK AND REAR SUPPORT LEG OR JACK (IF SO EQUIPPED). INSTALL TRANSPORT LOCKS BEFORE TOWING IMPLEMENT. 8Z0099



**IF THE HITCH IS DISCONNECTED IN THIS POSITION, THE HITCH WILL RAISE AND THE BACK OF THE MACHINE WILL DROP!**



**ONLY DISCONNECT WHEN WINGS ARE IN THE WING RESTS OR THE MACHINE IS FULLY UNFOLDED.**

**ONLY DISCONNECT ON FIRM LEVEL SURFACES.**

**TO ENSURE THE MACHINE IS COMPLETELY UNFOLDED, PUT BOTH HYDRAULIC CIRCUITS IN FLOAT BEFORE DISCONNECTING.**

**BLOCK WHEELS OR DRUMS. CLOSE TILT AND WING HYDRAULIC BALL VALVES.**

**LOWER HITCH JACK AND ENSURE THERE IS NO DOWNWARD, UPWARD OR SIDE PRESSURE ON TOW HITCH BEFORE DISCONNECTING.**



# OPERATION AND MAINTENANCE

## LAND ROLLER OPERATIONAL SAFETY

**READ AND UNDERSTAND** Operator's Manual before using machine. Review at least annually thereafter.

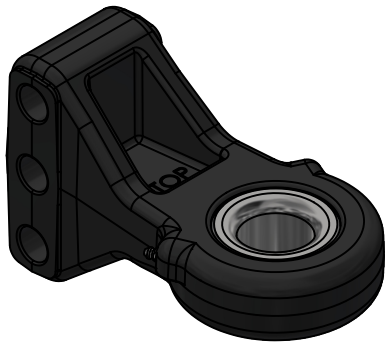
**VERIFY** that all safety devices and shield are in place before using machine.

**KEEP** hands, feet, hair and clothing away from moving parts.

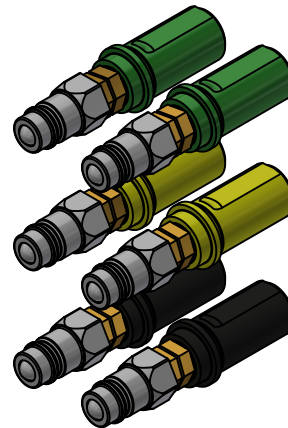
**STOP** engine, place all controls in neutral, set parking brake, remove ignition key and wait for all moving parts to stop before servicing, adjusting, maintaining or unplugging.

### CONNECTING TO THE TRACTOR

The Summers Wing Fold Land Rollers are equipped with an Articulating Ball Hitch. This hitch is designed to eliminate "slop" between the implement hitch and the tractor drawbar. All the Wing Fold Land Rollers will come with a Category 4 hitch that uses a 2" diameter hitch pin. Tractor must have a hammer strap to handle the negative tongue weight during folding.



8D0760  
HITCH ARTIC. BALL CAT 4



The Wing Fold Land Roller has 3 hydraulic circuits.

**Green:** Tilt

**Gold:** Wing Fold

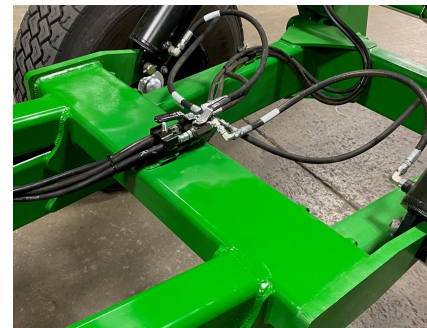
**Black:** Hydraulic Hitch Jack

### Initial Hookup

1. Insure tip and couplers are **CLEAN**. Plug **Black** Hydraulic Hitch Jack hoses into desired tractor outlet. Open hydraulic ball valve on hydraulic jack cylinder. Adjust Jack to allow Hitch connection.
2. Make tractor to implement hitch connection with locking draw pin and safety chain. Tractor must have a hammer strap hitch.
3. Retract jack and move to storage position. close hydraulic ball valve.
4. Insure tip and couplers are **CLEAN**. Plug **Green** Tilt Cylinder hoses into desired tractor outlet. Adjust hydraulic flow rate to 35% of maximum.
5. Plug **Gold** Wing Fold Cylinder hoses into desired tractor outlet. Adjust flow rate to 35% maximum.
6. Connect safety lights to 7 pin receptacle.



Hitch Jack Ball Valve



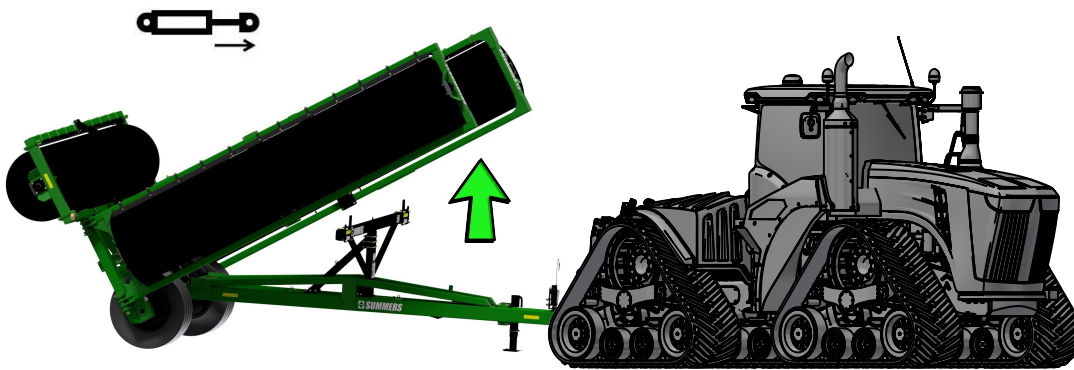
Wing Fold and Tilt Ball Valve Location



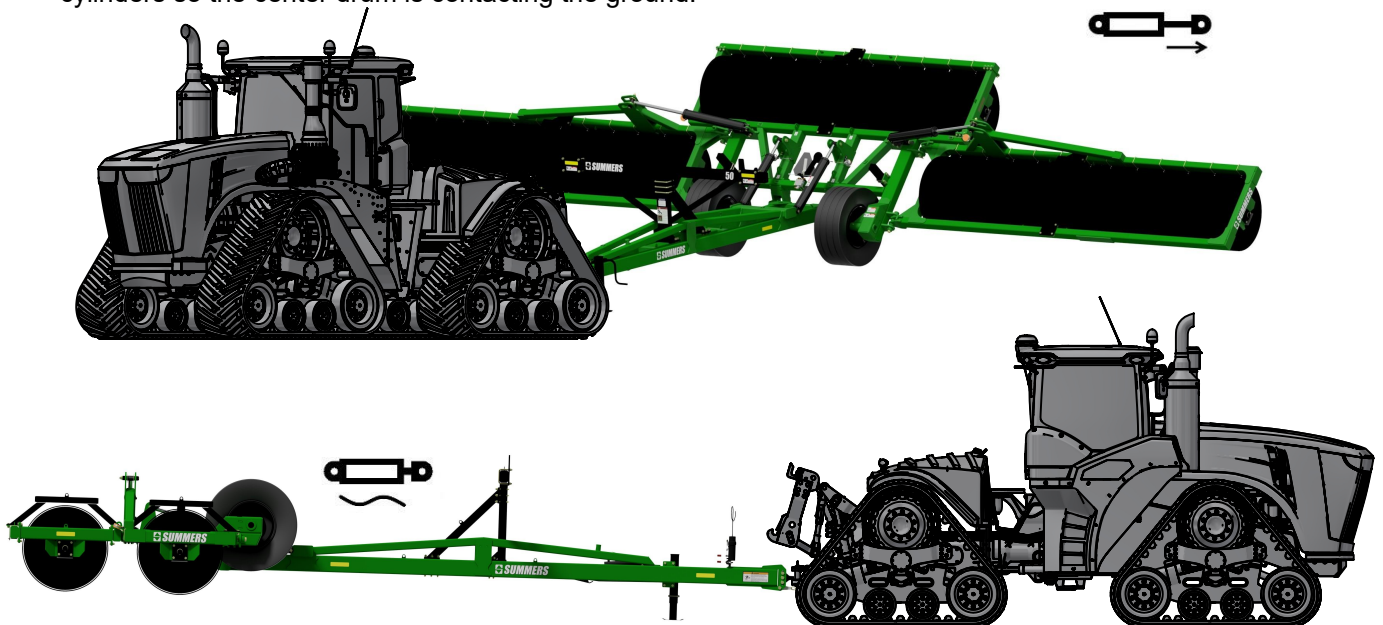
# OPERATION AND MAINTENANCE

## PREPARING FOR FIELD OPERATION

1. **WARNING:** Wing Fold Land Roller must be attached directly to tractor drawbar and not an intermediate towed vehicle or implement. Loss of control could result causing serious injury or death to you or others.
2. Park tractor and Wing Fold Land Roller on firm level surface with enough open area free of overhead obstacles.
3. Open hydraulic ball valves for the tilt and wing fold hydraulic circuits.
4. Operate tractor hydraulics from operator station only. Do not allow anyone to stand near the Wing Fold Land Roller when folding or unfolding. Do not raise or lower Wing Fold Land Roller when implement is moving.
5. Extend the Tilt cylinders until the wings are around one foot away from the wing rest.



6. Lower wings by extending the Wing Fold cylinders. When the wings contact the ground, extend the Tilt cylinders so the center drum is contacting the ground.



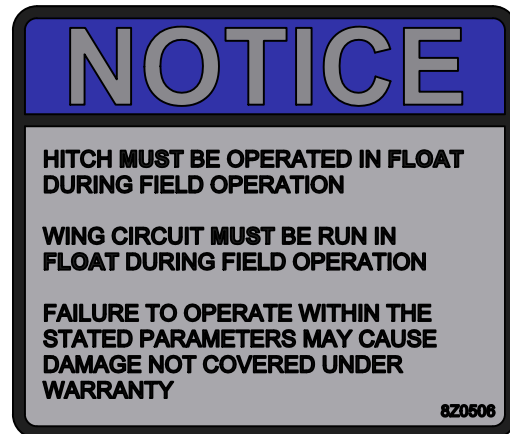
7. Put Wing Fold and Tilt cylinders in Float to ensure the rollers will contour the ground.



# OPERATION AND MAINTENANCE

## FIELD OPERATION

1. Ensure Wing Fold and Tilt cylinders are in Float to ensure the rollers will contour the ground.

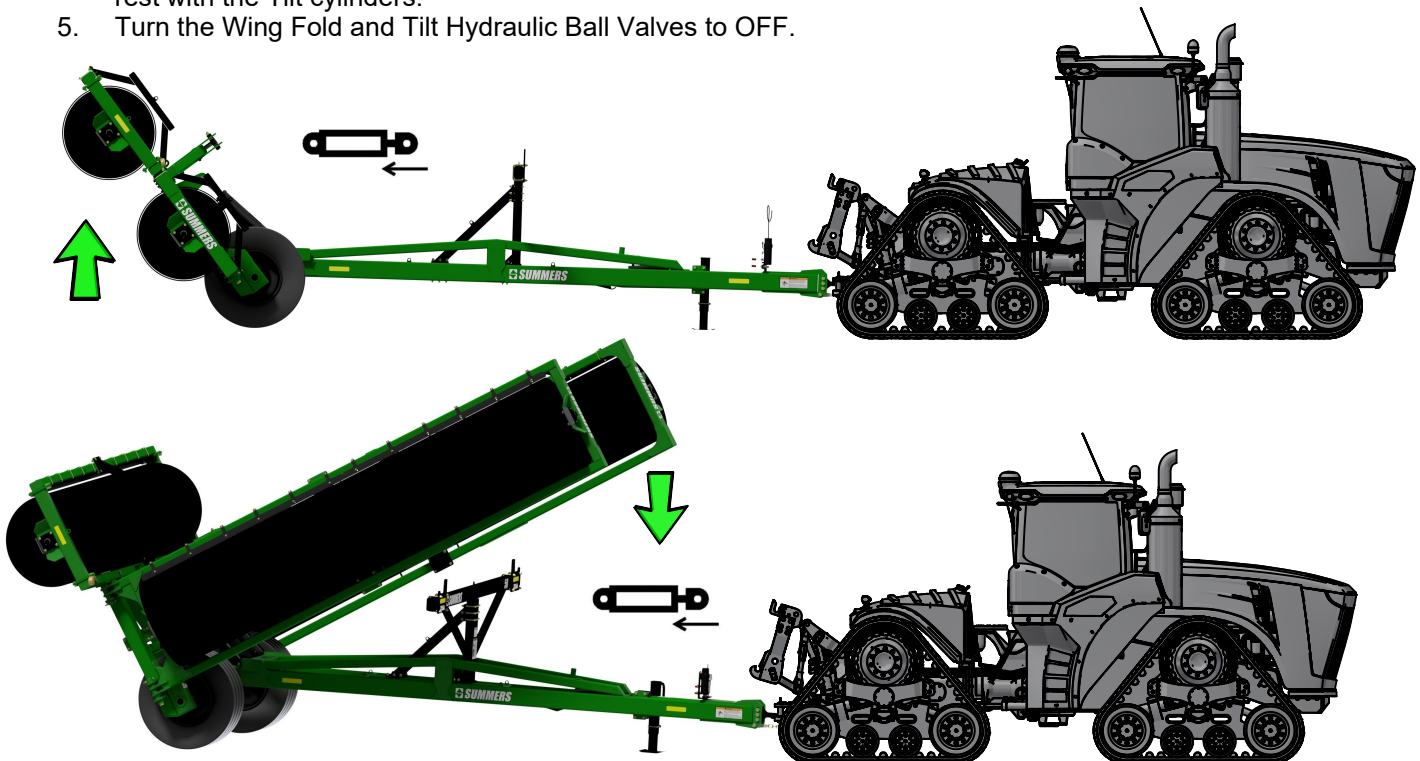


8Z0506  
NOTICE FLOAT DECAL

2. Choose an operating speed that achieves desired results. Operating at over 7 MPH will decrease effectiveness and increase chance of immovable rocks denting roller tube. Denting of roller tube is **NOT** covered by warranty!

## TRANSPORT

1. The Wing Fold Land Roller must be connected to a tractor drawbar.
2. Park tractor and Wing Fold Land Roller on firm level surface with enough open area free of overhead obstacles.
3. Take both hydraulic circuits out of Float.
4. Wing Fold circuit has a flow divider. Extend Wing Fold Cylinders for 20 seconds to ensure they are at the same length. Retract Tilt Cylinders until there is 6-8 inches of Cylinder rod left Extended. Carefully Retract the Wing Fold Cylinders until both wings are contacting wing stops. If one Wing hits the Wing Stop first, hold retract for a few seconds until second Wing contacts stop. Lower the machine the rest of the way into the wing rest with the Tilt cylinders.
5. Turn the Wing Fold and Tilt Hydraulic Ball Valves to OFF.



# OPERATION AND MAINTENANCE

---

## TRANSPORT CONTINUED

1. Tow with a secure drawbar pin and safety chain attached to tow vehicle.
2. Ensure safety lights, reflective decals, Speed Identification Symbol, and Slow Moving Vehicle Sign are in working condition and visible.
3. Tow vehicle must be able to withstand the tongue weight of machine. See specifications page for machine tongue weight.
4. Tow vehicle must be 1.5 times machine weight to safely transport machine on roads. See specifications page for machine weight.
5. Maximum towing speed is 20 MPH.

## DISCONNECTING FROM THE TRACTOR

1. Ensure parking surface is firm and level.
2. Place wheel chocks in front and behind wheels in transport position or place chocks in front and behind drums if parking in field position. Drums need to be fully contacting ground.
3. Open hitch jack ball valve and raise hitch.
4. Ensure pressure is off hitch before removing hitch pin. NEVER disconnect with drums partially off the ground. Ensure there is no negative tongue pressure if unhooking in field position.
5. Disconnect hoses and light harness.

## STORAGE

1. Follow steps outlined in "DISCONNECTING FROM THE TRACTOR"
2. Clean and remove all excessive dirt and grease from Land Roller.
3. Grease all zerks.
4. To prevent rusting, repaint any areas that have been worn, chipped or scratched.

## TROUBLESHOOTING

PROBLEM	CAUSE	CORRECTION
Center drum is not rolling on the ground.	Tilt Circuit not in Float.	Both Wing and Tilt Circuits need to be in Float.
Wings do not fold up evenly.	Wing circuit has flow divider.	Extend Wings 20 seconds before folding to allow flow divider to work properly. Hold Wing circuit at end of stroke to contact stops.

## MAINTENANCE

### AFTER FIRST 4 HOURS:

Check fasteners and hydraulic fittings for tightness. Re-torque as needed. See Fastener Table in Specifications section.

### EVERY 40 HOURS:

Grease articulating ball hitch (if equipped)

### SEASONALLY:

Grease Fold Cylinder pivot.

Inspect and re-pack Wheel Bearings.

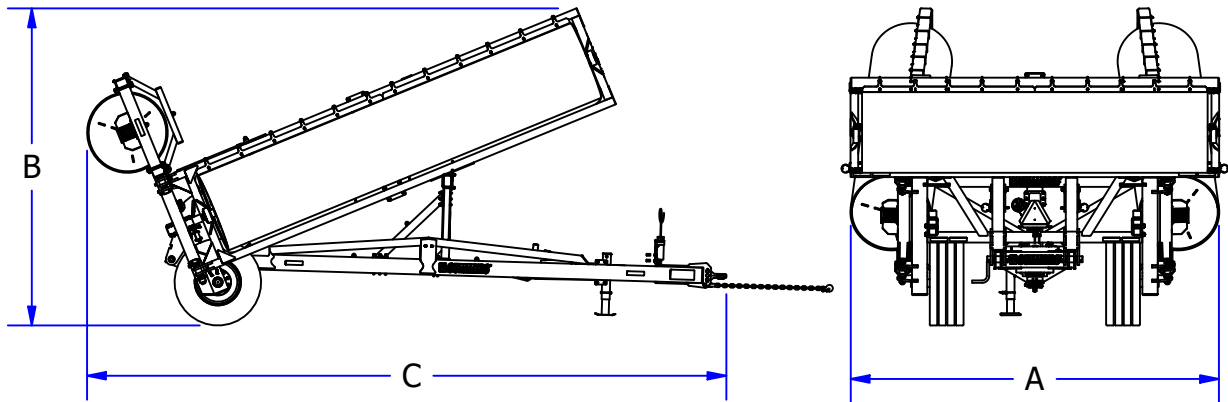
Check fasteners for tightness. Re-torque as needed.

Inspect Hydraulic system for leaks and wear. Re-tighten fittings and/or replace hoses as needed.

Inspect tires for wear and check inflation pressure. See Tire Information in Specifications section.

# SPECIFICATIONS

DIMENSIONS/WEIGHT (APPROX.)						
MACHINE SIZE	TRANSPORT WIDTH (A)	TRANSPORT HEIGHT (B)	MACHINE WEIGHT	OVERALL LENGTH (C)	TRANSPORT HITCH WEIGHT	WORKING WIDTH
41'	16' 2"	11' 11"	21,791	29'	3500	41'
45'	16' 2"	12' 6"	22,776	29'	4500	44.5'
50'	16' 2"	13' 6"	24,200	29'	6000	49.5'



WHEEL HUBS		
PART NUMBER	HUB	WHEEL BOLT/NUT TORQUE
8K1109	1010 - 10 BOLT	275 FT-LB

TIRE INFORMATION			
PART NUMBER	SIZE	LOAD INDEX	PRESSURE
8K7470	425/65R22.5	L	120 PSI

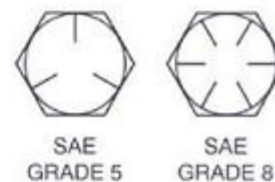
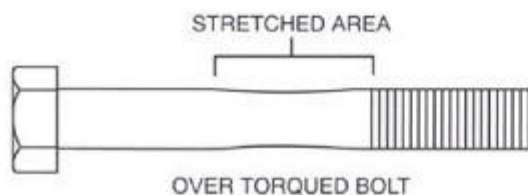
# SPECIFICATIONS

DO NOT use these values if a different torque value to tightening procedure is given for a specific application. Torque values listed are for general use only. Periodically inspect fasteners for condition and tightness. Re-torque as necessary.

FASTENER INFORMATION					
BOLT SIZE	WRENCH SIZE	GRADE 5		GRADE 8	
		FT-LB	N-m	FT-LB	N-m
1/4"	7/16" or 3/8"	7	9.5	12	17
5/16"	1/2"	15	20	25	34
3/8"	9/16"	30	41	45	61
7/16"	5/8" or 11/16"	45	61	70	95
1/2"	3/4"	70	95	105	142
9/16" WHEEL BOLTS	7/8"	170	231		
5/8"	15/16"	170	231	210	285
5/8" WHEEL NUTS	1-1/16"	240	325		
3/4"	1-1/16"* or 1-1/8"	250	339	375	509
3/4" WHEEL NUTS	1-1/8"	275	373		
7/8"	1-5/16"	350	475	600	814
1"	1-1/2"	450	610	880	1193
1-1/4"	1-7/8"	500	678		
1-1/2"	2-1/4"	570	773		
2"	3-1/8"	1200	1627		
METRIC					
M5	3 mm socket or 8 mm	22 IN-LB	2.5 N-m		
M6	4 mm socket	70 IN-LB	8 N-m		

\\ENGR\CD\_2\MANUAL REFERENCES\BOLT TORQUE.xlsx

\*Nylon Lock Nut

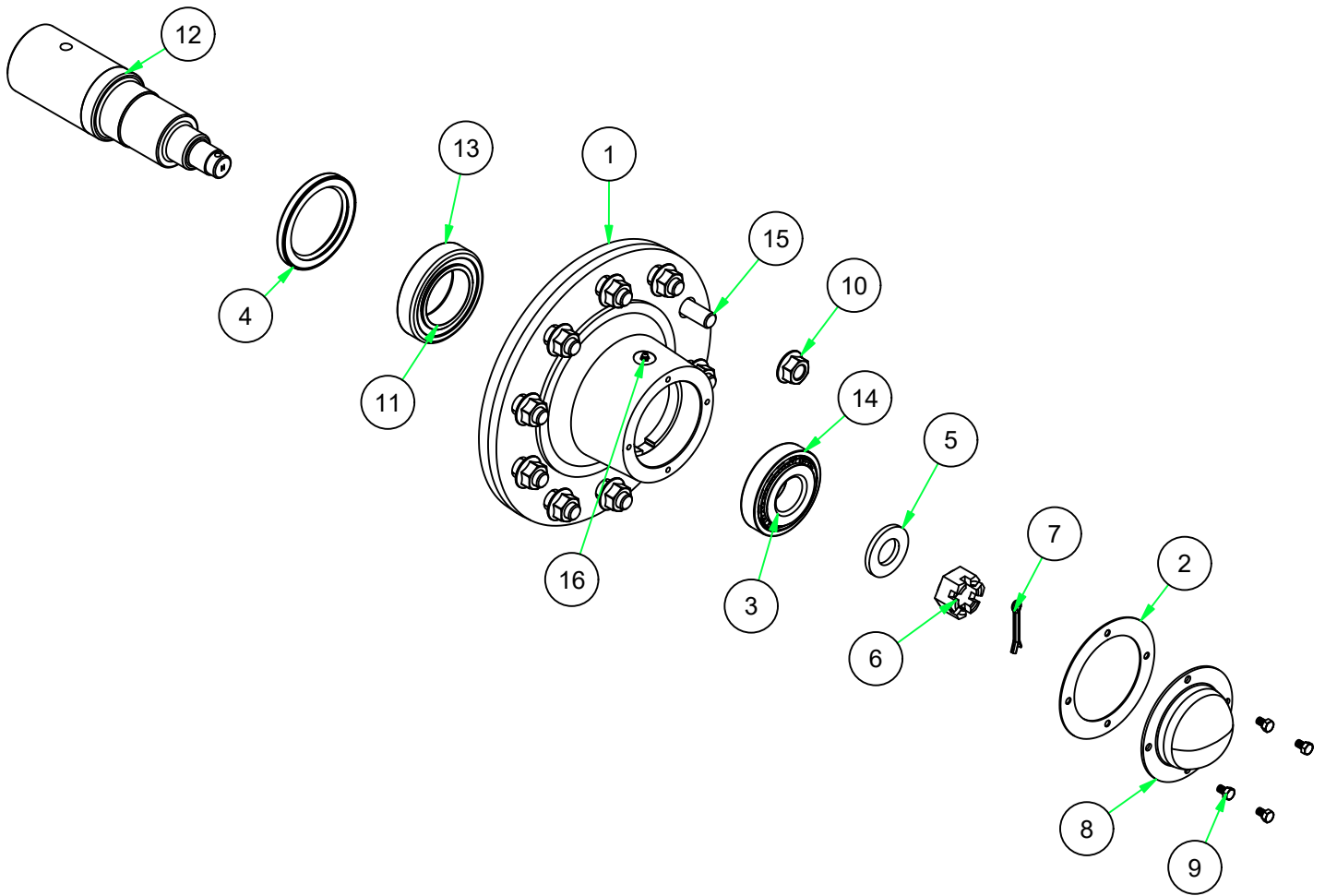


---

THIS PAGE IS INTENTIONALLY  
LEFT BLANK

# PARTS

## 8K1109 HUB ASSEMBLY

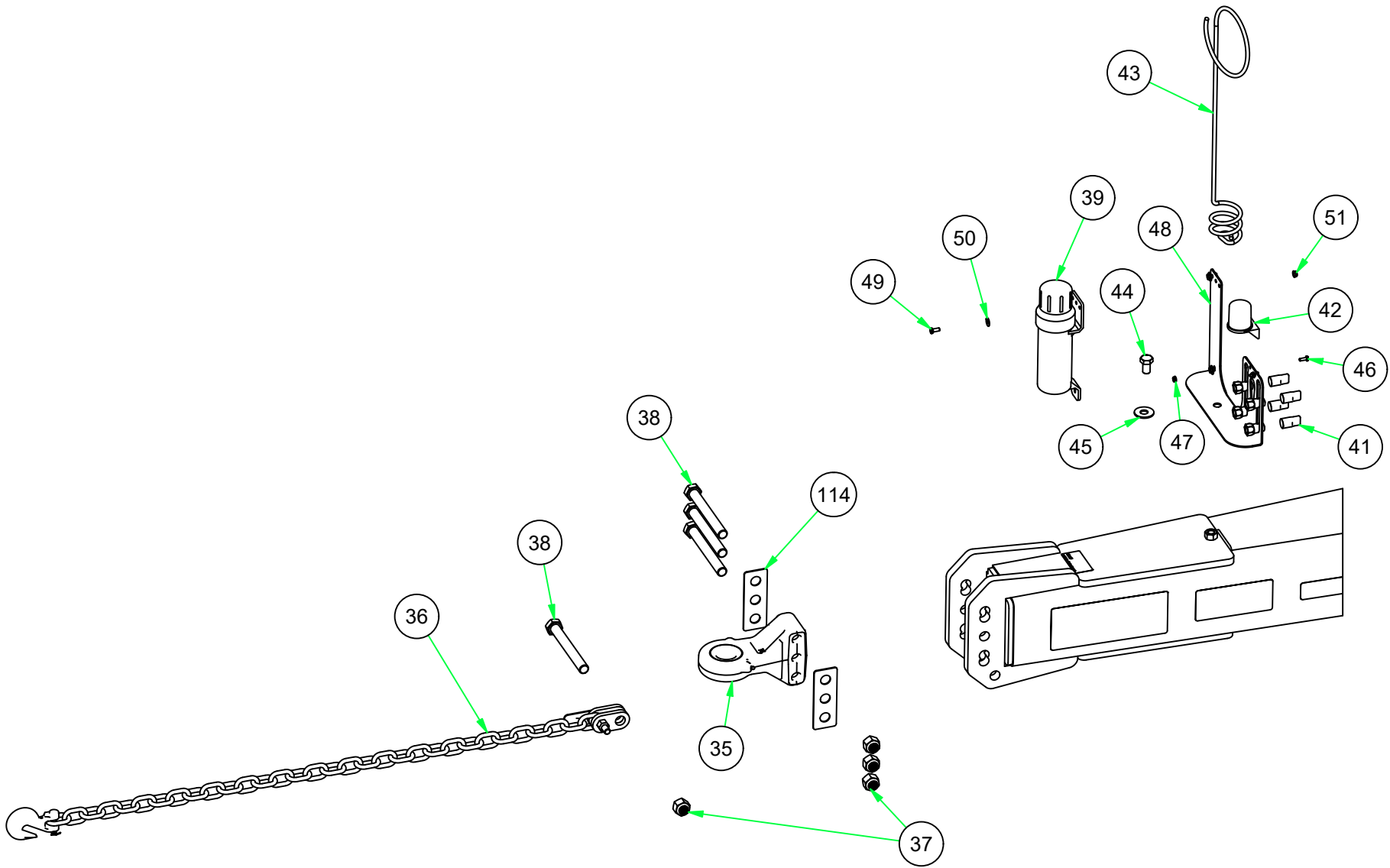


# PARTS

---

## 8K1109 HUB ASSEMBLY

ITEM	PN	DESCRIPTION
1	8K7210	HUB H1010 W/CUPS&ZRK 10BLT 15K
2	8K7212	GASKET HUB CAP H1010
3	8K7218	BEARING OUTER 12&15K H1010
4	8K7220	SEAL 3" ID 12K H1010 SE48
5	8X0328	WASHER 1.312"IDX2.5 OD-1/4" BL
6	8D5314	NUT 1-1/4"-12 HEX SLOT GR2 PLN
7	8X0414	COTTER PIN 1/4 X 2" YZ
8	8K7213	HUB CAP H1010 DC27
9	8K7214	BOLT HUB CAP H1010
10	8K7216	NUT 3/4"-16UNF FLANGE
11	8K7219	BEARING INNER 15K H1010 33275
12	8K7251	3.375' SPINDLE FOR 15K HUB
13	8K7231	RACE INNER 15K H1010 33462
14	8K7232	RACE OUTER 12K&15K H1010 453A
15	8K7215	STUD WHEEL 3/4-16 UNF X 2-5/8"
16	8X0708	ZERK 1/4"-28 NF STR YZ



HITCH

PARTS

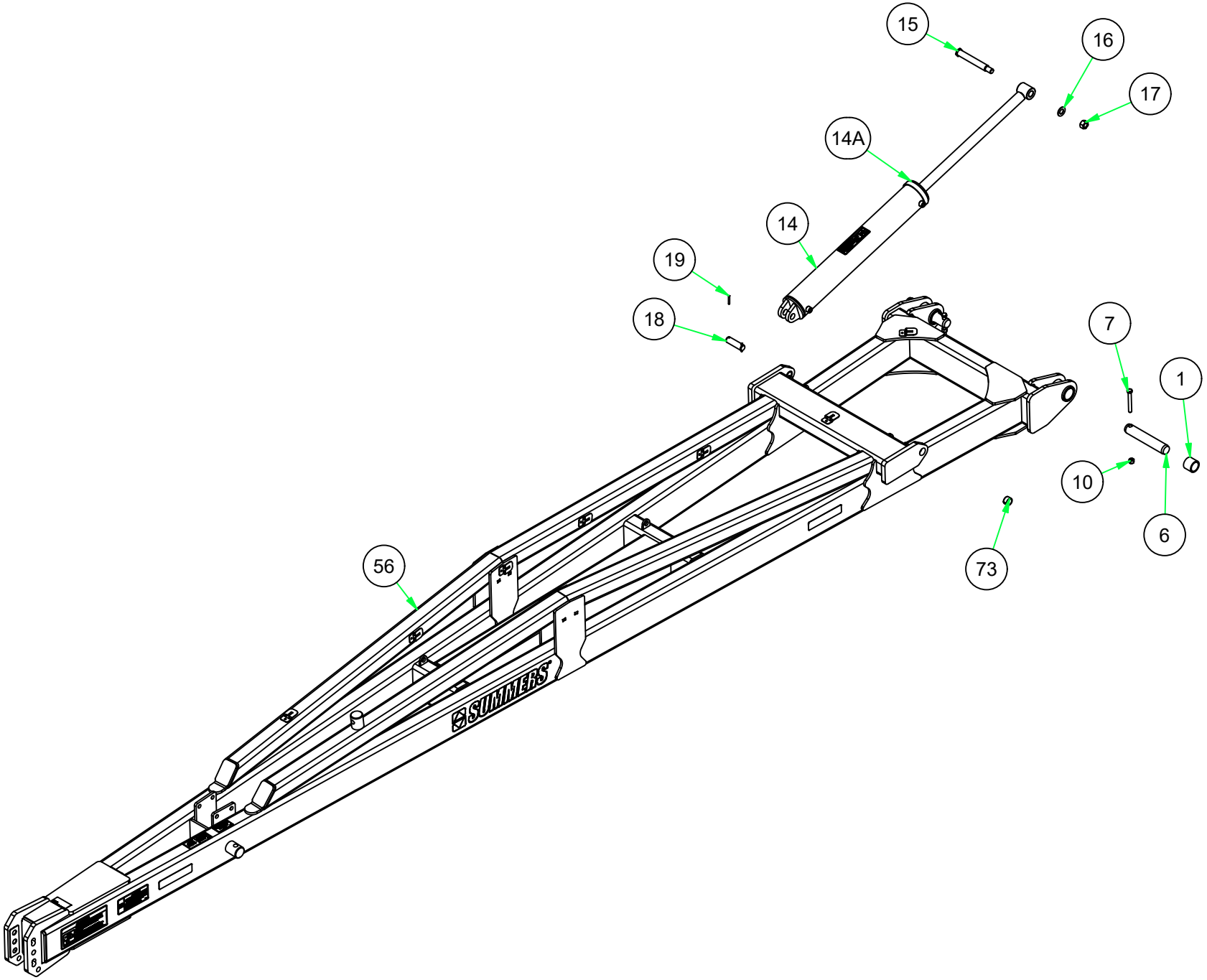


# PARTS

---

## HITCH

ITEM	PN	DESCRIPTION
35	8D0760	HITCH ARTIC. BALL CAT 4
36	8D2470	SAFETY CHAIN 7/16" X 5'
37	8X0281	NUT 1"-8NC NY-LOCK GR2 YZ
38	8X0146	BOLT 1-8NCX8.5" W/1.5"THD GR5ZDI
39	8Z1010	MANUAL HOLDER TUBE
41	8S3095	CAPLUG FITS ISO HYD COUPLR 08-
42	8K8067	DUST CAP FOR 7PIN CONNECT00-
43	8D8502	HYD HOSE HOLDER H-DUTY BLK 14-
44	8X0110	BOLT 3/4-10NC X 1-1/4" GR5 YZ
45	8X0318	WASHER 3/4"(13/16"ID)FLAT YZ
46	8X0000	BOLT 1/4-20X3/4" FLLTHD GR5 YZ
47	8X0223	NUT 1/4"-20NC SERFLANG GR2 YZ
48	8D8494	MANUAL HYDRAULIC HOLDER 23-
49	8X0021	BOLT 5/16-18NC X 3/4" GR5 ZDI
50	8X0329	WASHER 5/16"(3/8" ID)FLAT YZ
51	8X0211	NUT 5/16"-18NC SERFLANG GR2 YZ
114	8D0790	HITCH SHIM PTD



HITCH

PARTS

# PARTS

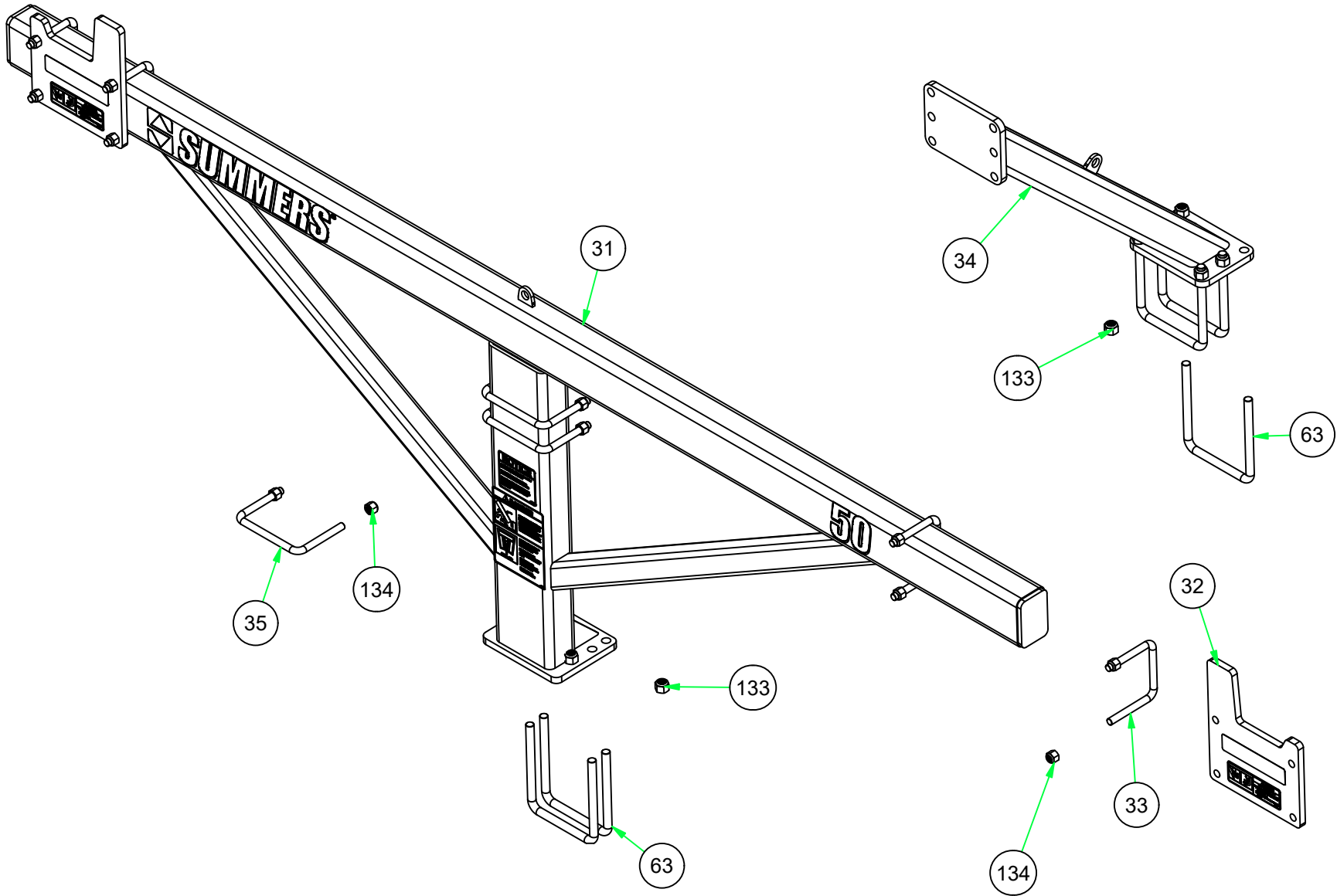
---

## HITCH

ITEM	PN	DESCRIPTION
1	8X3142	SLEEVEBRNG 2.50X2.0"ID- 2.0"
6	8P3900	PIN 2 X 11-1/8" HARDENED
7	8X0095	BOLT 5/8-11NC X 5" GR5 ZDI
10	8X0253	NUT 5/8"-11NC NY-LOCK GR2 YZ
14	8C0532	HYD CYL 5" X 32" 3500PSI
14A	8K8660	SEAL KIT 5 X 32 & 36" CTD 89-
15	8T3300	PIVOT BOLT CHSLTRP&WNLFT YZ
16	8X0316	WASHER SAE FLAT 1" ZDI
17	8X0282	NUT 1"-14NF TOPLOCK GR2 ZDI
18	8K9106	PIN 1-1/4 X 4-3/8" HARDENED
19	8D9108	ROLL PIN 1/4 X 2" YLW ZNC
56	8P4010P	HITCH LANDROLLER PTD
73	8R6810	SPLITSTEELBUSH1.62X1.25"ID- 1"

# PARTS

## WING REST

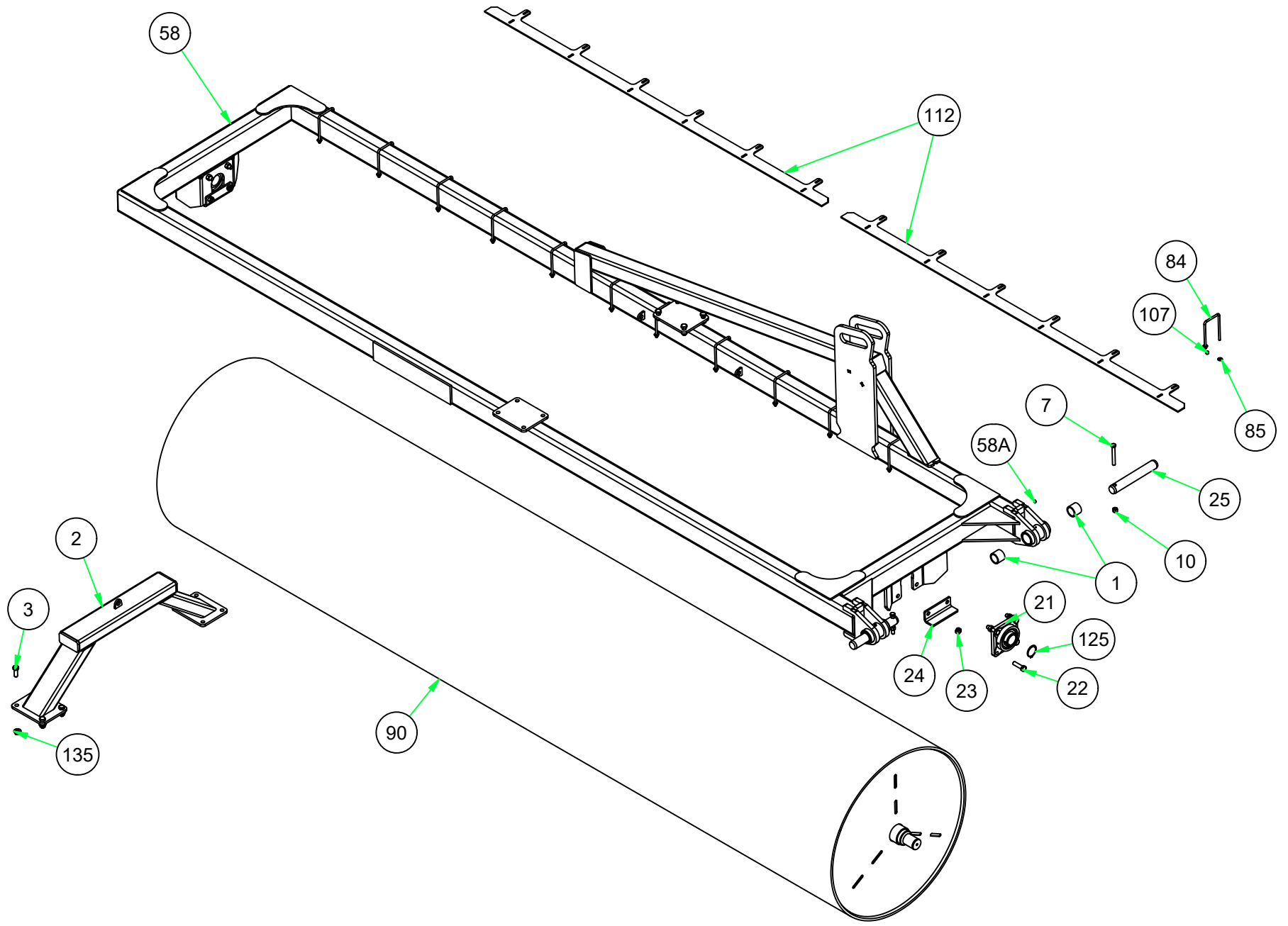


# PARTS

---

## WING REST

ITEM	PN	DESCRIPTION
31	8P5031	LANDROLLER WING REST
32	8P4520	WING REST PLATE
33	8C1755	U-BOLT 3/4 X 6-1/16 X 6" SQ
34	8P5021	WING REST BRACE
35	8C1760	U-BOLT 3/4 X 8-1/16 X 6" SQ
63	8C1780	U-BOLT 7/8 X 8-1/16 X 10" SQ
133	8X0271	NUT 7/8"-9NC NY-LOCK GR2 YZ
134	8X0261	NUT NY-LOCK 3/4"-10NC GR2 ZDI
138A	8P0511	SEAL KIT 5.5X10"CTD 8P0510 11-
58A	8X0721	ZERK 5/16" -24 NF STR YZ
59A	8X0721	ZERK 5/16" -24 NF STR YZ

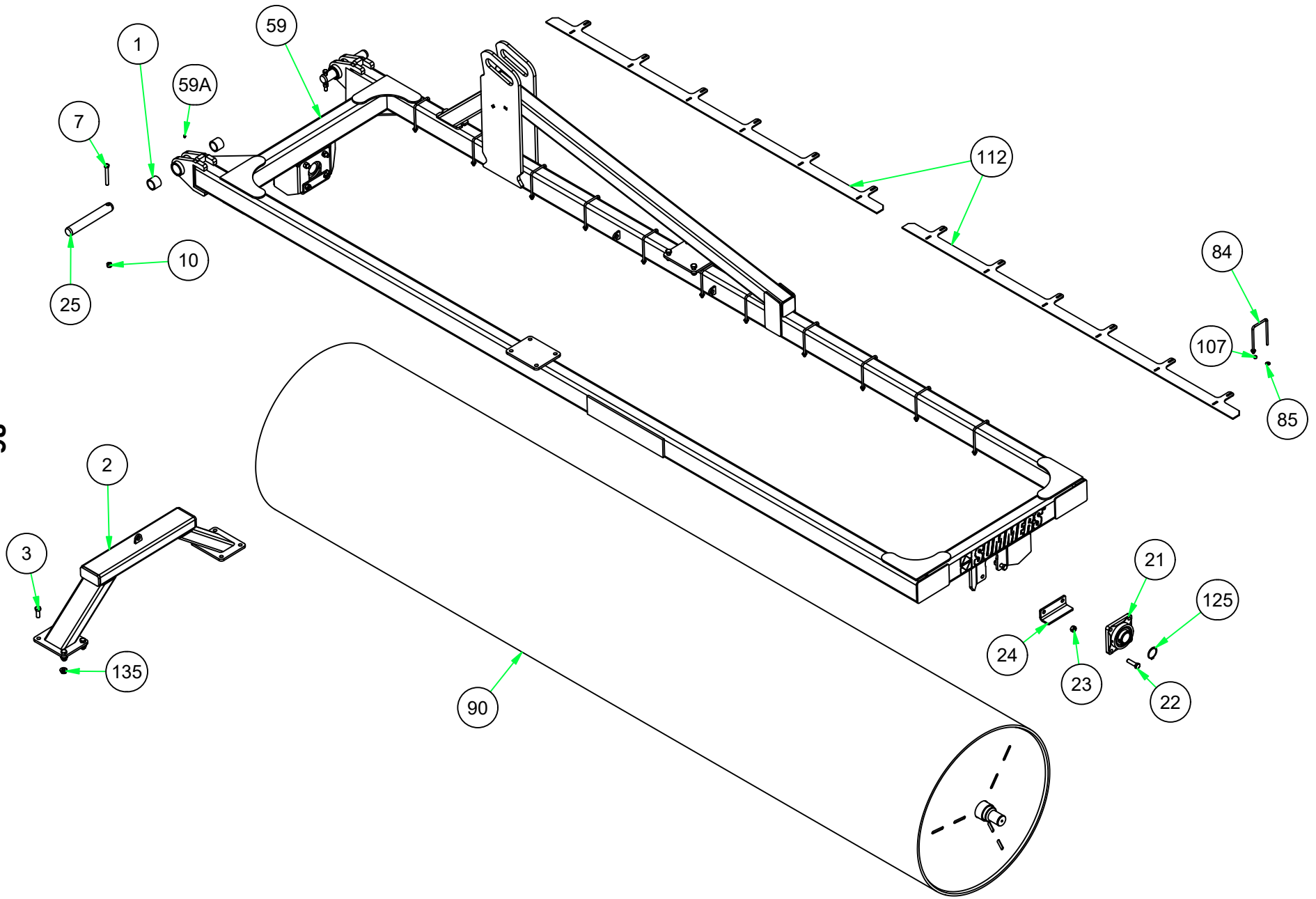


# PARTS

## RIGHT WING

ITEM	PN	DESCRIPTION
1	8X3142	SLEEVEBRNG 2.50X2.0"ID- 2.0"
2	8P4044	ROLLER CROSSMEMBER
3	8X0107	BOLT 3/4-10NC X 2" GR5 YZ
7	8X0095	BOLT 5/8-11NC X 5" GR5 ZDI
10	8X0253	NUT 5/8"-11NC NY-LOCK GR2 YZ
21	8R8010	BEARING 2-1/2"FLNG 4BLT-49/64"
22	8X0111A	BOLT 3/4-10NC X 2-3/4" GR5 ZDI
23	8X0265	NUT 3/4"-10NC CNTRLOCK GR2 YZ
24	8P5080	BEARING RETAINER
25	8P3910	PIN 2 X 13-1/2" HARDENED
58	8P4086P	FRAME WING 50' LR-R PTD
58	8P4081P	FRAME WING 45' LR-R PTD
58	8P4078P	FRAME WING 41' LR-R PTD
58A	8X0721	ZERK 5/16" -24 NF STR YZ
84	8A1157	U-BOLT 3/8 X 4-1/16 X 7" SQ
85	8X0320	WASHER 3/8" (7/16" ID)FLAT ZDI
90	8P4217B	ROLLER 42"OD 17.5' NO PLUG
90	8P4215B	ROLLER 42"OD 15' NO PLUG
90	8P4213B	ROLLER 42"OD 13' NO PLUG
107	8X0202	NUT 3/8"-16NC NY-LOCK GR2 YZ
112	8P7012	SCRAPER 105" WFLR PTD (50')
112	8P7011	SCRAPER 89.75" WFLR PTD (45')
112	8P7013	SCRAPER 79.5" WFLR PTD (41')
125	8R8005	SNAP RING .078"FOR 2-1/2"DIA.
135	8X0262F	NUT 3/4"-10NC TLCK FLNG GRFPLN

36



PARTS



# PARTS

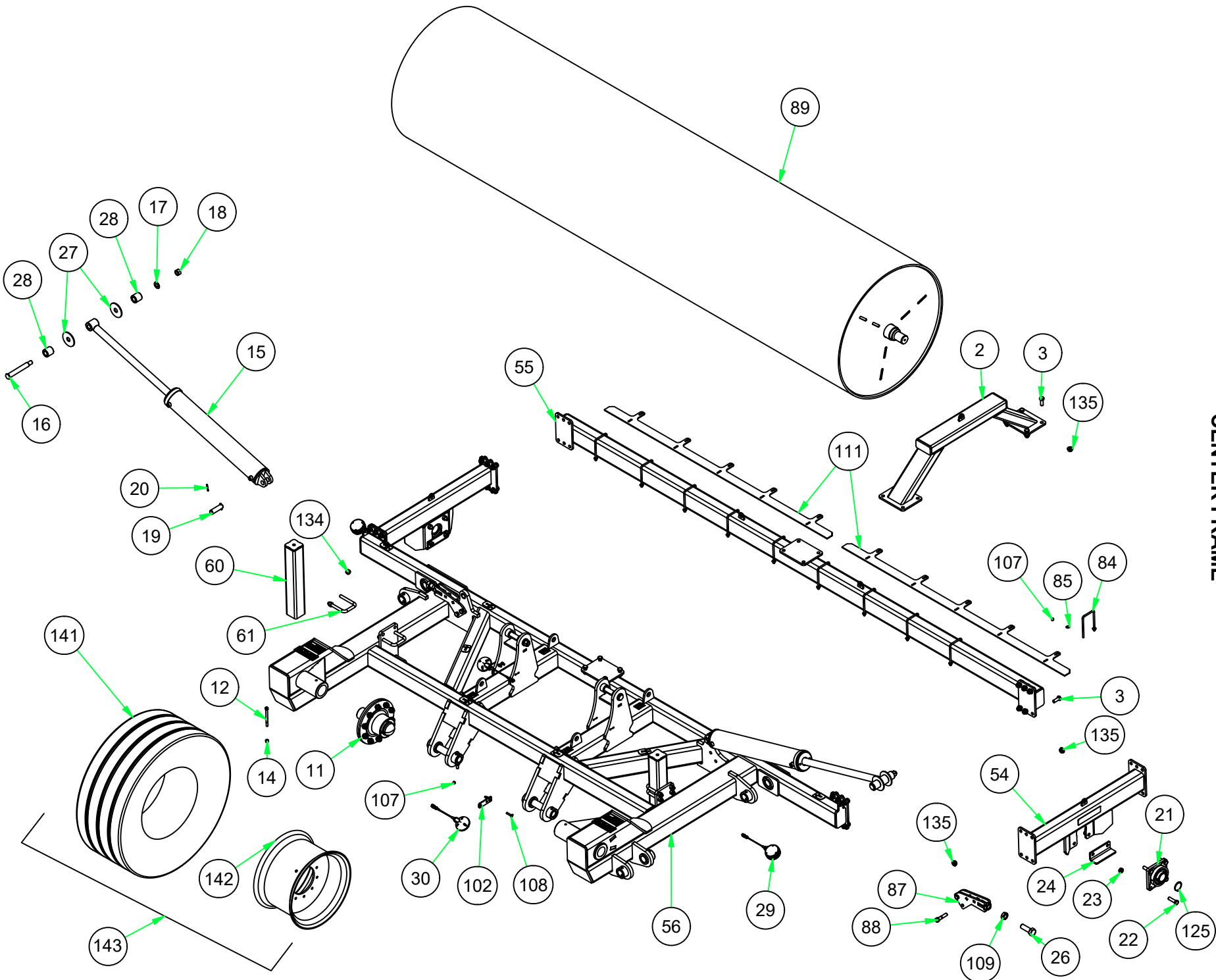
## LEFT WING

ITEM	PN	DESCRIPTION
1	8X3142	SLEEVEBRNG 2.50X2.0"ID- 2.0"
2	8P4044	ROLLER CROSSMEMBER
3	8X0107	BOLT 3/4-10NC X 2" GR5 YZ
7	8X0095	BOLT 5/8-11NC X 5" GR5 ZDI
10	8X0253	NUT 5/8"-11NC NY-LOCK GR2 YZ
21	8R8010	BEARING 2-1/2"FLNG 4BLT-49/64"
22	8X0111A	BOLT 3/4-10NC X 2-3/4" GR5 ZDI
23	8X0265	NUT 3/4"-10NC CNTRLOCK GR2 YZ
24	8P5080	BEARING RETAINER
25	8P3910	PIN 2 X 13-1/2" HARDENED
59	8P4076P	FRAME WING 50' LR-L PTD
59	8P4071P	FRAME WING 45' LR-L PTD
59	8P4068P	FRAME WING 41' LR-L PTD
59A	8X0721	ZERK 5/16" -24 NF STR YZ
84	8A1157	U-BOLT 3/8 X 4-1/16 X 7" SQ
85	8X0320	WASHER 3/8" (7/16" ID)FLAT ZDI
90	8P4217B	ROLLER 42"OD 17.5' NO PLUG
90	8P4215B	ROLLER 42"OD 15' NO PLUG
90	8P4213B	ROLLER 42"OD 13' NO PLUG
107	8X0202	NUT 3/8"-16NC NY-LOCK GR2 YZ
112	8P7012	SCRAPER 105" WFLR PTD (50')
112	8P7011	SCRAPER 89.75" WFLR PTD (45')
112	8P7013	SCRAPER 79.5" WFLR PTD (41')
125	8R8005	SNAP RING .078"FOR 2-1/2"DIA.
135	8X0262F	NUT 3/4"-10NC TLCK FLNG GRFPLN

# PARTS

## CENTER FRAME

38



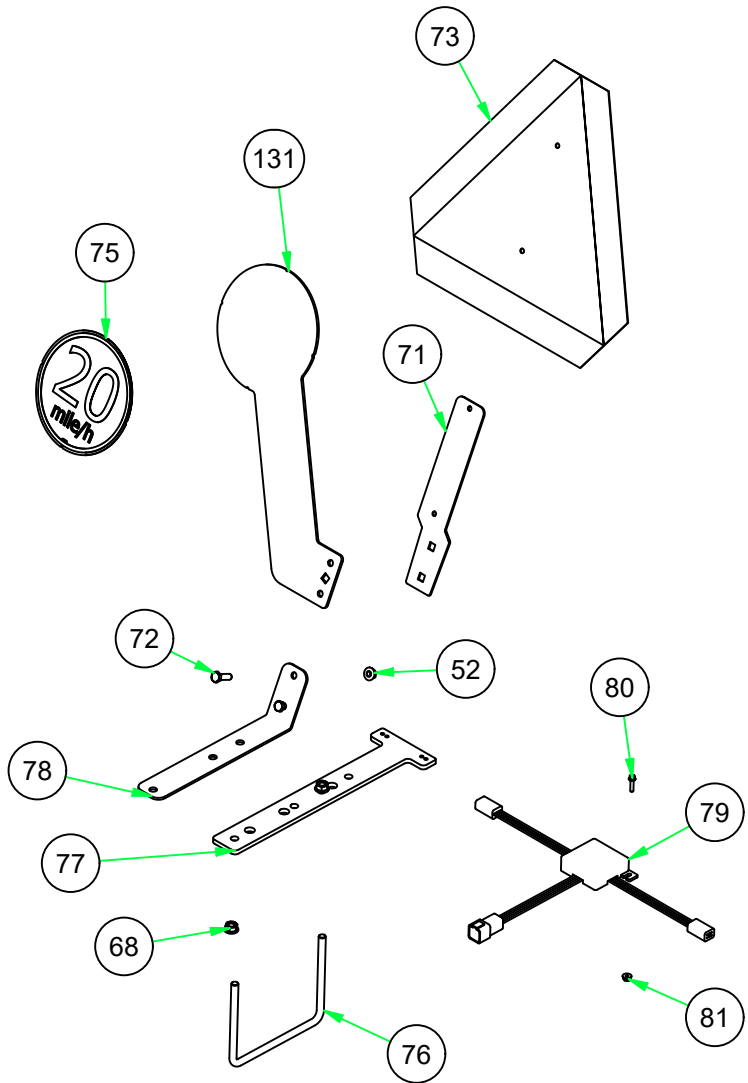
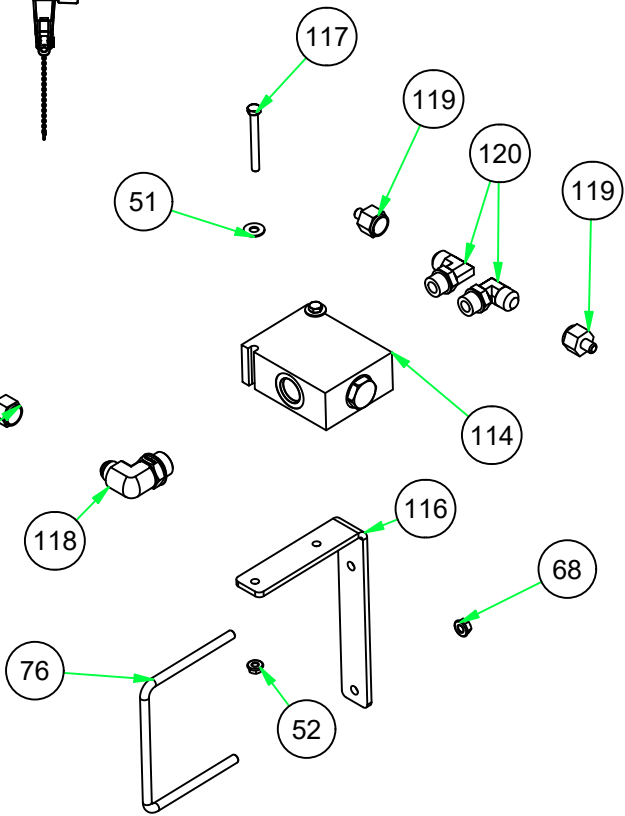
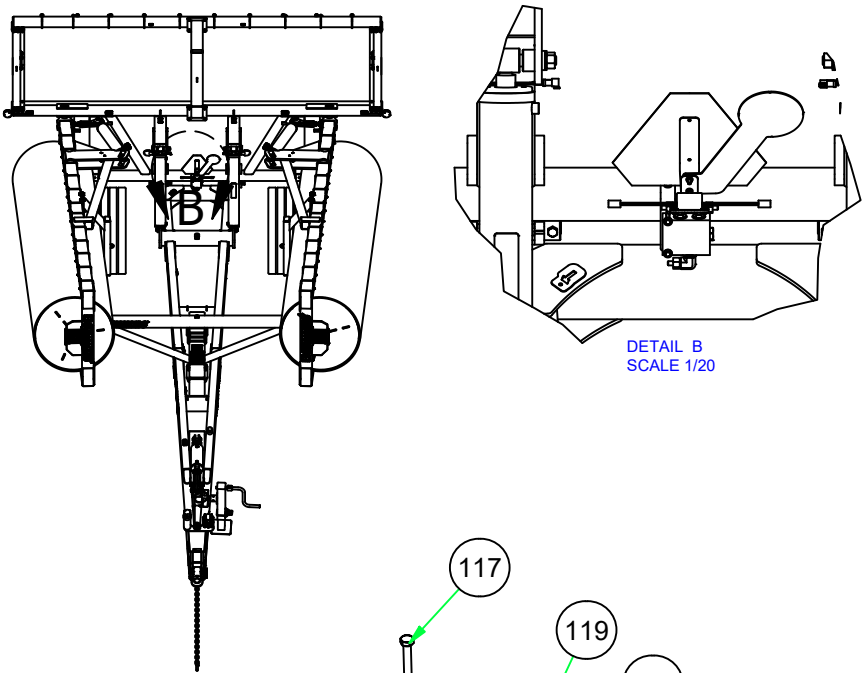
# PARTS

## CENTER FRAME

ITEM	PN	DESCRIPTION
2	8P4044	ROLLER CROSSMEMBER
3	8X0107	BOLT 3/4-10NC X 2" GR5 YZ
11	8K1109	SPINDLE W/H1010 15K
12	8X0075	BOLT 1/2-13NC X 6" GR5 YZ
14	8X0242	NUT 1/2"-13NC NY-LOCK GR2 YZ
15	8C0532	HYD CYL 5" X 32" 3500PSI
15A	8K8660	SEAL KIT 5 X 32 & 36" CTD 89-
16	8T3300	PIVOT BOLT CHSLTRP&WNLFT YZ
17	8X0316	WASHER SAE FLAT 1" ZDI
18	8X0282	NUT 1"-14NF TOPLOCK GR2 ZDI
19	8K9106	PIN 1-1/4 X 4-3/8" HARDENED
20	8D9108	ROLL PIN 1/4 X 2" YLW ZNC
21	8R8010	BEARING 2-1/2"FLNG 4BLT-49/64"
22	8X0111A	BOLT 3/4-10NC X 2-3/4" GR5 ZDI
23	8X0265	NUT 3/4"-10NC CNTRLOCK GR2 YZ
24	8P5080	BEARING RETAINER
26	8X0152	BOLT 1-1/4-7NC X 3.75 FULLTHD
27	8L0252	WASHER 4.5ODX1.28IDX1/4" ZI-DI
28	8P3500	SPACER
29	8K8090B	LIGHT LED AMBER 2WR DTSCH 12-
30	8K8095B	LIGHT LED RED 3WIRE DTSCH 12-
54	8P4043P	CENTER ROLLER MOUNT PTD
55	8P4042P	CENTER ROLLER CROSSTUBE PTD
56	8P4041P	CENTER LANDROLLER PTD
60	8P4045	TRANSPORT ROLLER REST
61	8K5515	U-BOLT 3/4 X 4-1/16 X 6" SQ
84	8A1157	U-BOLT 3/8 X 4-1/16 X 7" SQ
85	8X0320	WASHER 3/8" (7/16" ID)FLAT ZDI
87	8P5022	LANDROLLER WING STOP
88	8X0115	BOLT 3/4-10NC X 3-1/2" GR5 YZ
89	8P4215B	ROLLER 42"OD 15' NO PLUG
102	8P3111	STL 1/4" 1.5"X 5"
107	8X0202	NUT 3/8"-16NC NY-LOCK GR2 YZ
108	8X1120	CRG 3/8-16NC X 2" GR2 ZN
109	8X0283	NUT JAM 1.25"-7NC GR2 ZDI
111	8P7011	SCRAPER 89.75" WFLR PTD
125	8R8005	SNAP RING .078"FOR 2-1/2"DIA.
134	8X0261	NUT NY-LOCK 3/4"-10NC GR2 ZDI
135	8X0262F	NUT 3/4"-10NC TLCK FLNG GRFPLN
141	8K7460	TIRE 425/65R22.5
142	8K7465	WHEEL 22.5 X13" 10 BOLT
143	8K7470	425/65R22.5 ON 22.5X13.0X10WHL

# PARTS

## SMV/FLOW DIVIDER



# PARTS

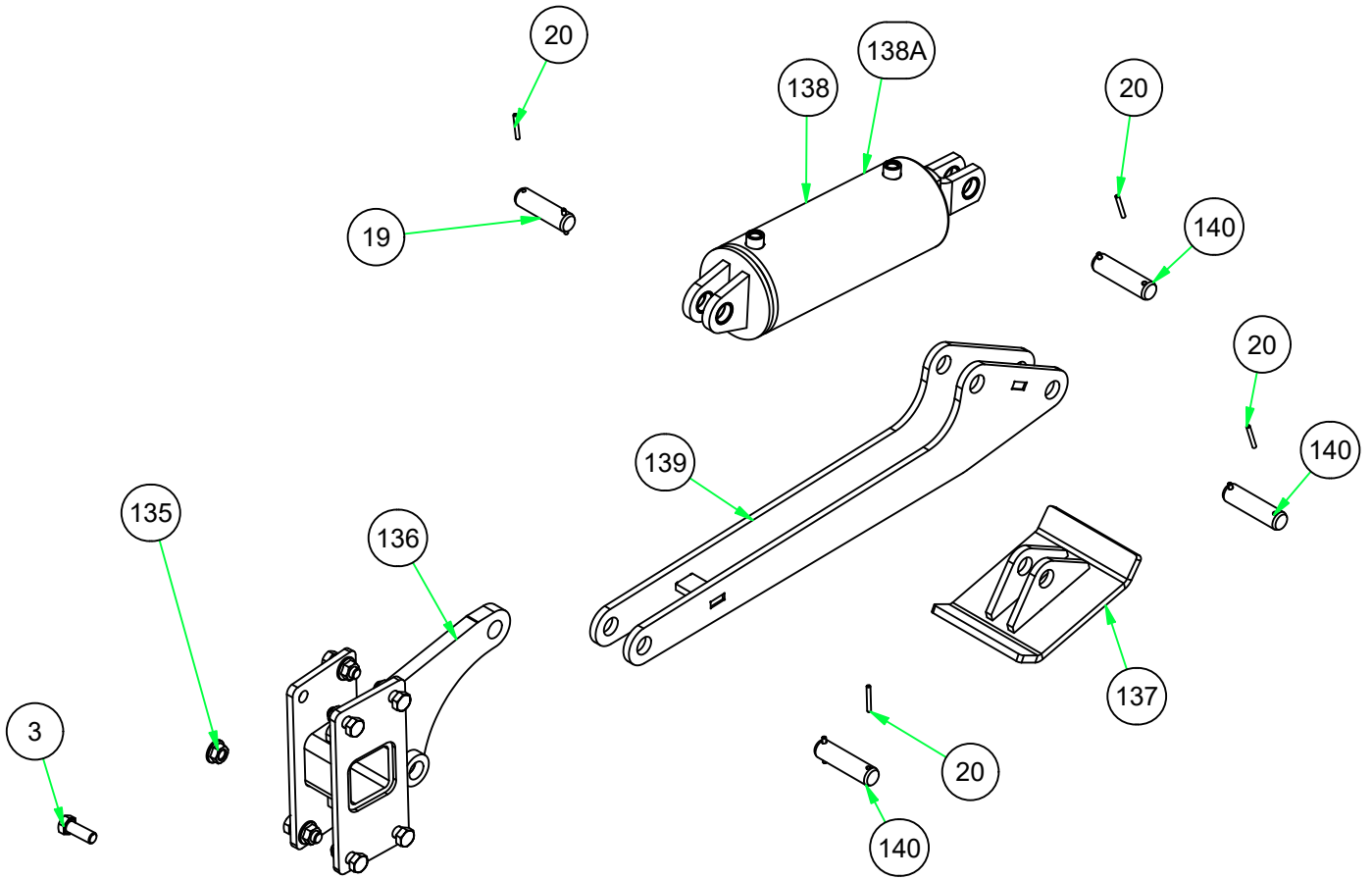
## SMV/FLOW DIVIDER

ITEM	PN	DESCRIPTION
51	8X0329	WASHER 5/16"(3/8" ID)FLAT YZ
52	8X0211	NUT 5/16"-18NC SERFLANG GR2 YZ
68	8X0203	NUT 3/8"-16NC SERFLANG GR2 YZ
73	8S1120	SIGN SLOW MOVING VEHICLE(SMV)
75	8Z2606	DECAL 20 MPH SIS
76	8A1155	U-BOLT 3/8 X 6-1/16 X 5" SQ
77	8X0803	STL .25 MODULE BRACKET 16-
78	8K8203	SMV MOUNT LANDROLLER
79	8K8030A	MODULE AG ENHNCDW/BRAKE6PIN08-
80	8X0170	SCREW 8 X .75" FLANGE HD
81	8X0208	NUT 8-32 HEX YZ SER FLNG
114	8N7035	FLOW DIVIDER 6-24GPM
116	8P6989	FLOW DIVIDER BRACKET
117	8X0024	BOLT 5/16-18NC X 2-1/2" GR5 YZ
118	8J6050	1-1/16" - 12ORB#10JIC(M)90°ADP
119	8J5200	#10 JIC(F) X #6 JIC(M)HEX BUSH
120	8J6030	7/8"-14 ORB X #10 JIC(M)90°ADP
131	8K8300	BRCKT SIS DECAL

# PARTS

---

## HITCH JACK



# PARTS

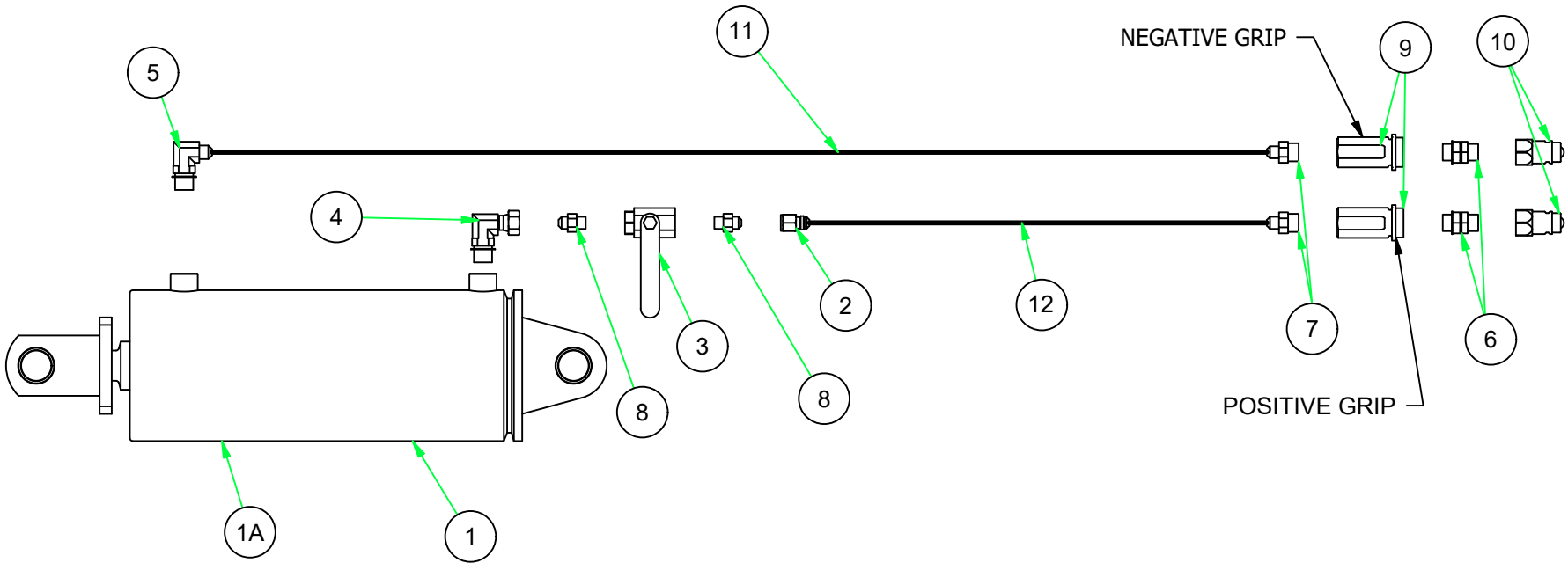
---

## HITCH JACK

ITEM	PN	DESCRIPTION
3	8X0107	BOLT 3/4-10NC X 2" GR5 YZ
19	8K9106	PIN 1-1/4 X 4-3/8" HARDENED
20	8D9108	ROLL PIN 1/4 X 2" YLW ZNC
135	8X0262F	NUT 3/4"-10NC TLCK FLNG GRFPLN
136	8P5032	HYDRAULIC JACK CYLINDER ATTCH
137	8P5033	HYDRAULIC JACK BASE
138	8P0510	HYD CYL 5.5" X 10" 3500PSI
138A	8P0511	SEAL KIT 5.5X10"CTD 8P0510 11-
139	8P5038	HYDRAULIC JACK LIFT ARM
140	8P1985	PIN 1-1/4" X 4.75"

# PARTS

## JACK HYDRAULICS





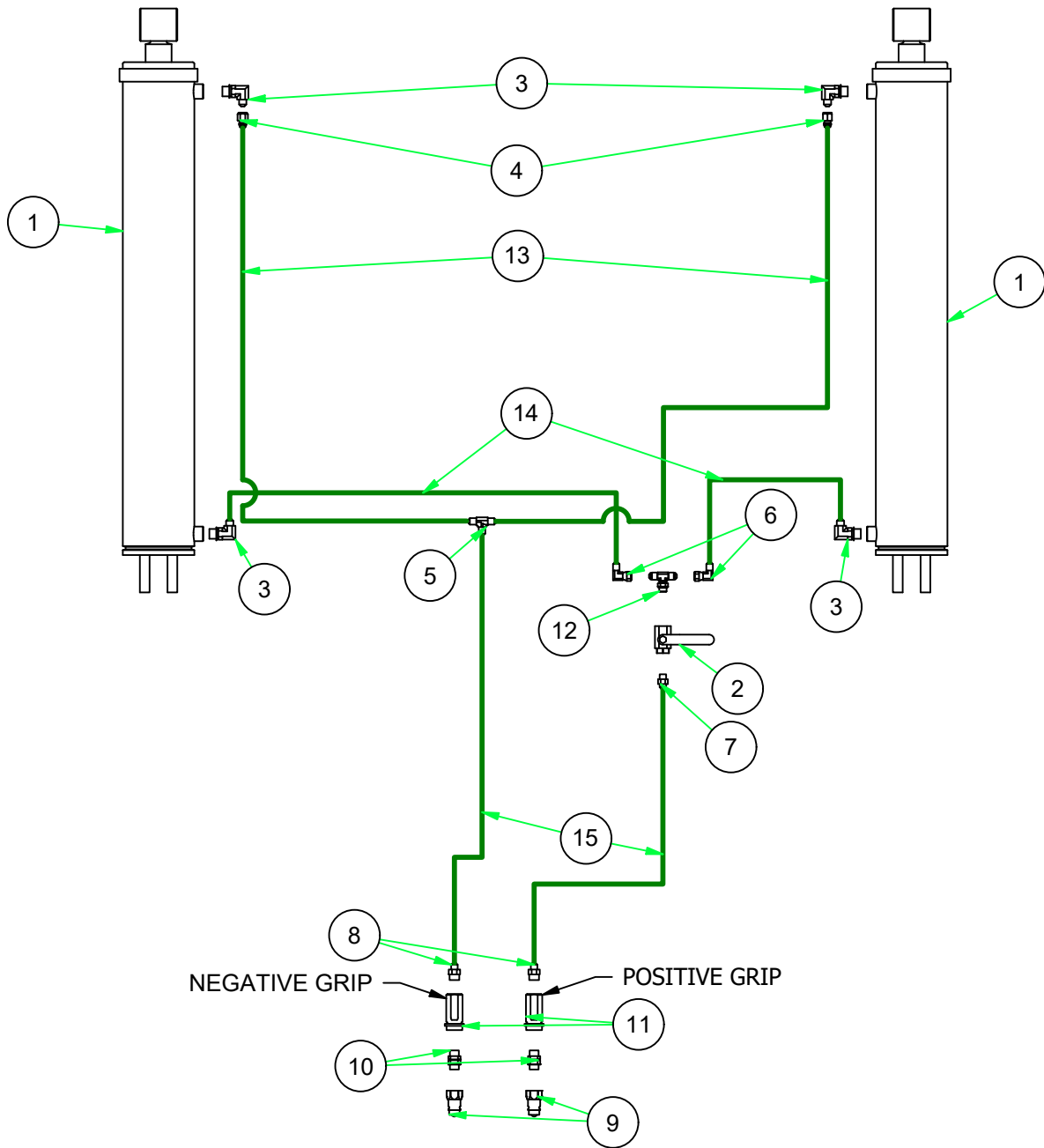
# PARTS

## JACK HYDRAULICS

ITEM	PN	DESCRIPTION
1	8P0510	HYD CYL 5.5" X 10" 3500PSI
1A	8P0511	SEAL KIT 5.5X10"CTD 8P0510 11-
2	8J7216	#6JIC(M)X6JIC(F)1/16"RSTR GOLD
3	8J7000	BALL VALVE HYD 9/16"-18ORB(2X)
4	8J6060	3/4" - 16 ORB X #6 JIC(F) 90°ADP
5	8J6010	3/4"-16 ORB X #6 JIC(M)90°ADP
6	8J5680	3/4"-16 ORB X 3/4"-16ORB UNION
7	8J5510	3/4"-16 ORB X #6 JIC(M) STR
8	8J5500	9/16"-18 ORB X #6 JIC(M) STR
9	8D3500B	PAIR OF QD GRIPS BLK
10	8D3212	MALE TIP 3/4"-16 ORB PIONEER
11	8N3136	3/8X 136"HYD HOSE #6FJX3000PSI
12	8N3124	3/8X 124"HYD HOSE #6FJX3000PSI

# PARTS

## TILT HYDRAULICS



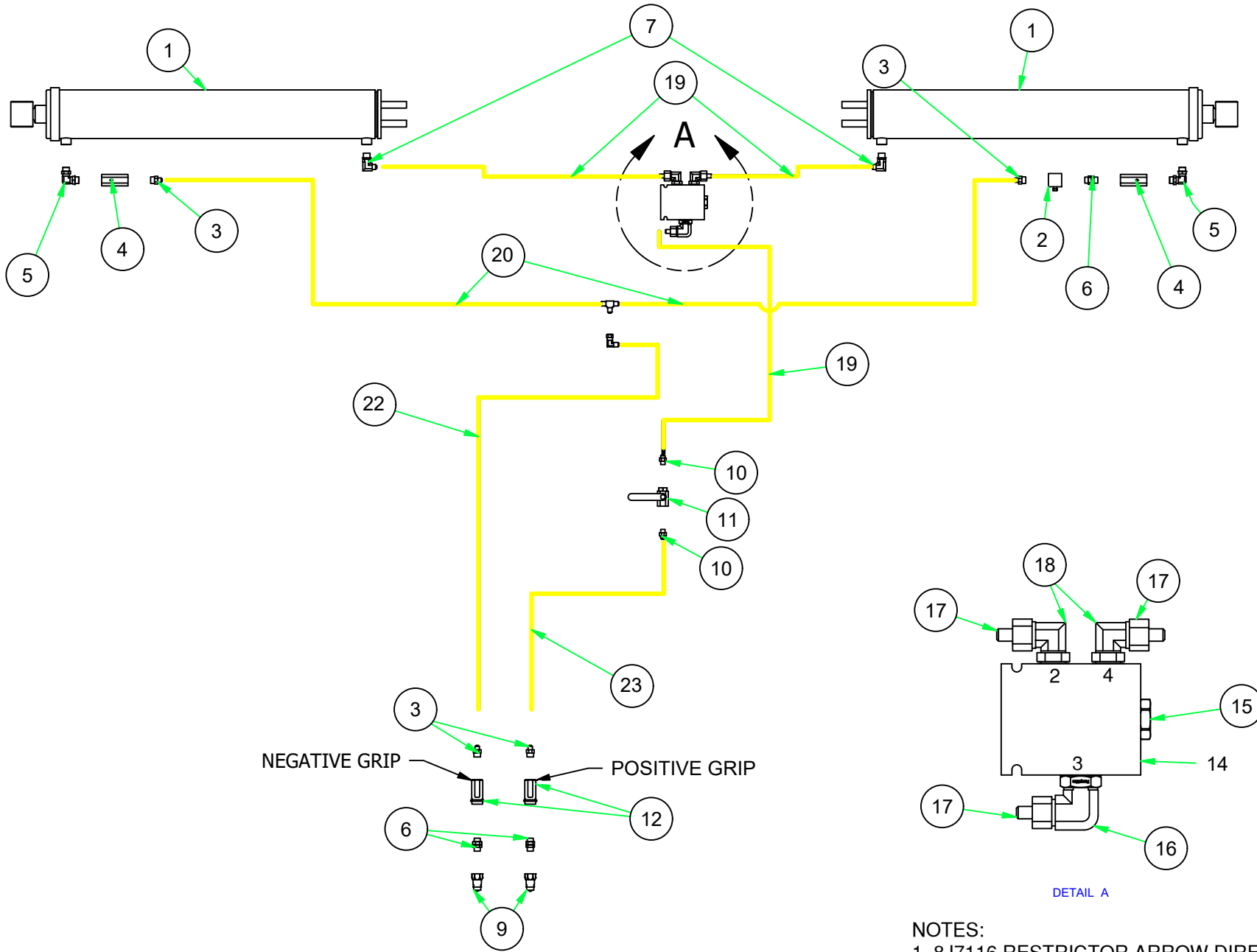
# PARTS

## TILT HYDRAULICS

ITEM	PN	DESCRIPTION
1	8C0532	HYD CYL 5" X 32" 3500PSI
2	8J7000	BALL VALVE HYD 9/16"-18ORB(2X)
3	8J6010	3/4"-16 ORB X #6 JIC(M)90*ADP
4	8J7216	#6JIC(M)X6JIC(F)1/16"RSTR GOLD
5	8J5300	TEE #6 JIC (MALE) 3X
6	8J5700	#6 JIC(F-SW) X #6 JIC(M)90*ADP
7	8J5500	9/16"-18 ORB X #6 JIC(M) STR
8	8J5510	3/4"-16 ORB X #6 JIC(M) STR
9	8D3212	MALE TIP 3/4"-16 ORB PIONEER
10	8J5680	3/4"-16 ORB X 3/4"-16ORB UNION
11	8D3500G	PAIR OF QDH-8SAE GRIPS GRN
12	8J6002	9/16"-18ORB X #6 JIC(M)BRNCH T
13	8N3048	3/8X 48"HYD HOSE #6FJX3000PSI
14	8N3028	3/8X 28"HYD HOSE #6FJX3000PSI
15	8N3288	3/8X 288"HYD HOSE #6FJX3000PSI

# PARTS

## WING FOLD HYDRAULICS



NOTES:  
1. 8J7116 RESTRICTOR ARROW DIRECTION  
MUST BE POINTED INTO THE CYLINDER

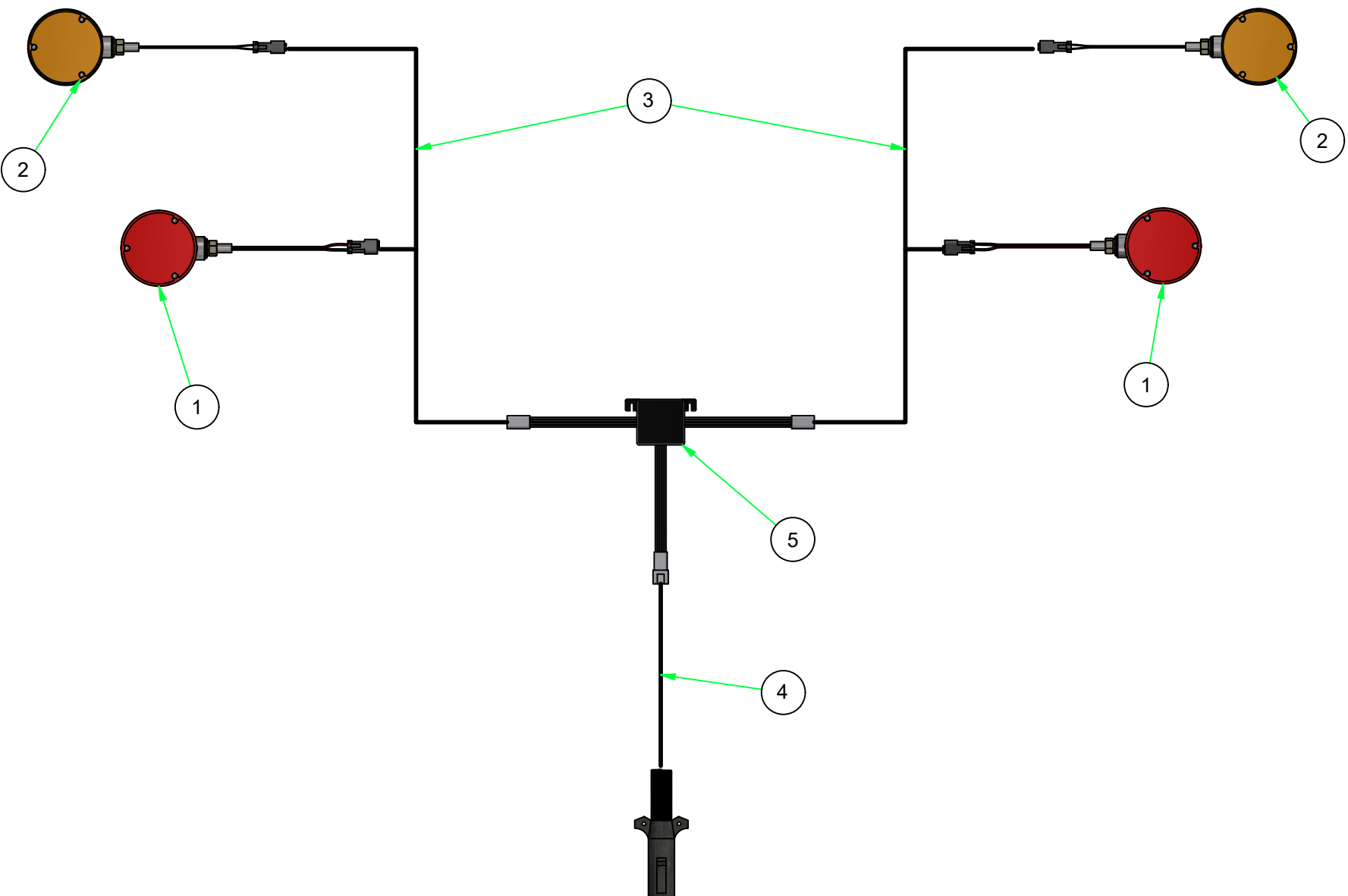
# PARTS

## WING FOLD HYDRAULICS

ITEM	PN	DESCRIPTION
1	8C0532	HYD CYL 5" X 32" 3500PSI
2	8J7040	THERMAL RELIEF MANIFLD 4000PSI
3	8J5510	3/4"-16 ORB X #6 JIC(M) STR
4	8J7116	3/4"-16 ORB(2X)1WAY 1/16"RESTR
5	8J5690	3/4-16X3/4-16 ORB M-SW90*UNION
6	8J5680	3/4"-16 ORB X 3/4"-16ORB UNION
7	8J6010	3/4"-16 ORB X #6 JIC(M)90*ADP
8	8J5300	TEE #6 JIC (MALE) 3X
9	8D3212	MALE TIP 3/4"-16 ORB PIONEER
10	8J5500	9/16"-18 ORB X #6 JIC(M) STR
11	8J7000	BALL VALVE HYD 9/16"-18ORB(2X)
12	8D3500Y	PAIR OF QDH-8SAE GRIPS YEL
13	8J5700	#6 JIC(F-SW) X #6 JIC(M)90*ADP
14	8N7035	FLOW DIVIDER 6-24GPM
15	8N7036	FLOW DIVIDER CARTRIDGE 6-24GPM
16	8J6050	1-1/16" - 12ORB#10JIC(M)90*ADP
17	8J5200	#10 JIC(F) X #6 JIC(M)HEX BUSH
18	8J6030	7/8"-14 ORB X #10 JIC(M)90°ADP
19	8N3070	3/8X 70"HYD HOSE #6FJX3000PSI
20	8N3096	3/8X 96"HYD HOSE #6FJX3000PSI
21	8N3360	3/8X 360"HYD HOSE #6FJX3000PSI
22	8N3288	3/8X 288"HYD HOSE #6FJX3000PSI

# PARTS

## LIGHT HARNESS



# PARTS

---

## LIGHT HARNESS

ITEM	PN	DESCRIPTION
1	8K8095B	LIGHT LED RED 3WIRE DTSCH 12-
2	8K8090B	LIGHT LED AMBER 2WR DTSCH 12-
3	8K8083	EXT HARNESS WFLR
4	8K8070B	MAIN HRNSS 7PN 32' W/BRAKE 09-
5	8K8030A	MODULE AG ENHNCDW/BRAKE6PIN08-

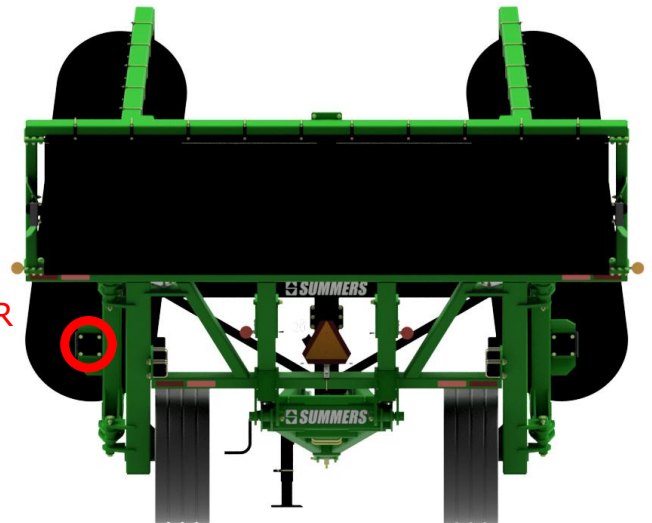
# PARTS

## INSTALLATION AND OPERATION INSTRUCTIONS FOR 8K1800 ACRE METER

1. Clean threads in end of drum shaft. The threads are 1/2"-20 UNF.
2. Recommended location is Left wing towards the center. This allows the inspection of the Acre Meter while machine is in transport.
3. Attach Acre Meter with 1/2" lock washer and tighten to 18-22 lb-ft.
4. Acre Meter reading must be multiplied by the conversion factor for actual acres. Conversion chart below FOR MACHINES WITH 42 INCH DRUMS.
5. CLEANING - DO NOT use solvents, paint thinner or mineral spirits to clean Acre Meter cover. USE a mild detergent and water to clean the Acre Meter cover.
6. DO NOT attempt to open Acre Meter! Attempting to do so can cause injury and may destroy Acre Meter.



ACRE METER  
LOCATION



ACRE METER CONVERSION CHART				
MACHINE WIDTH	FORMULA			
41	READING X	3.6	=	ACRES
45	READING X	4	=	ACRES
50	READING X	4.45	=	ACRES



# NOTES

---

