

Land Rollers / Coil Packers



Land Rollers / Coil Packers



SuperRoller | RH SERIES / RT SERIES

Coil Packer



Field Tested TOUGH!

It's more than a slogan. Field Tested Tough is the entire philosophy behind Summers Manufacturing. Every product from our line of tillage equipment, sprayers, land rollers, rock pickers and mounted attachments has been engineered for maximum performance...and then pushed to the limit in the field. Only after our equipment has passed the toughest tests and proven its longevity does it deserve to have the **SUMMERS** name on it.

The Logic Behind Land Rolling

Rocks, root balls and other solid objects can cause expensive damage and wear to combines when harvesting low-to-the-ground crops. That's why we recommend using a land roller soon after planting. It pushes those objects into the ground, so they aren't picked up later by the swather or combine header.

Land rollers also firm the soil (without compacting it) to maximize seed-to-soil contact. In our side-by-side field tests, we've found that land rolling results in quicker emergence and **increased yields of one to two bushels per acre** in soybeans. Additionally, land rollers can be used in the fall after harvest to fracture tough residue.

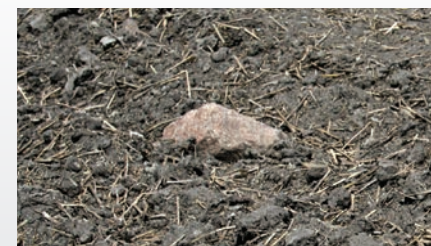
Coil packers are similar to land rollers, but they deliver less pressure to the ground, and the coils also provide light tillage action by sizing dirt clods. These products leave a herringbone pattern in the soil, compared with the smooth finish produced by standard land rollers.

SuperRoller

RH SERIES / RT SERIES



Coil Packer



Rock Before Rolling



Rock After Rolling

SuperRoller

People buy land rollers to increase their yields and reduce costly combine repairs. They buy Summers land rollers to maximize performance and reliability. Not to mention, we have a wide selection of rollers available with a variety of widths, drum sizes and unfolding options to meet your needs.



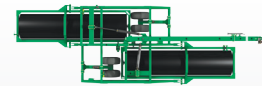
Rigid Frame

The Field Tested Tough frames on Summers land rollers are designed to outlast any other product on the market.

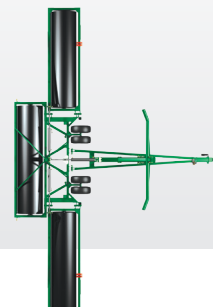
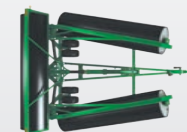
Hydraulic Folding Rollers

The **RH Series** allows the operator to hydraulically fold and unfold the land roller without backing up the tractor. On three-roller units the end sections fold up and forward, and on two-roller models a hydraulic hitch rotates both rollers from transport to field position. RH Series models include hardened, 2-inch-diameter pivot pins for durability.

Two Section



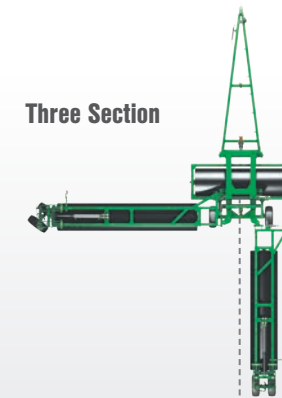
Three Section



Trail-Type Rollers

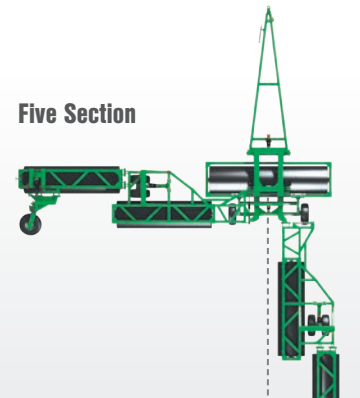
RT series rollers require the operator to drive in reverse a short distance to unfold the units into field position. However, they have a unique **auto-fold system with steerable wheels** to make this process quick and easy. These models have 3-1/2-inch hardened pins to securely lock the wings into field position.

Three Section



Field Transport

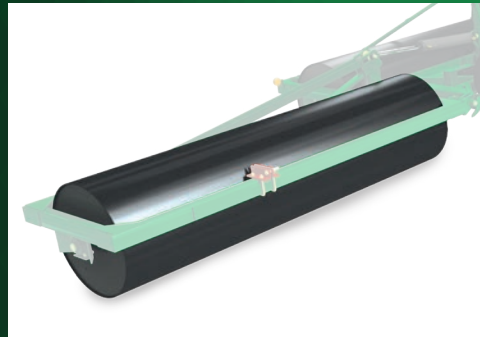
Five Section



Field Transport



FEATURES & BENEFITS



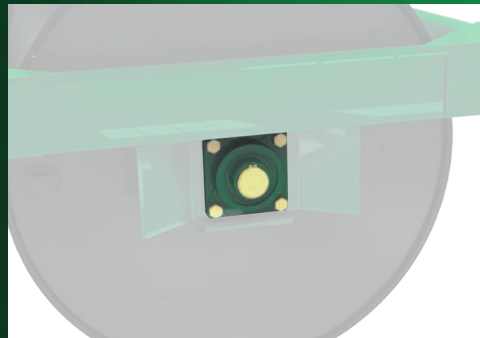
Heavy Duty Drums

Summers land rollers are available with both 36- and 42-inch-diameter drums. For extreme durability and proper weight, the 36-inch drums have 17/32-inch wall thickness, and 42-inch drums have 9/16-inch wall thickness.



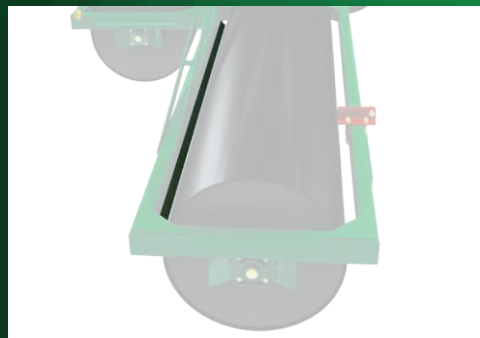
Floating Hitch

RT Series rollers include a floating hitch, which helps the units follow ground contours closely.



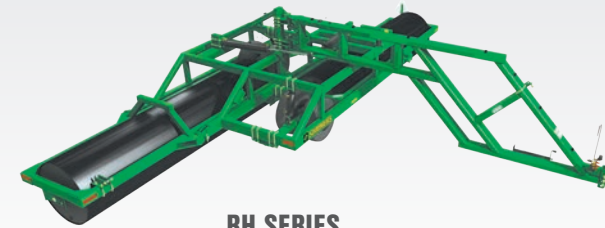
Oversized Bearings

The rollers are equipped with 3-1/2-inch 1045 cold-rolled steel shafts, machined down to accommodate 2-1/2-inch relubricable bearings with ductile cast housings, providing long-lasting performance.



Mud Scrapers

Each roller features a mud scraper to keep it clean and functioning properly.



RH SERIES
HYDRAULIC FOLDING



RT SERIES
TRAIL TYPE

SERIES	RH Series				RT Series					
	30'	41'	45'	50'	41'	46'	53'	62'	84'	84'
Machine Width	30'	41'	45'	50'	41'	46'	53'	62'	84'	84'
Transport Width	11'	17'-2"	17'-2"	16'-10"	12'-6"	12'-6"	12'-6"	17'-3"	17'-3"	17'-3"
Transport Height	8'-6"	14'-2"	15'-2"	16'	6'	6'	6'	6'	6'	6'
Transport Length	35'	26'-6"	26'-6"	26'-3"	41'-6"	44'	47'-6"	56'-6"	68'-6"	68'-6"
Estimated Weight (lbs)	18,600	20,500	21,000	20,000	23,880	24,900	26,400	36,500	38,500	43,000
Number of Rollers	2	3	3	3	3	3	3	5	5	5
Roller Diameter	42"	42"	42"	36"	42"	42"	42"	42"	36"	42"
Roller Wall Thickness	9/16"	9/16"	9/16"	17/32"	9/16"	9/16"	9/16"	9/16"	17/32"	9/16"
Tractor Horsepower*	125-180	150-180	160-190	160-190	150-180	160-190	180-210	190-250	200-425	200-425
Minimum Tractor Weight (lbs)*	15,000	16,000	16,000	16,000	18,000	19,000	20,000	25,000	35,000	35,000
Approx. Transport Tongue Weight (lbs)	1,000	2,000	2,000	2,200	1,800	1,750	1,700	1,200	1,200	1,200

*The ability to safely operate a land roller is determined by both tractor horsepower and weight

Acre Meter

Keep track of how many acres you roll by having an acre meter installed over one of the side bearings.



OPTIONS

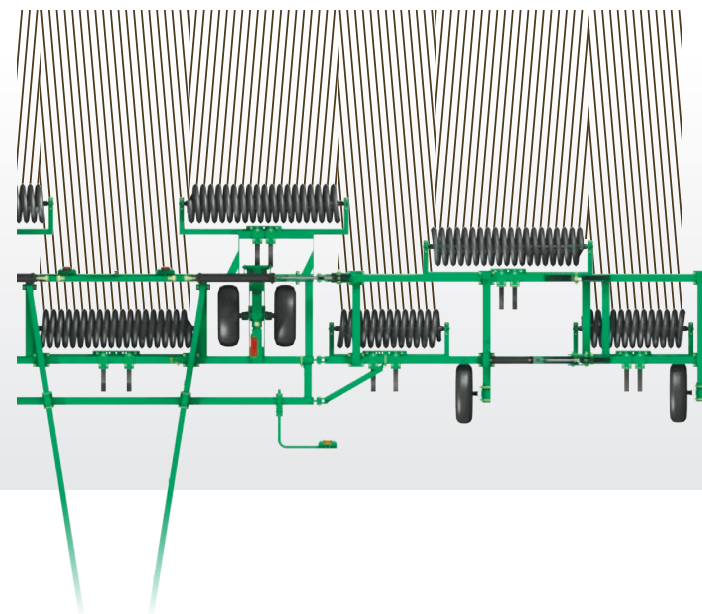
Coil Packer

This versatile piece of equipment can be used behind seeders to firm the soil, increasing seed-to-soil contact. It can also be used behind tillage implements or by itself as a minimum tillage tool. The coil packer leaves a unique herringbone pattern on the surface that reduces your erosion concerns, while raising your yields.



Herringbone Soil Pattern

Coil packers leave a herringbone pattern in the soil. This helps reduce erosion concerns, compared with the smooth finish produced by standard land rollers.



Hydraulic Folding

Both three- and five-section units have hydraulically folding wings for efficient transport.

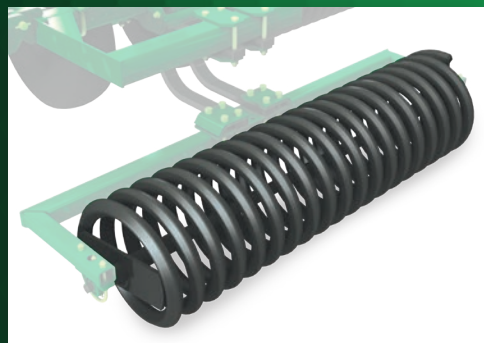


FEATURES & BENEFITS



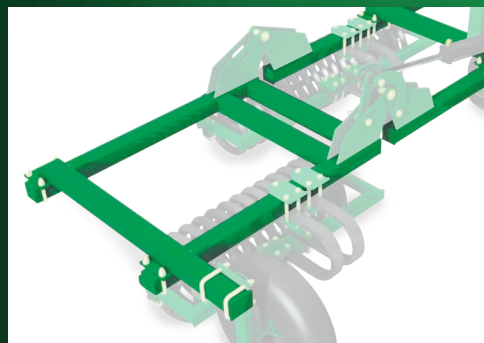
Super-Flex™ C-Shanks

The coil sections are independently spring-mounted with Super-Flex C-Shanks. This patented system helps transfer weight from the wheels to the coils, while allowing them to follow ground contours.



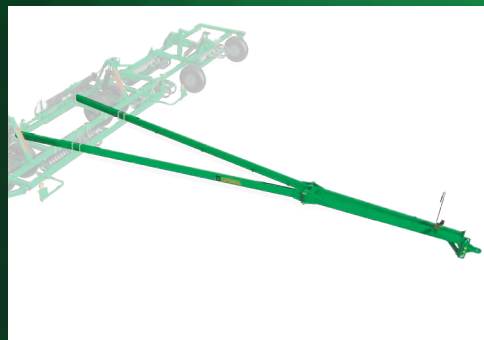
Packing Coils

The 1-3/4-inch coils apply 150 pounds of pressure per foot to size clumps and firm the seedbed without compacting the soil. They also leave a herringbone pattern on the surface that helps prevent erosion.



Heavy Duty Frame

The 4-inch-by-4-inch steel tube frame holds up to tough use.



Extra Long Hitch

The extra long hitch allows the Coil Packer to make easy turns behind air seeders or tillage implements of the same width.



SERIES	PD5015	PD5035					PD5030				
Machine Width	14'	22'	24'	26'	28'	30'	26'	28'	30'	32'	34'
Transport Width	14'-11"	14'-11"	14'-11"	14'-11"	14'-11"	14'-11"	19'	19'	19'	19'	19'
Transport Height	6'-10"	10'	11'	12'-4"	13'	14'	8'-4"	9'-4"	10'-4"	11'-4"	12'-4"
Estimated Weight (lbs)	4,469	6,749	6,973	7,399	7,617	8,355	7,550	7,780	8,150	8,370	9,380
Number of Sections	1	3	3	3	3	3	3	3	3	3	3
Number of Coils	3	5	5	5	5	7	5	5	5	5	7
Tractor Horsepower	13-25	20-41	22-44	23-47	25-50	27-54	24-48	26-51	27-55	29-59	32-62

SERIES	PD5030			PD5050							
Machine Width	36'-38'	40'-42'	44'	46'	48'	50'	52'	54'	56'	58'-60'	62'
Transport Width	19'	19'	19'	19'	19'	19'	19'	19'	19'	19'	19'
Transport Height	14'-4"	16'-4"	17'-4"	14'-4"	14'-4"	14'-4"	16'-4"	16'-4"	16'-4"	16'-4"	16'-4"
Estimated Weight (lbs)	9,830	10,450	11,540	12,910	13,140	13,410	15,460	15,700	15,920	17,300	17,550
Number of Sections	3	3	3	5	5	5	5	5	5	5	5
Number of Coils	7	7	9	9	9	9	11	11	11	13	13
Tractor Horsepower	34-70	38-77	40-81	42-85	44-88	45-92	48-96	50-99	52-103	55-110	57-114



See *Field Tested TOUGH* in action!

www.summersmfg.com



Tillage



S-Tine Cultivators/Harrows



Sprayers



Land Rollers/Coil Packers



Rock Pickers



Mounted Attachments



Summers Manufacturing Inc.
103 Summers St NW
Devils Lake, ND 58301

T: 800-732-4392
www.summersmfg.com

Find us on
 Facebook
facebook.com/SummersMfg

YouTube
youtube.com/SummersManufacturing

Contact your dealer today!