

SUMMERS®

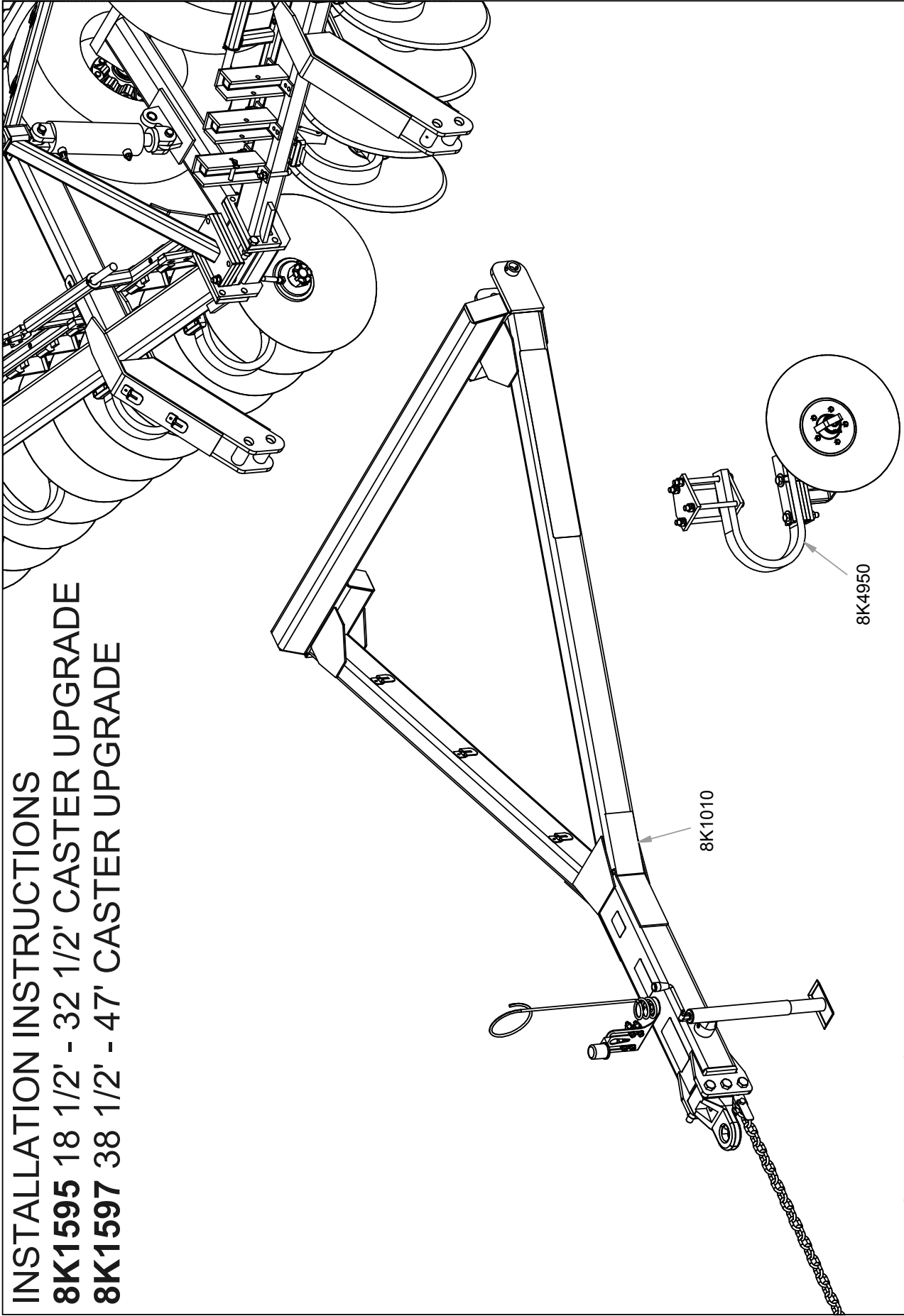
**DIAMOND DISK
2510 DT
CASTER UPGRADE
8K1600**

SUMMERS MANUFACTURING CO., INC.
WEB SITE: www.summersmfg.com

MADDOCK, NORTH DAKOTA 58348
DEVILS LAKE, NORTH DAKOTA 58301

(701) 438-2855
(701) 662-5391

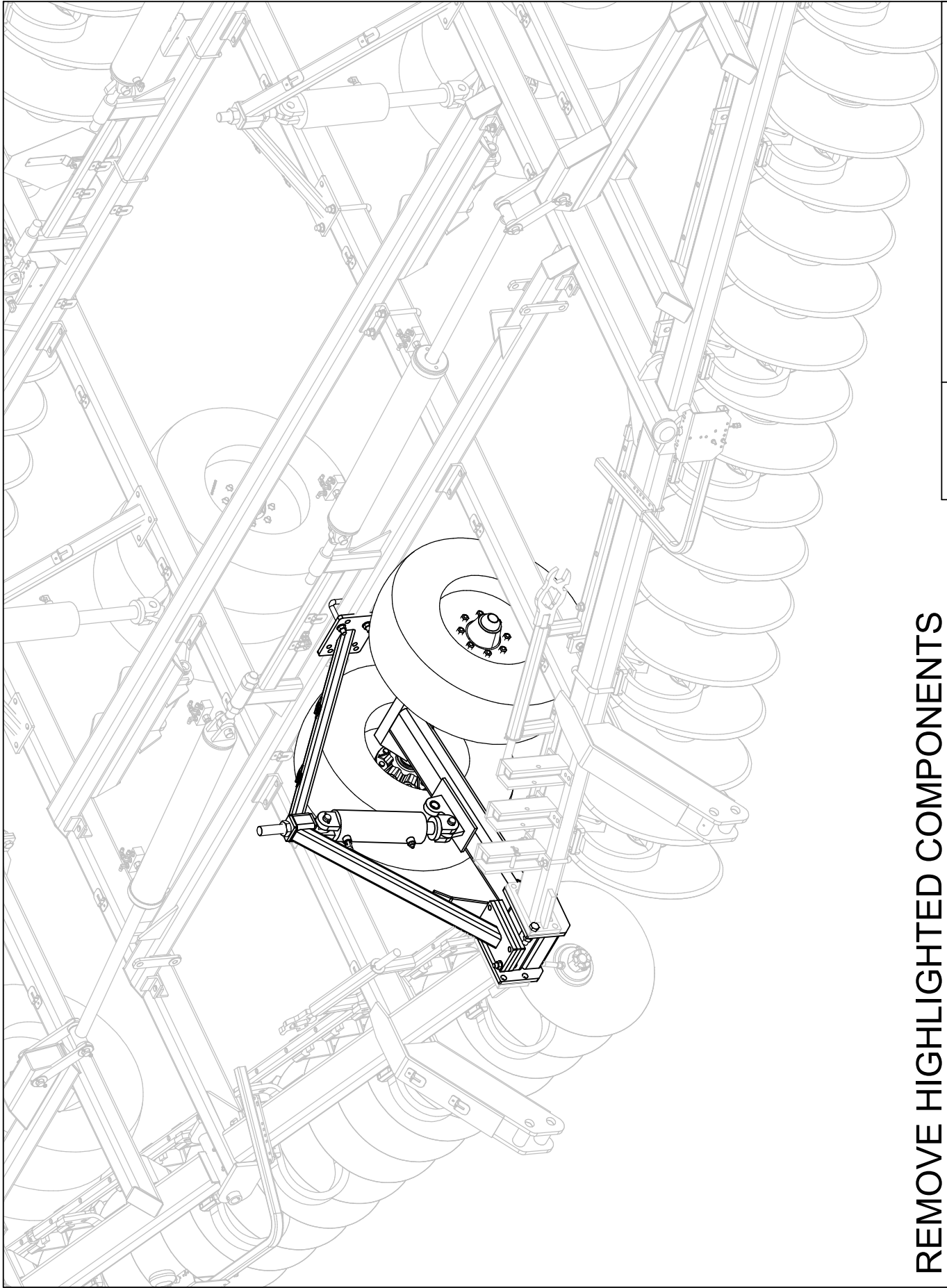
INSTALLATION INSTRUCTIONS
8K1595 18 1/2' - 32 1/2' CASTER UPGRADE
8K1597 38 1/2' - 47' CASTER UPGRADE



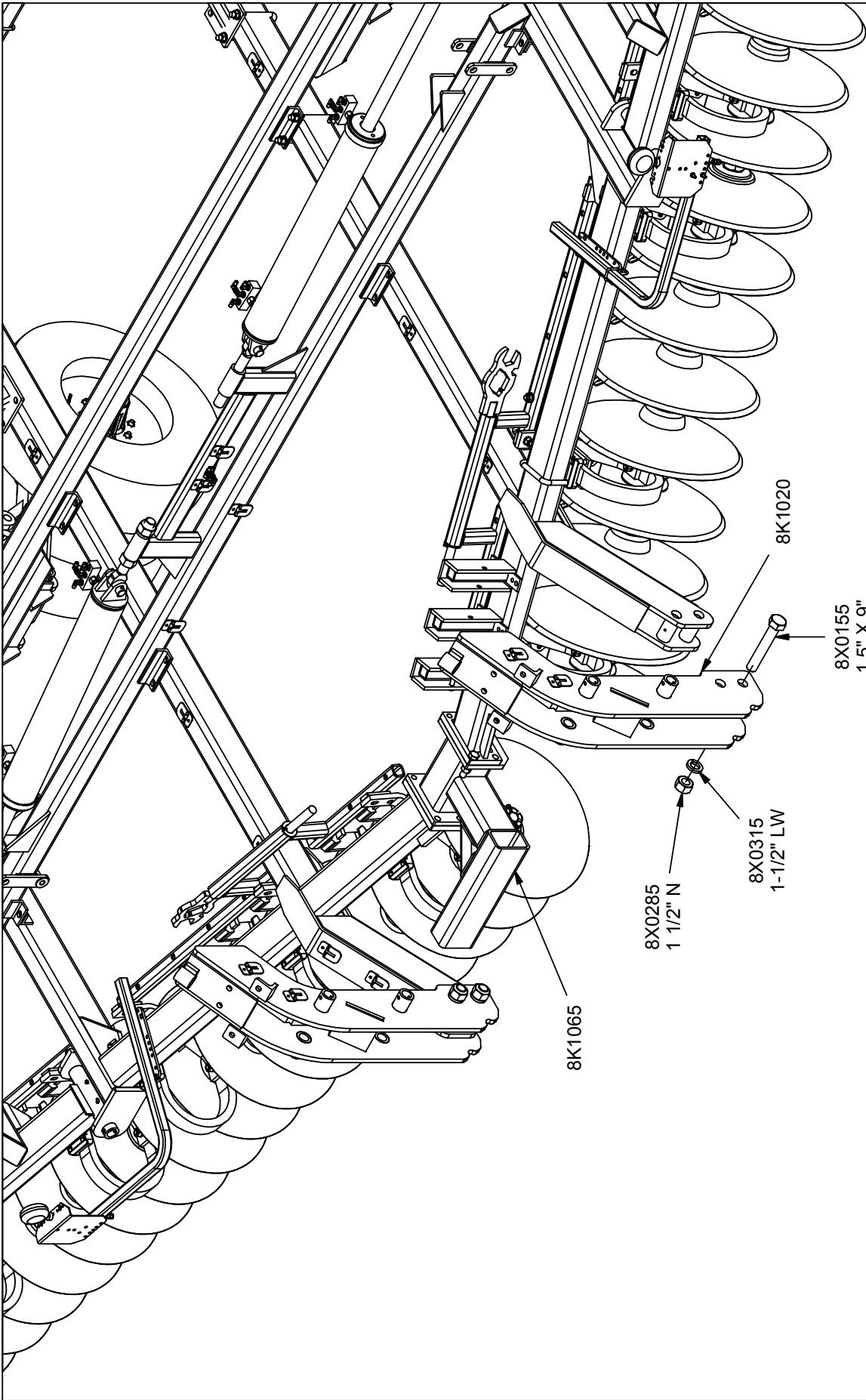
REMOVE HITCH AND
8K4950 DISK ASSEMBLY

8/1/2013

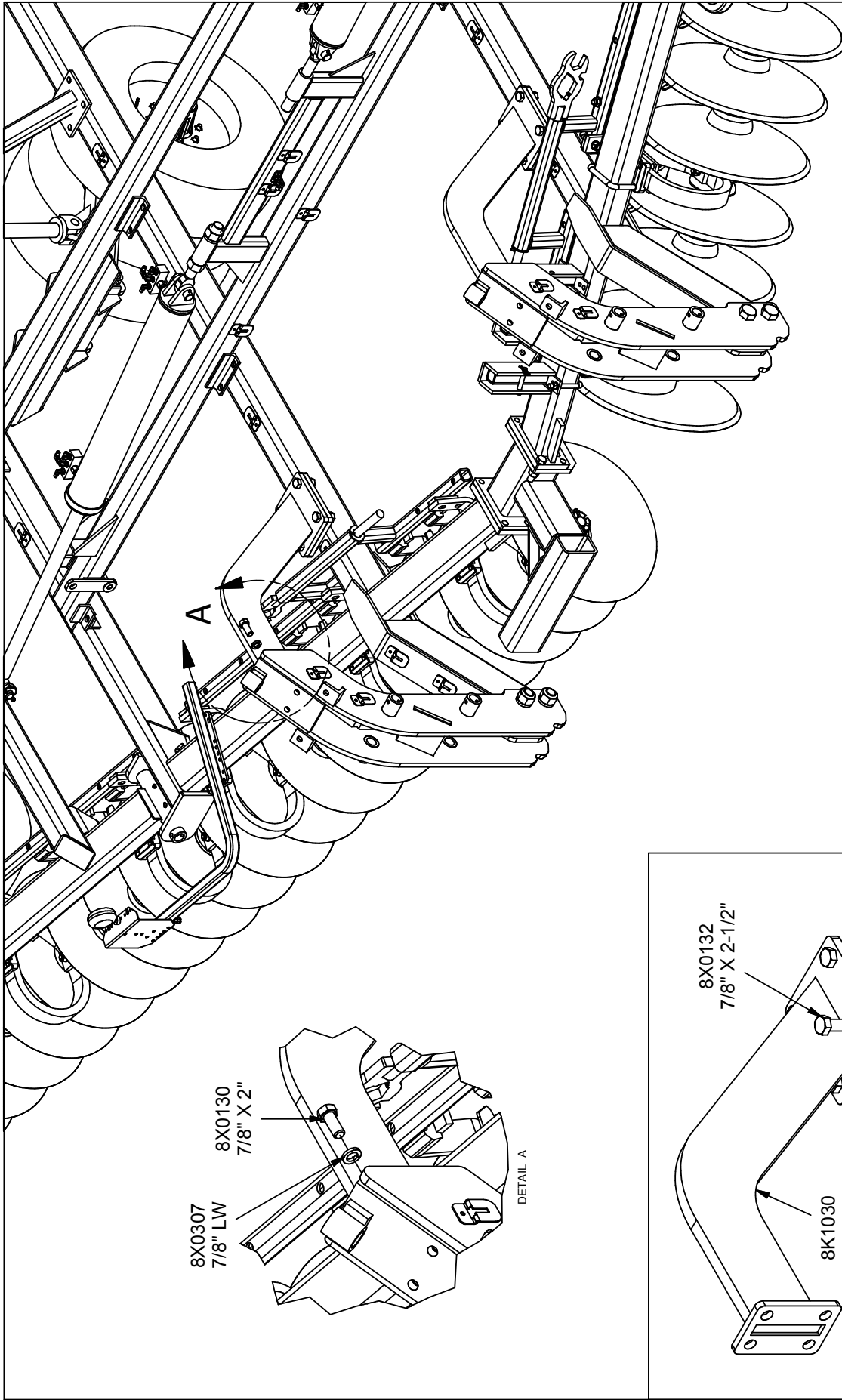
9K4727.iam/HITCH REMOVAL



REMOVE HIGHLIGHTED COMPONENTS



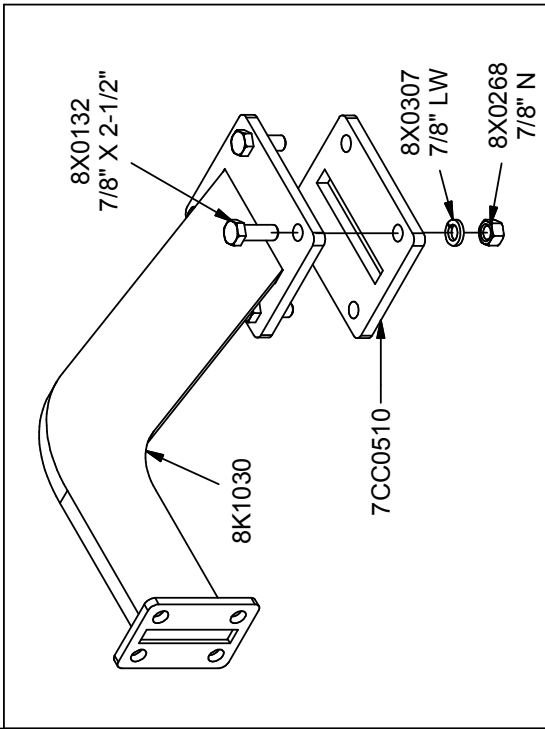
**INSTALL NEW SPLICE TUBE (8K1065) AS SHOWN.
INSTALL HITCH TOWERS (8K1020) WITH 1.5" BOLTS.**



8X0307
7/8" LW

8X0130
7/8" X 2"

DETAIL A



8X0132
7/8" X 2-1/2"

8X0307
7/8" LW

8X0268
7/8" N

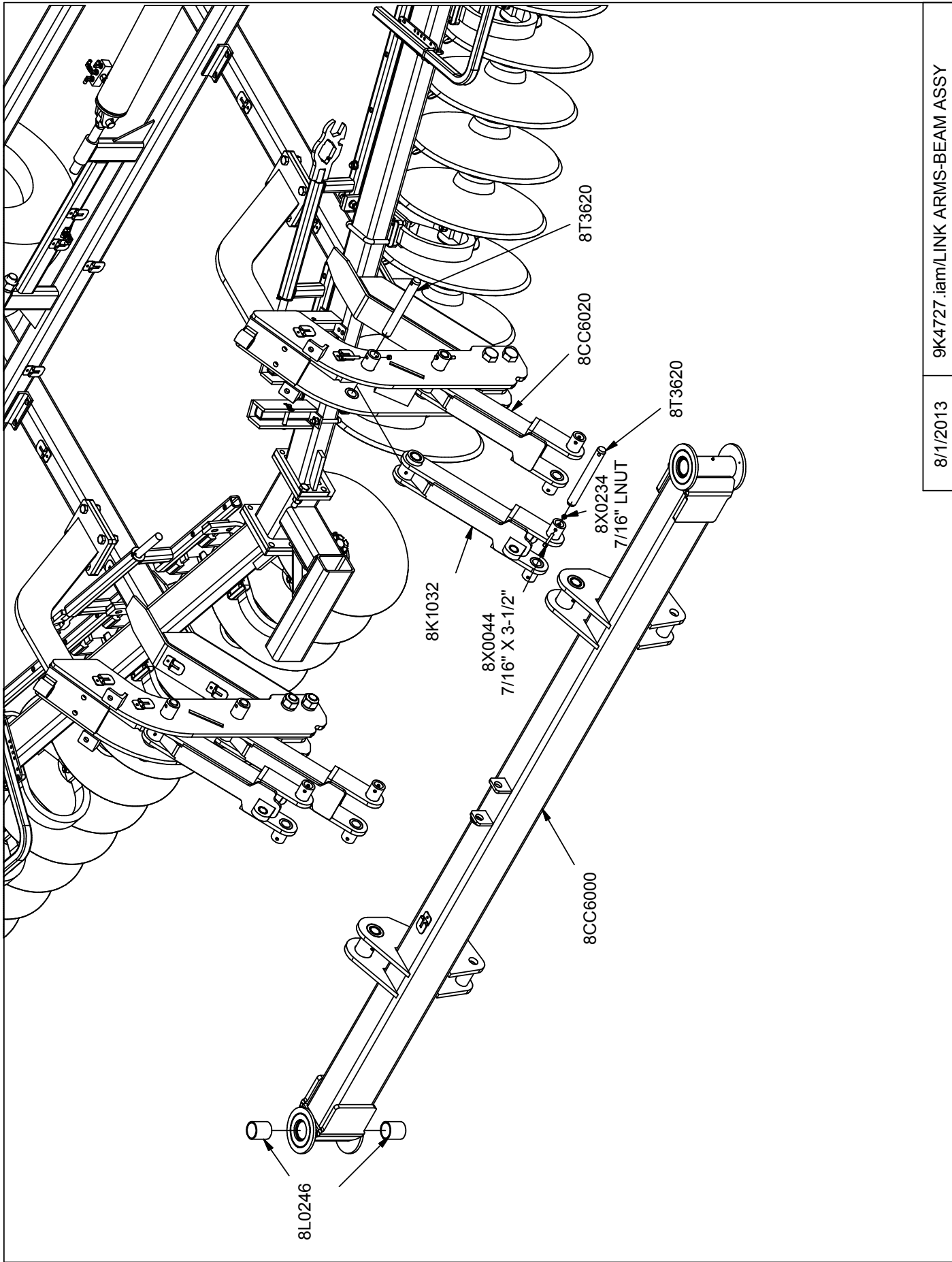
8K1030

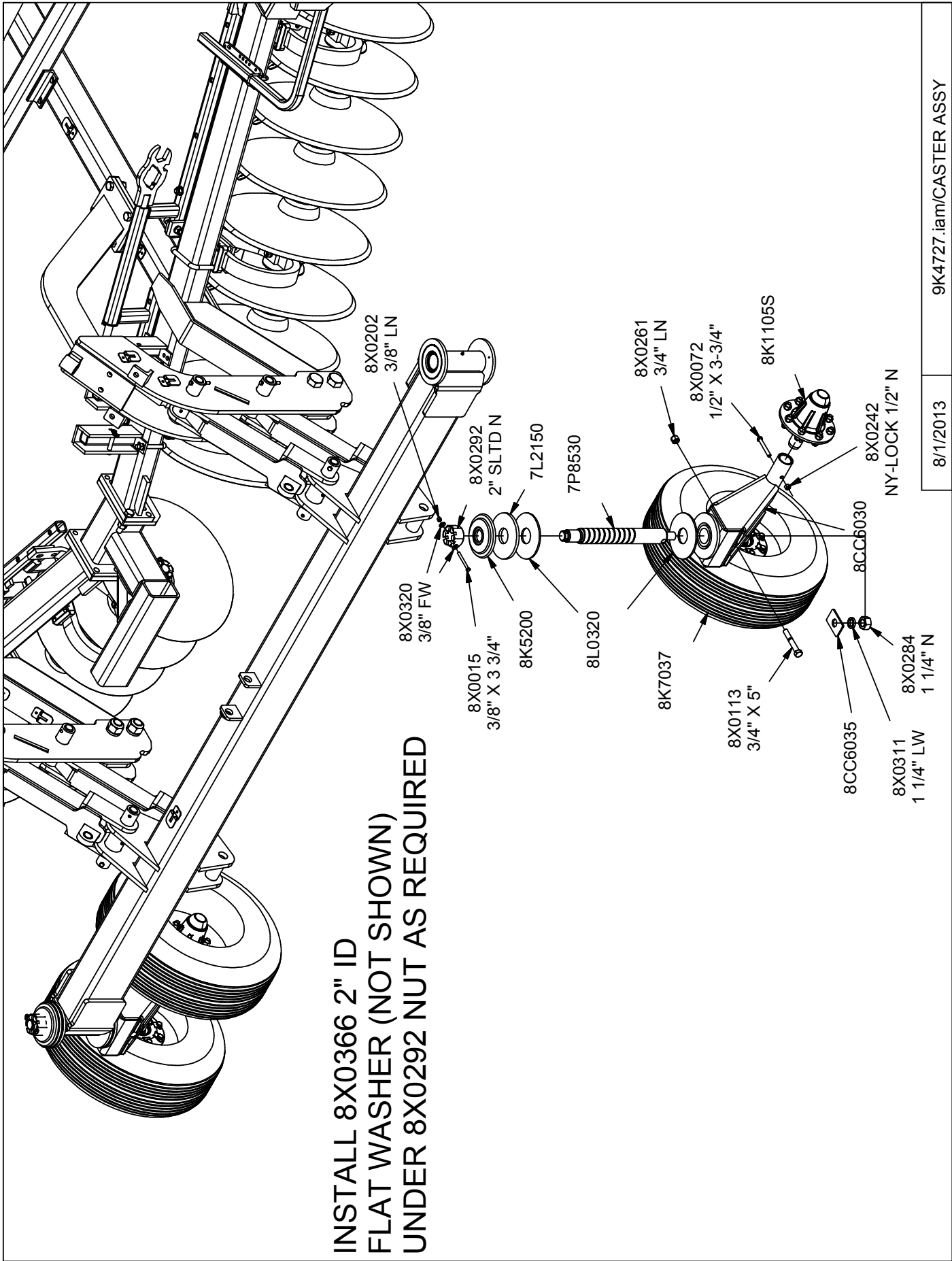
7CC0510

INSTALL HITCH TOWER BRACES (8K1030)

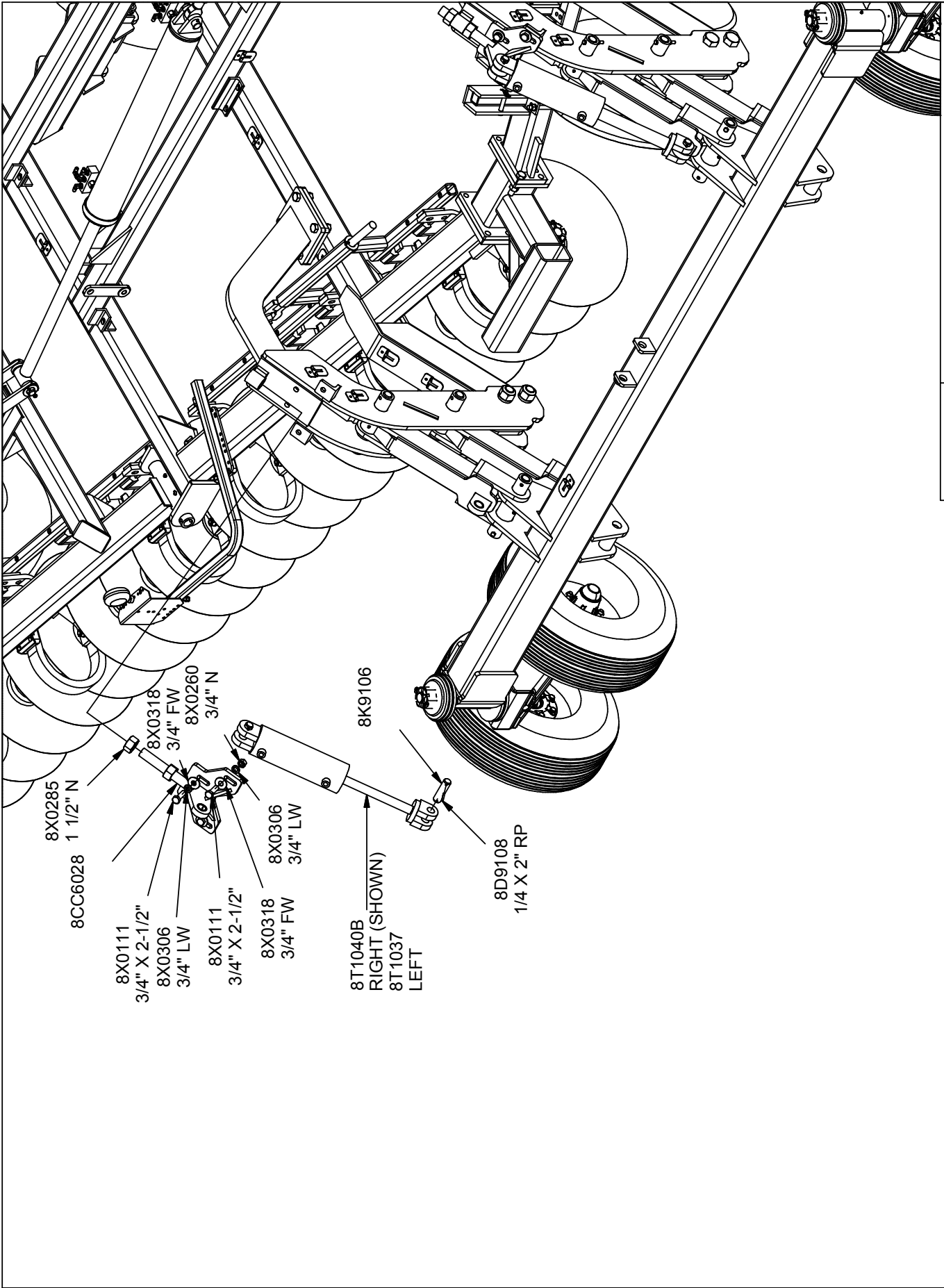
8/1/2013

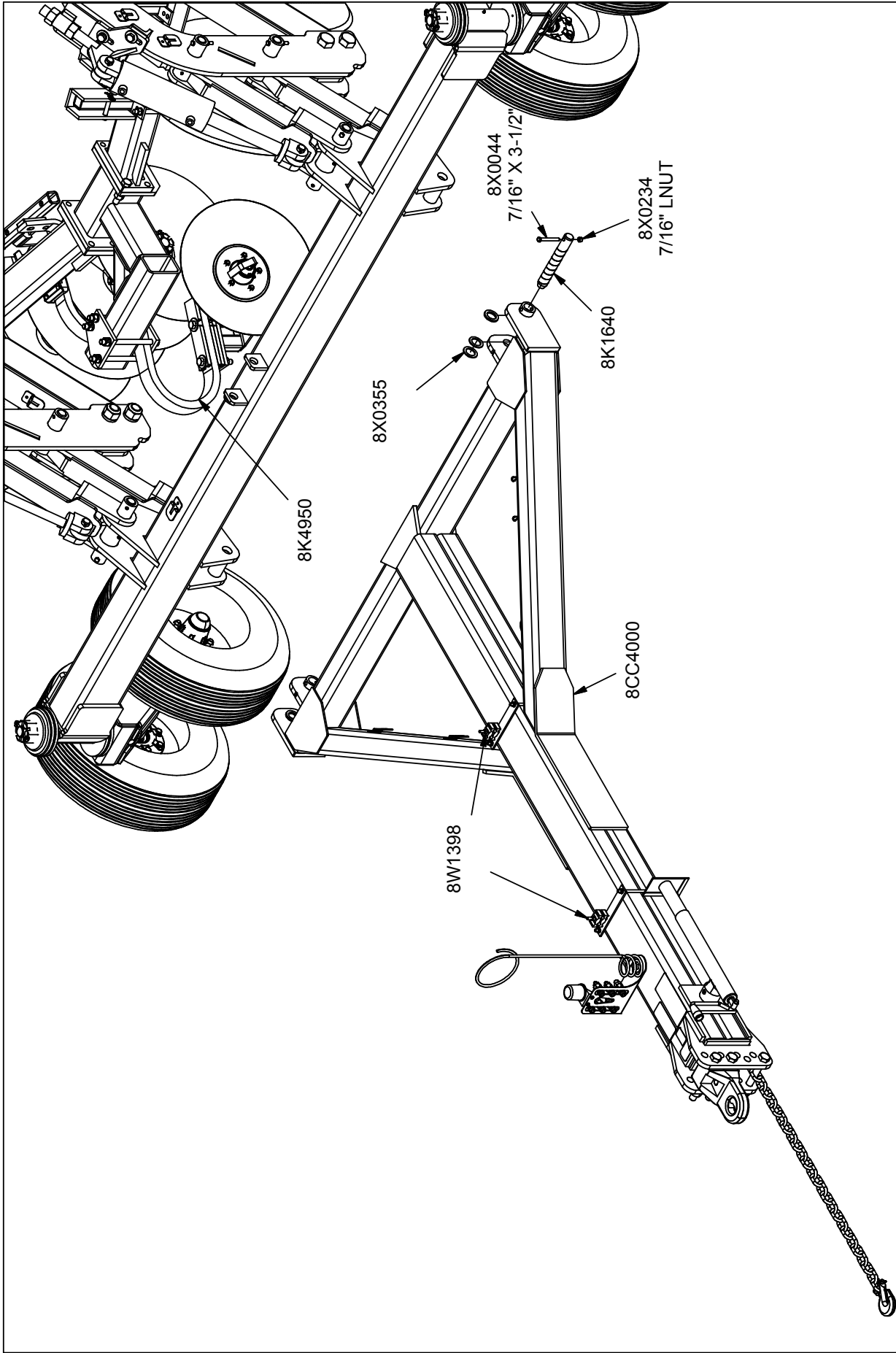
9K4727 .iam/HITCH TWR BRACE ASSY





INSTALL 8X0366 2" ID
 FLAT WASHER (NOT SHOWN)
 UNDER 8X0292 NUT AS REQUIRED

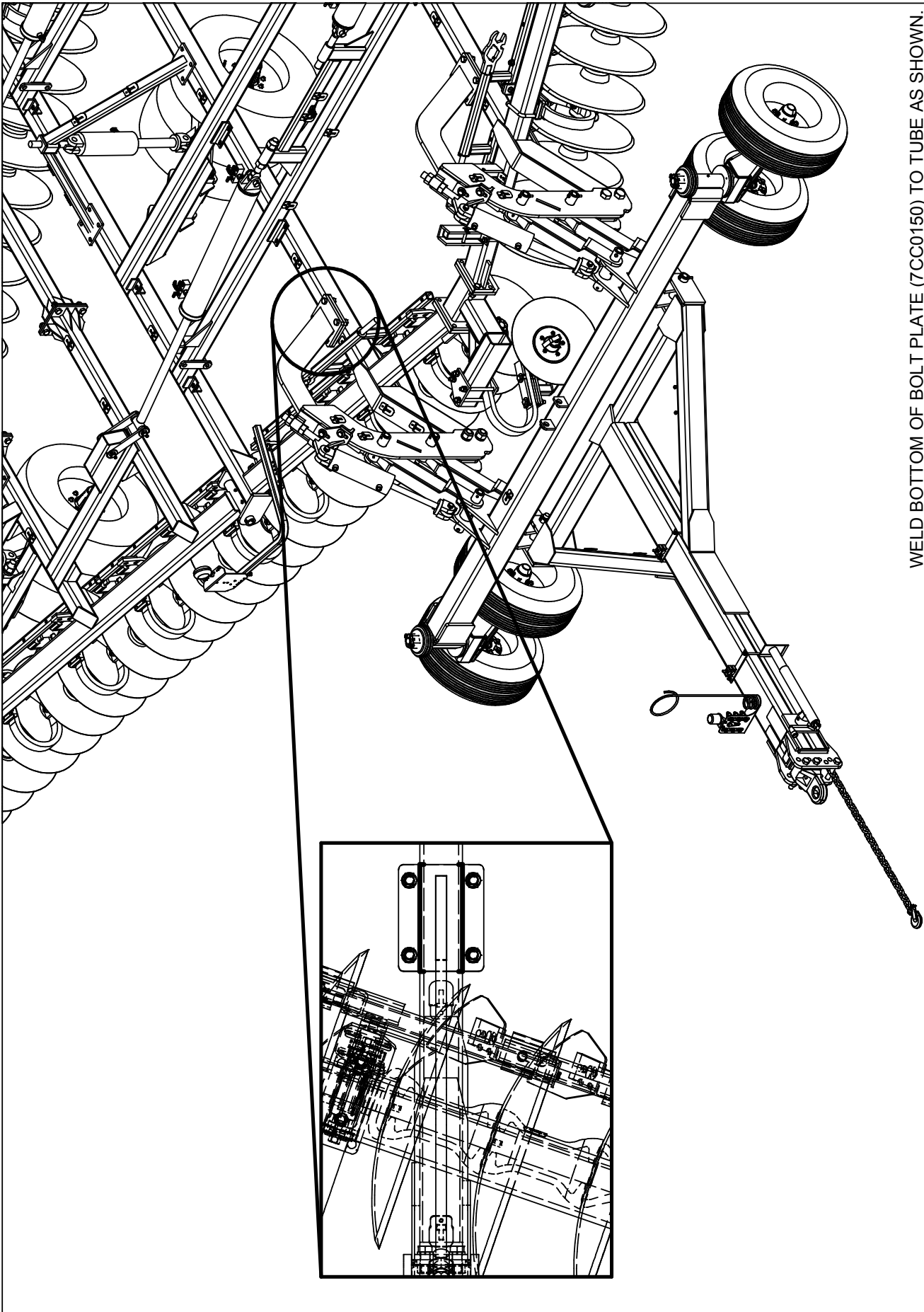




INSTALL HITCH (8CC4000) AND SINGLE DISK (8K4950) AS SHOWN

8/2/2013

9K4727.iam/HITCH INSTALL

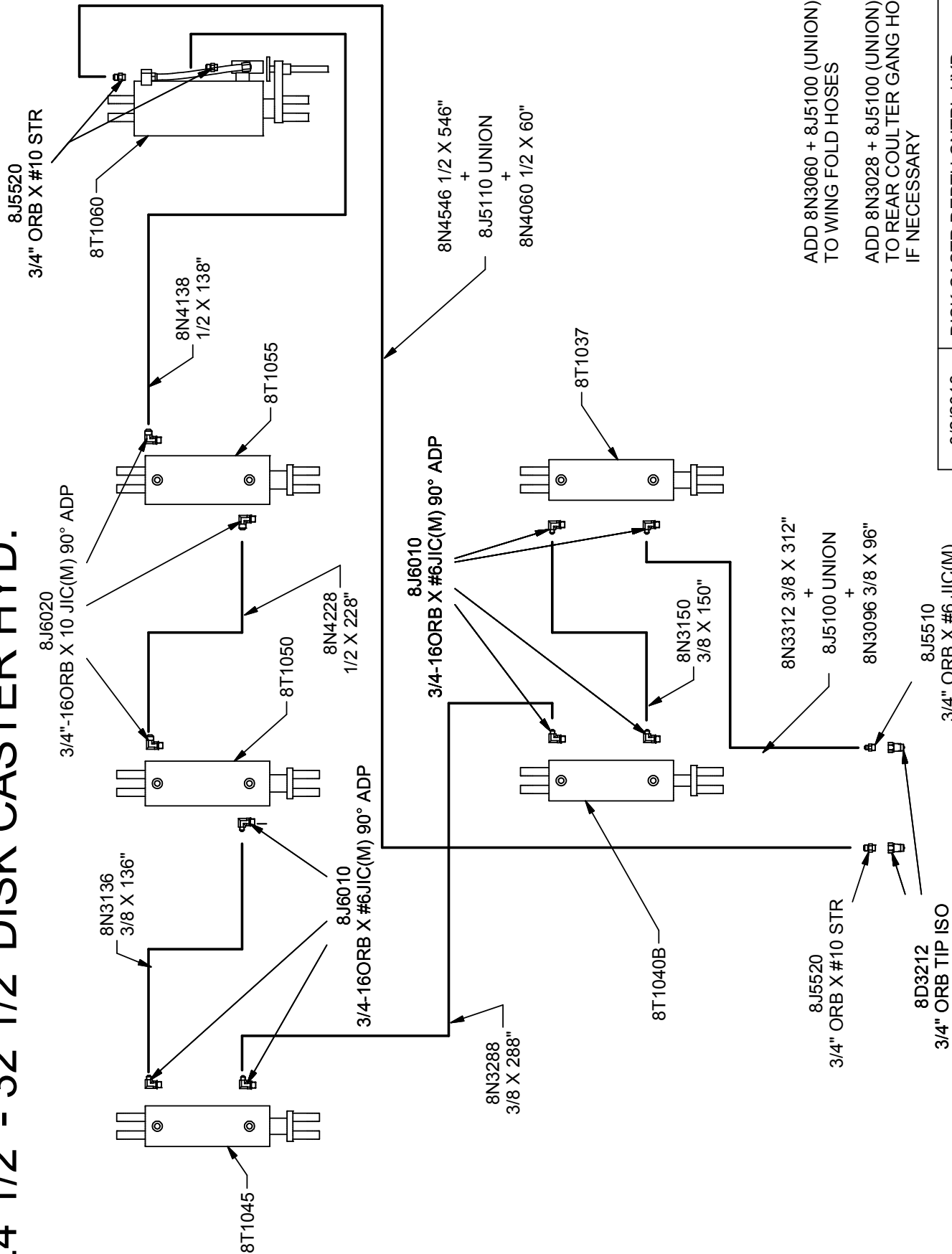


WELD BOTTOM OF BOLT PLATE (7CC0150) TO TUBE AS SHOWN.
BEAD SIZE = 3/4". DO NOT WELD ACROSS FACE OF TUBE.

8/2/2013

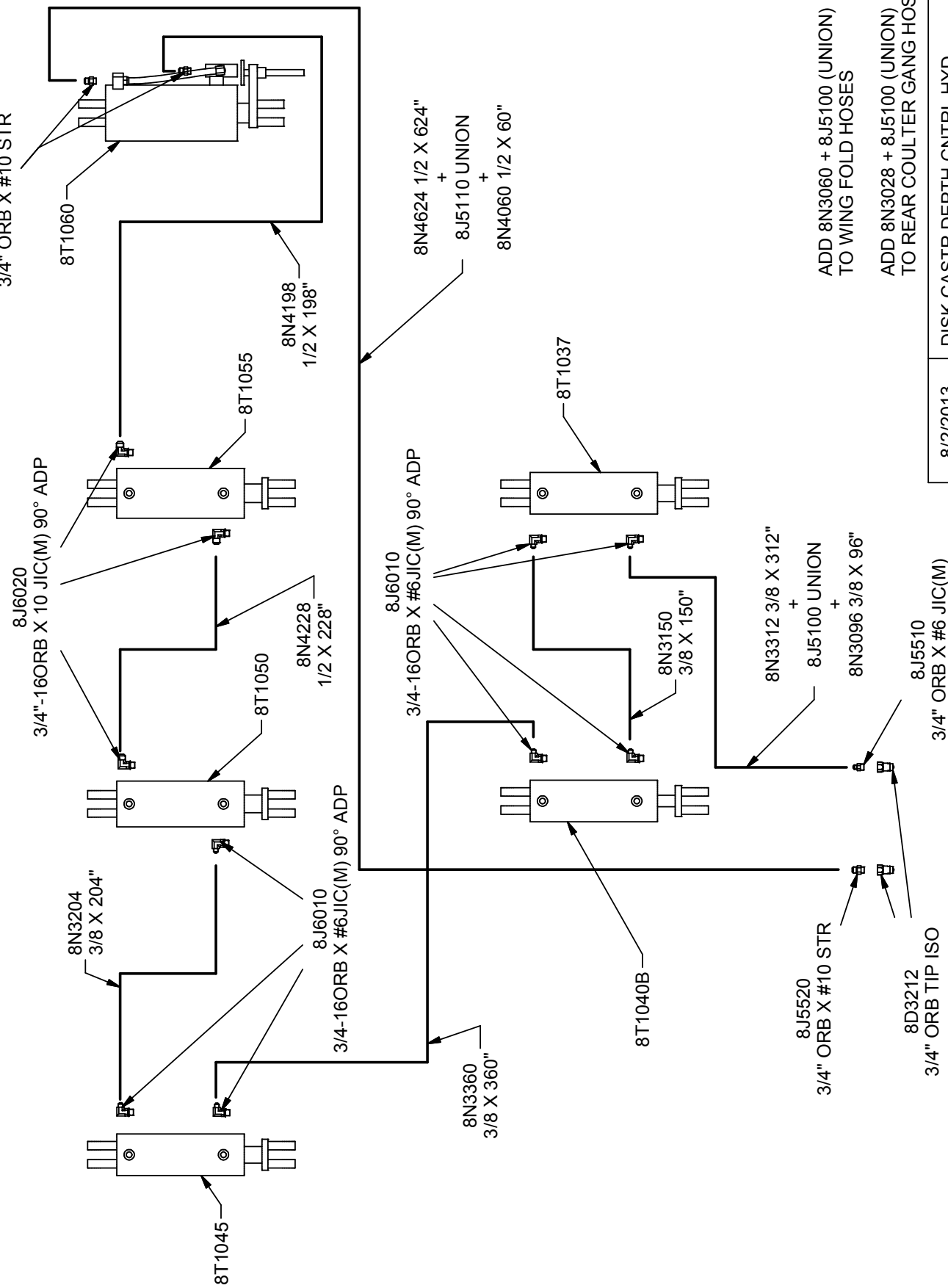
9K4727.iam/BOLT PLATE WELDING

24 1/2' - 32 1/2' DISK CASTER HYD.



8/2/2013 DISK CASTR DEPTH CNTRL HYD

38 1/2' - 47' DISK CASTER HYD.



ADD 8N3060 + 8J5100 (UNION)
TO WING FOLD HOSES

ADD 8N3028 + 8J5100 (UNION)
TO REAR COULTER GANG HOSES

DISK CASTER DEPTH CNTRL HYD

8/2/2013

3/4" ORB X #6 JIC(M)



