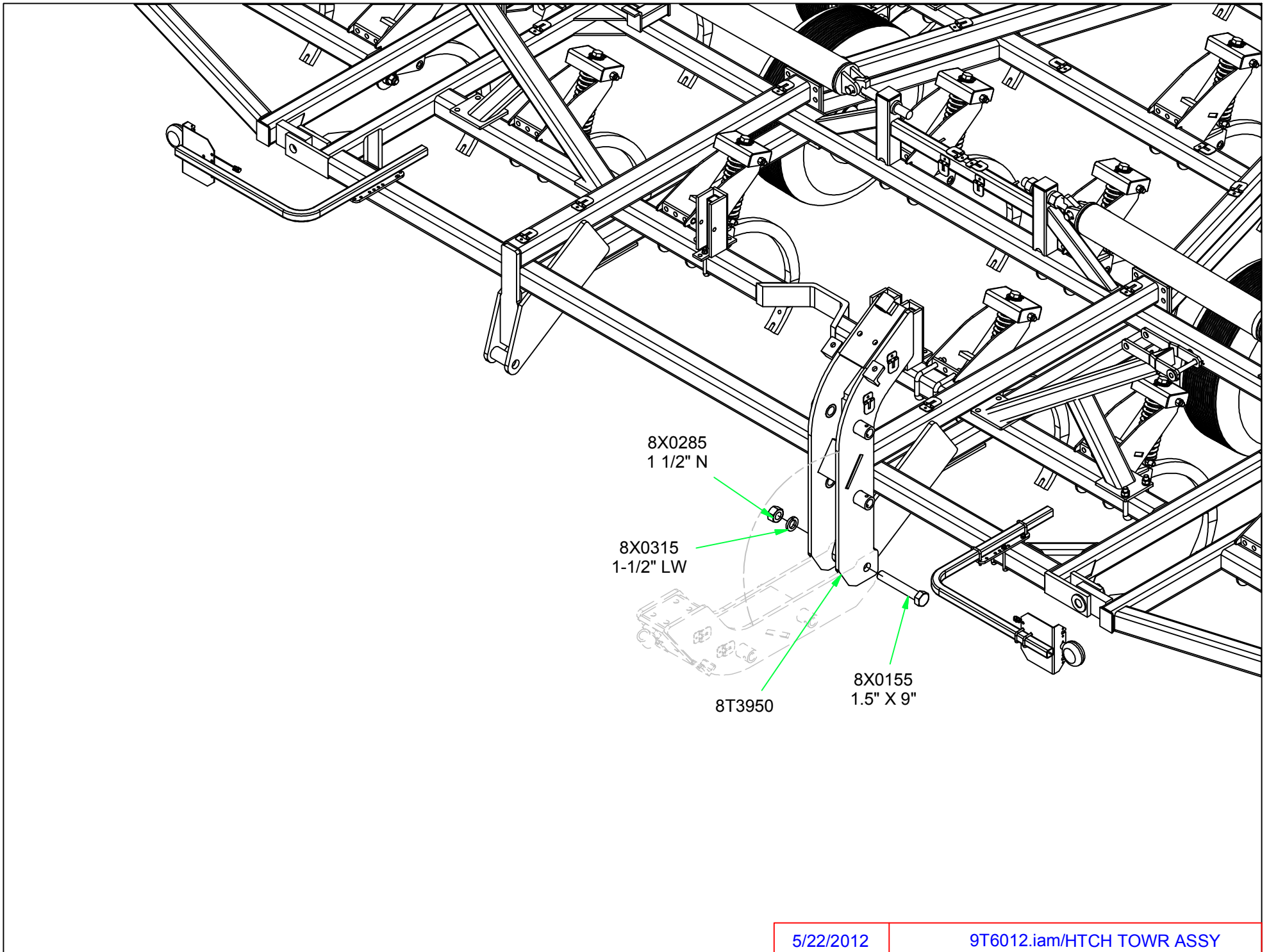
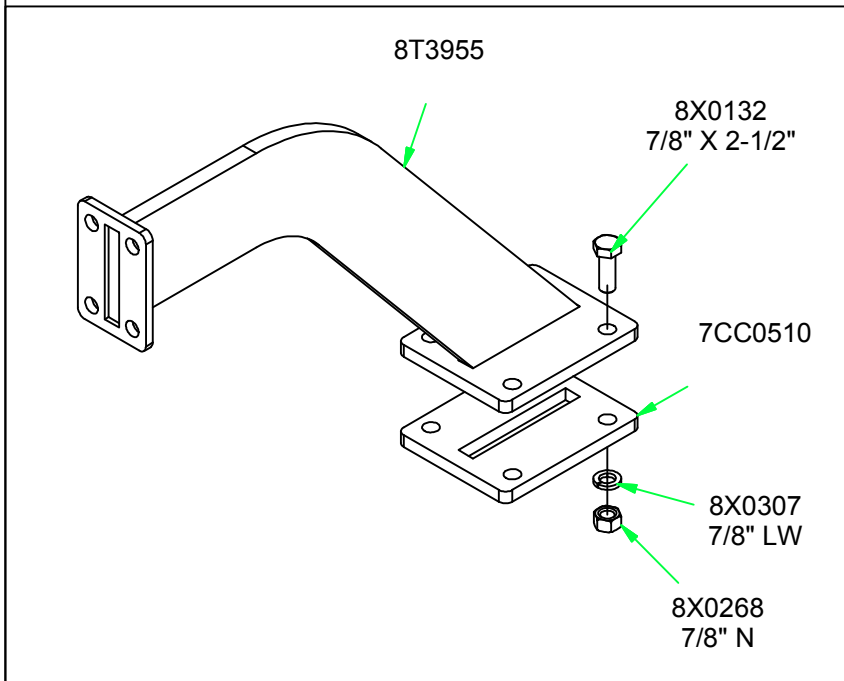
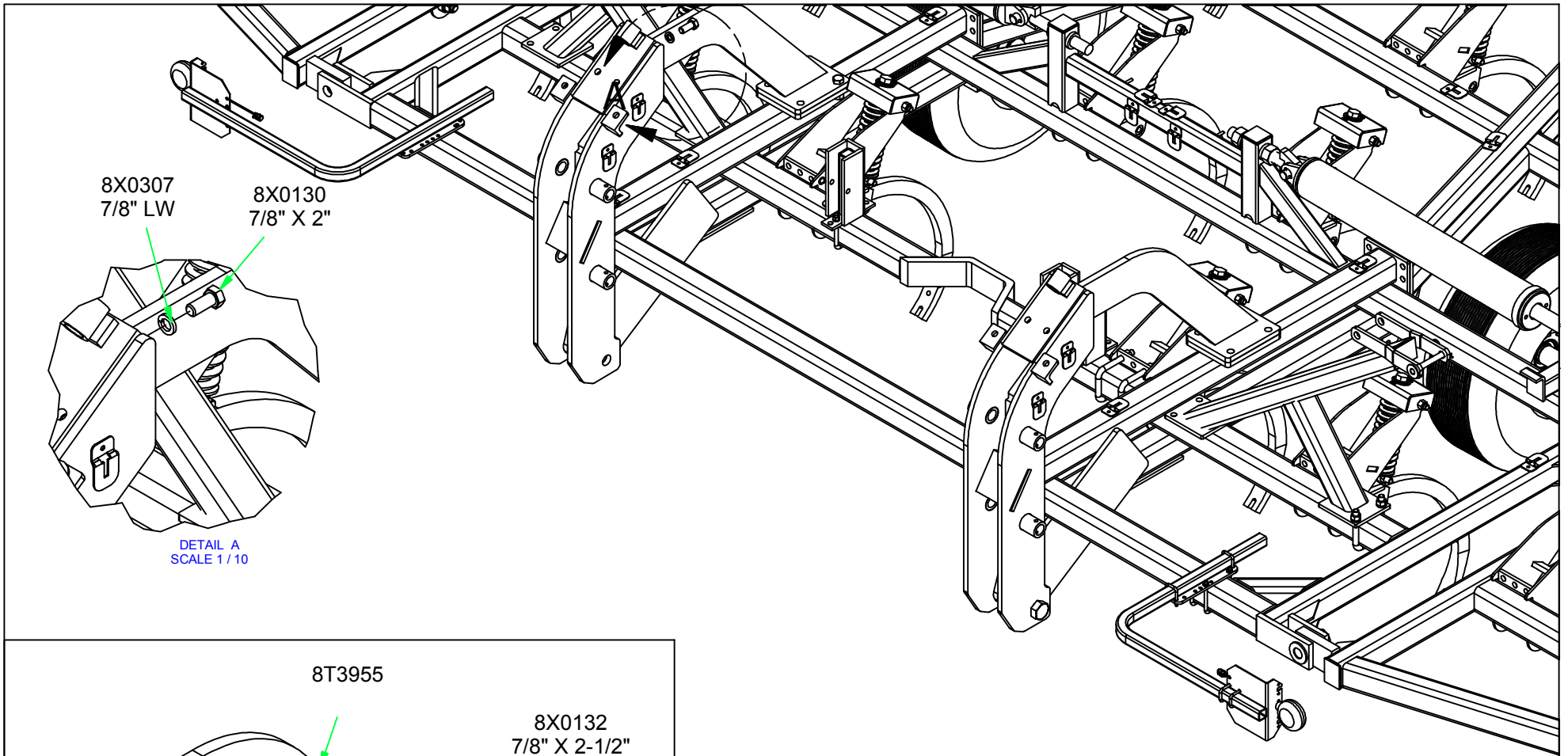
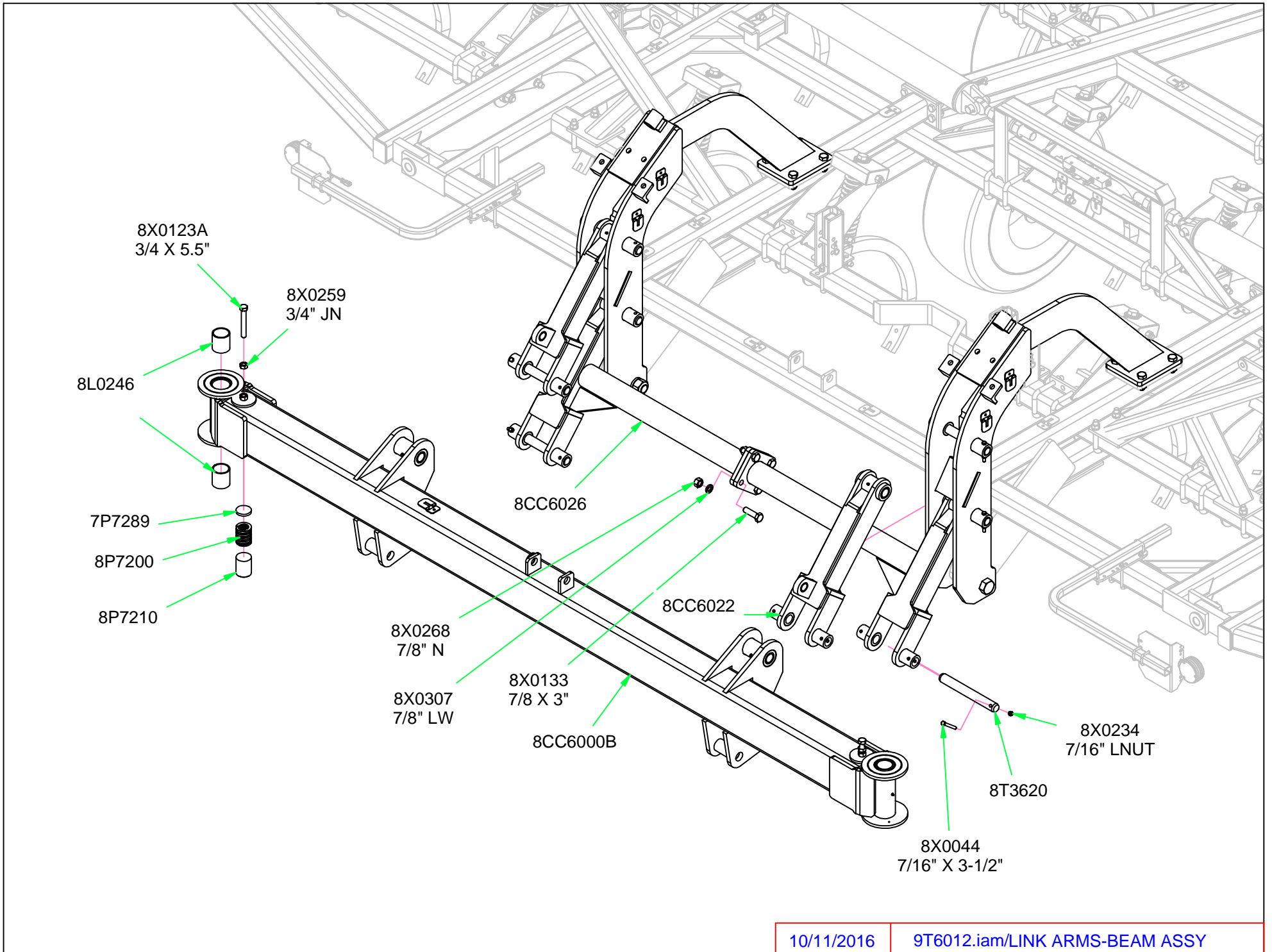
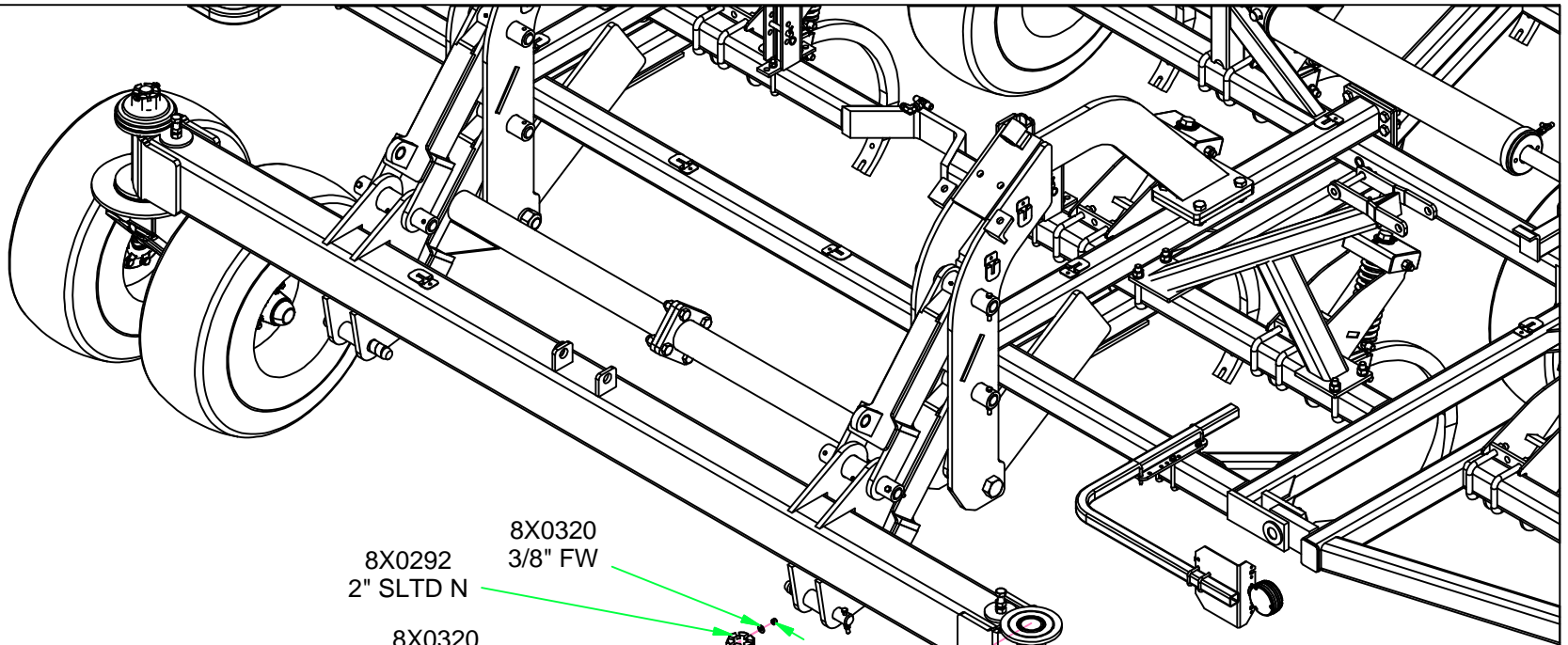


REMOVE HIGHLIGHTED COMPONENTS.
REMOVE WHEEL/TIRE AND HUB FROM
WALKING TANDEM.
THESE PARTS WILL BE RE-USED





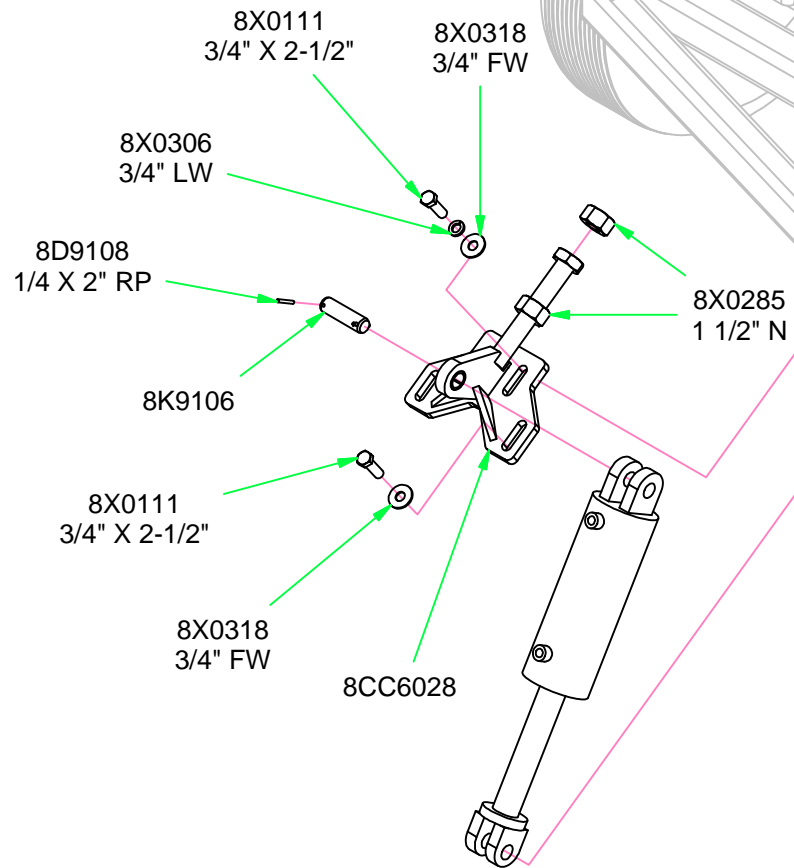




- 8X0292
2" SLTD N
- 8X0320
3/8" FW
- 8X0320
3/8" FW
- 8X0015
3/8" X 3 3/4"
- 8K5200
- 8L0320
- 7P8530
- 8L0320
- 8K7042
- 8X0113
3/4" X 5"
- 8CC6035
- 8X0311
1 1/4" LW
- 8X0284
1 1/4" N
- 8X0320
3/8" FW
- 8X0202
3/8" LN
- 7L2150
- 8X0261
3/4" LN
- 8CC6030B
- 8X0072
1/2" X 3-3/4"
- 8K1105S
- 8X0242
NY-LOCK 1/2" N

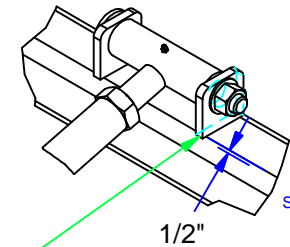
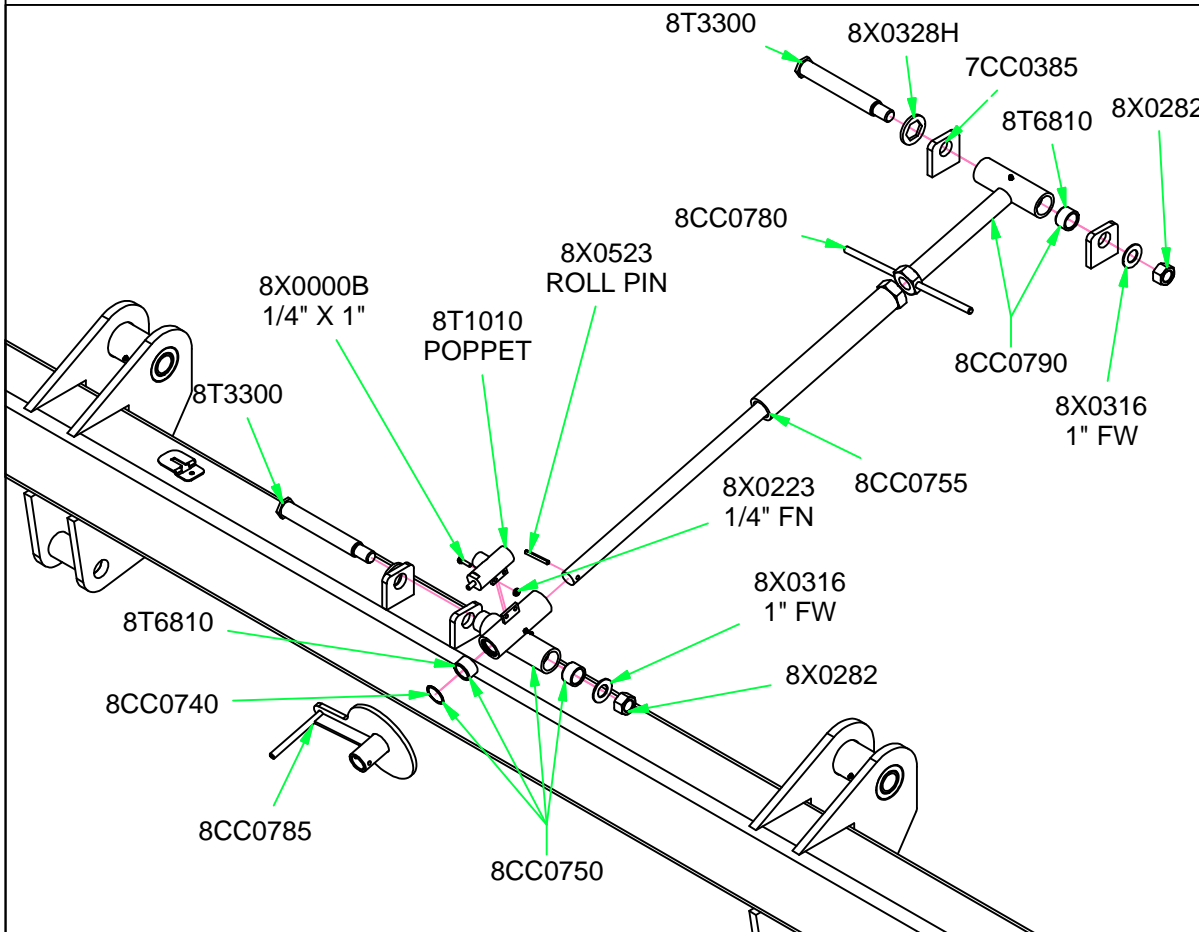
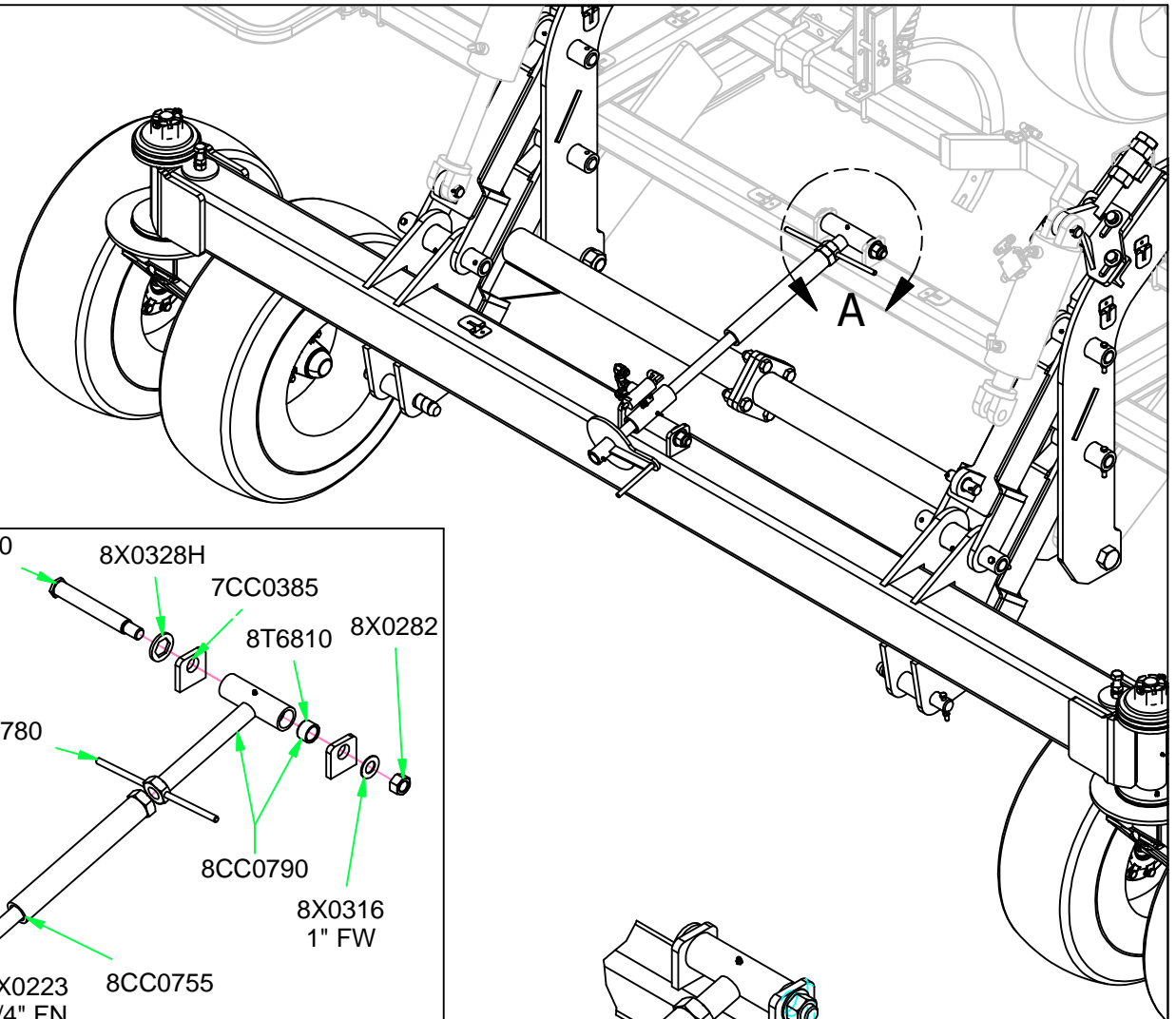
IMPORTANT
 MAINTAIN CASTER WHEEL TOP
 CASTLE NUT TORQUE AT 800
 FT-LB. CHECK AFTER EVERY 20
 HOURS OF OPERATION AND
 IMMEDIATELY IF EXCESSIVE
 TIRE MOVEMENT IS SEEN.

8Z0352

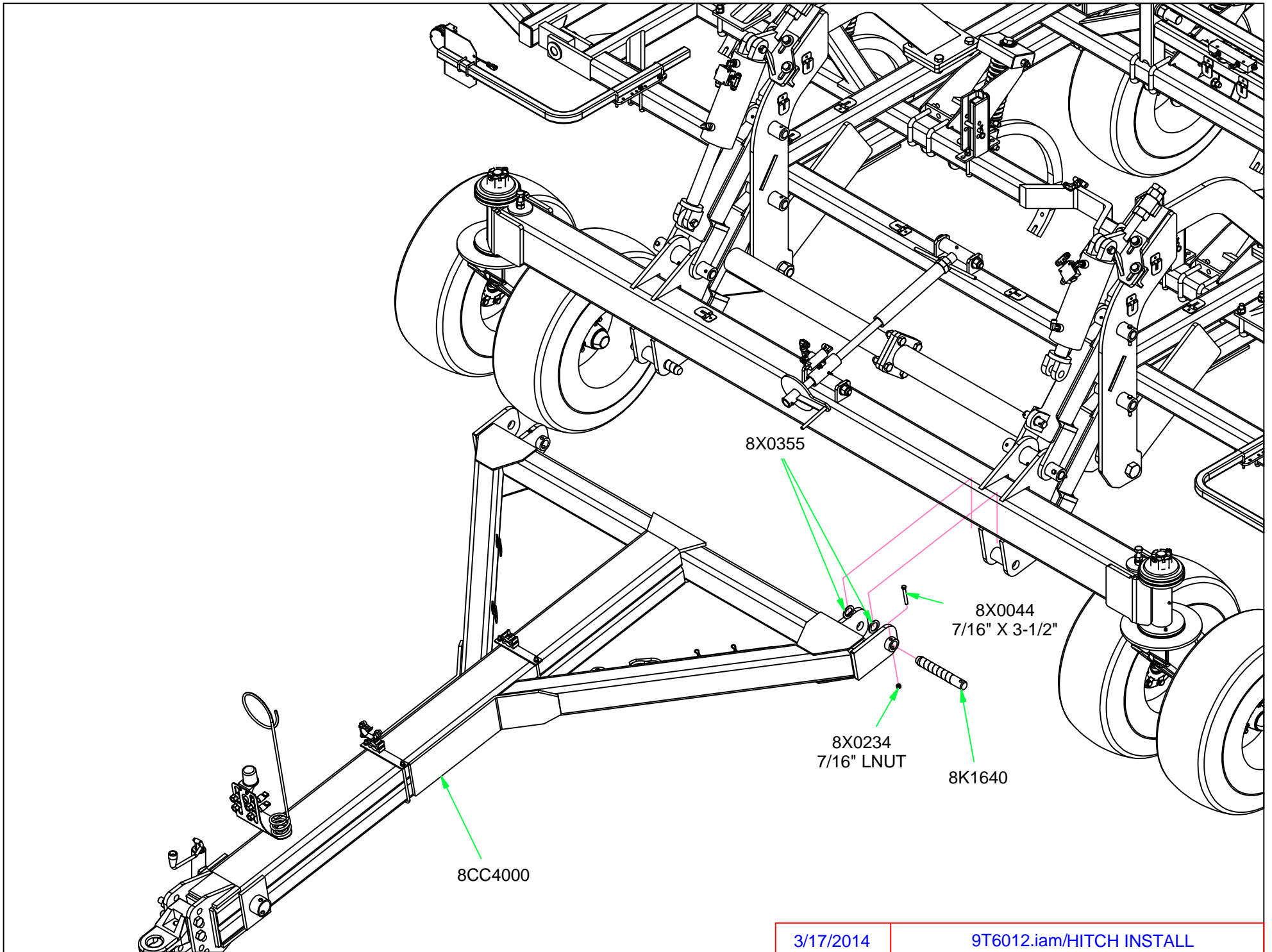


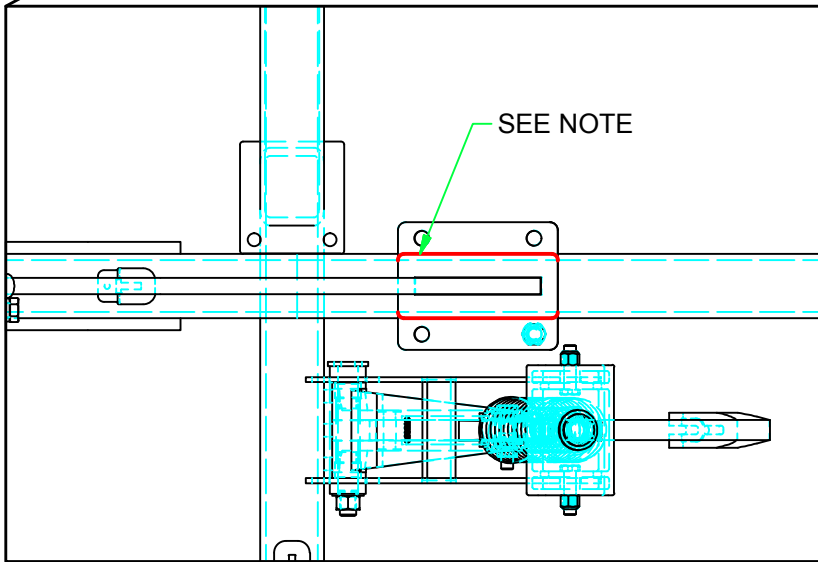
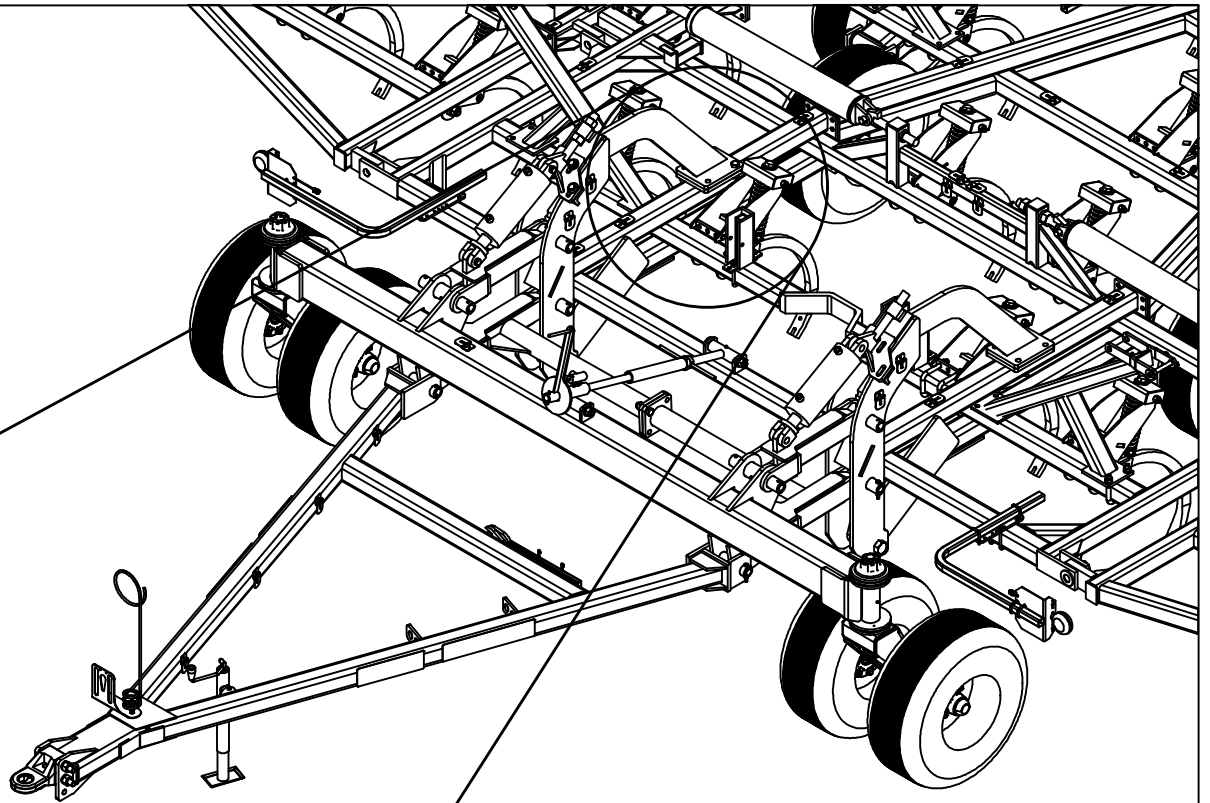
8K9106

**SINGLE POINT DEPTH CONTROL
USED ON 5-SECTION (50' - 60')
CHISEL PLOWS ONLY.**



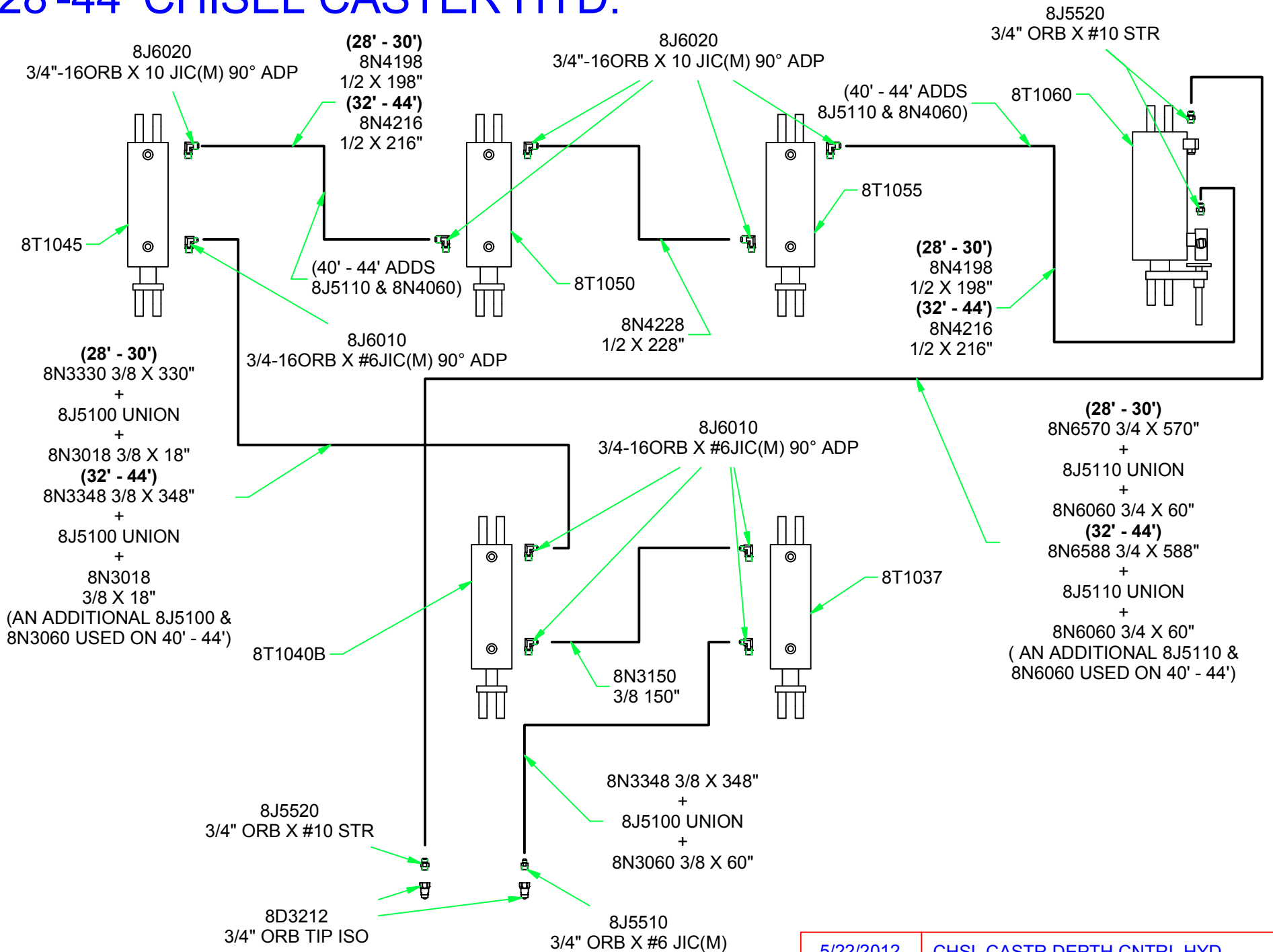
NOTE:
WELD BOTH SIDES OF TAB TO TUBE.
TABS SHOULD BE LOCATED 1/2" BACK
FROM FRONT FACE OF TUBE, AS SHOWN.
BEAD SIZE = 1/4"



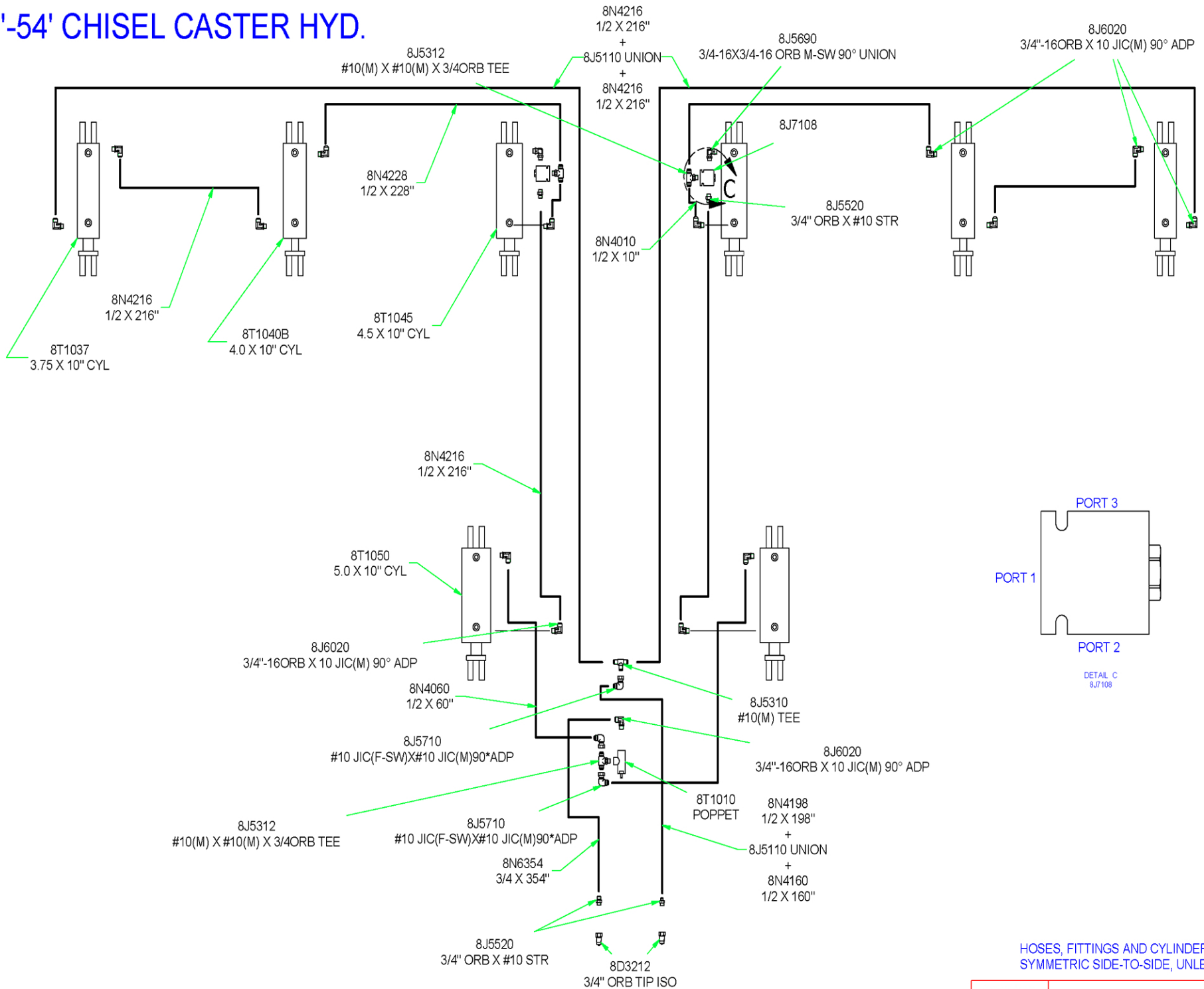


NOTE:
WELD BOTTOM OF BOLT PLATE TO TUBE AS SHOWN.
BEAD SIZE = 3/4". **DO NOT WELD ACROSS FACE OF TUBE.**

28'-44' CHISEL CASTER HYD.

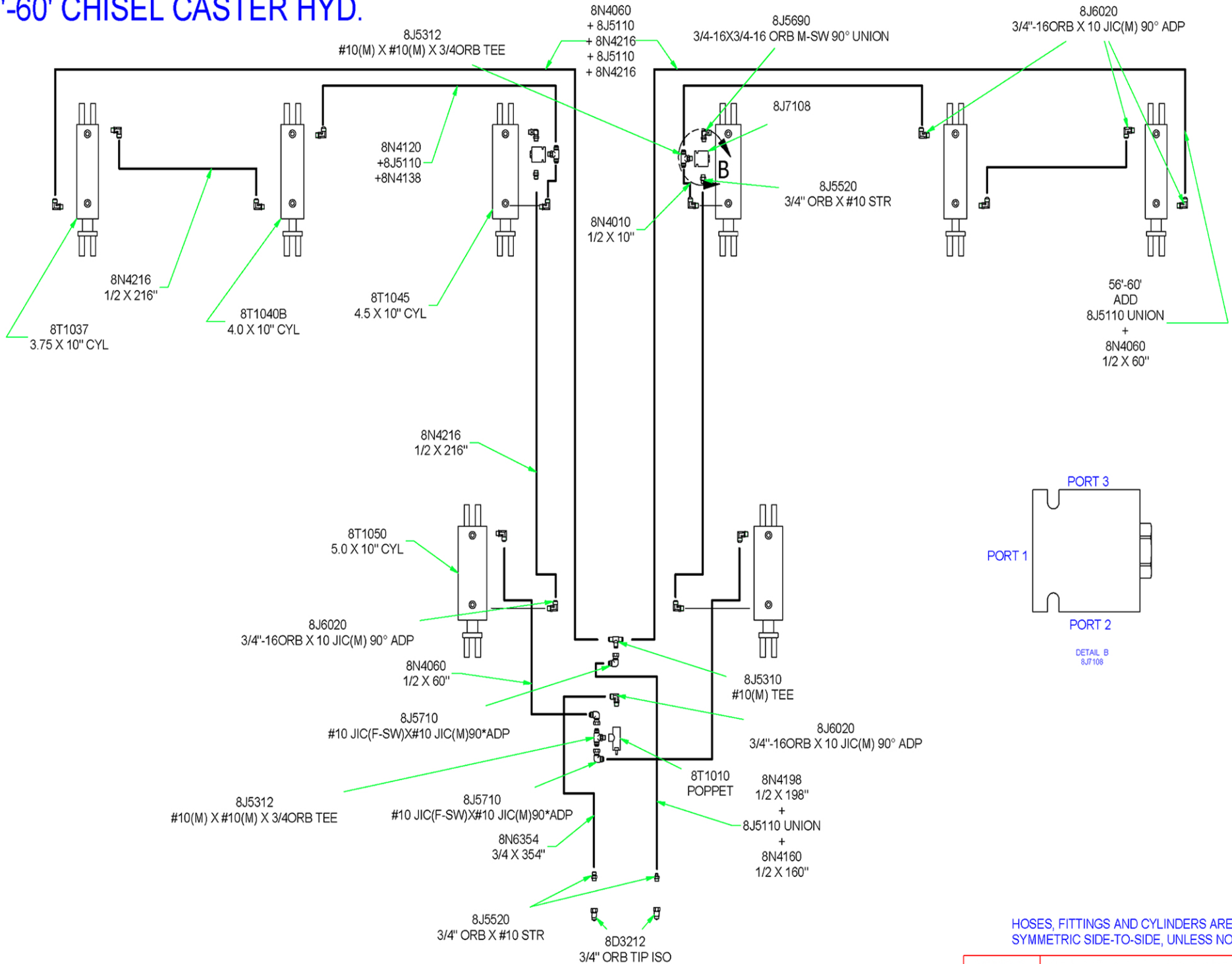


50'-54' CHISEL CASTER HYD.



HOSES, FITTINGS AND CYLINDERS ARE SYMMETRIC SIDE-TO-SIDE, UNLESS NOTED

56'-60' CHISEL CASTER HYD.



HOSES, FITTINGS AND CYLINDERS ARE SYMMETRIC SIDE-TO-SIDE, UNLESS NOTED